



iPhone 4S SIM Card Replacement

Internal prerequisite to remove logic board.

Written By: Walter Galan



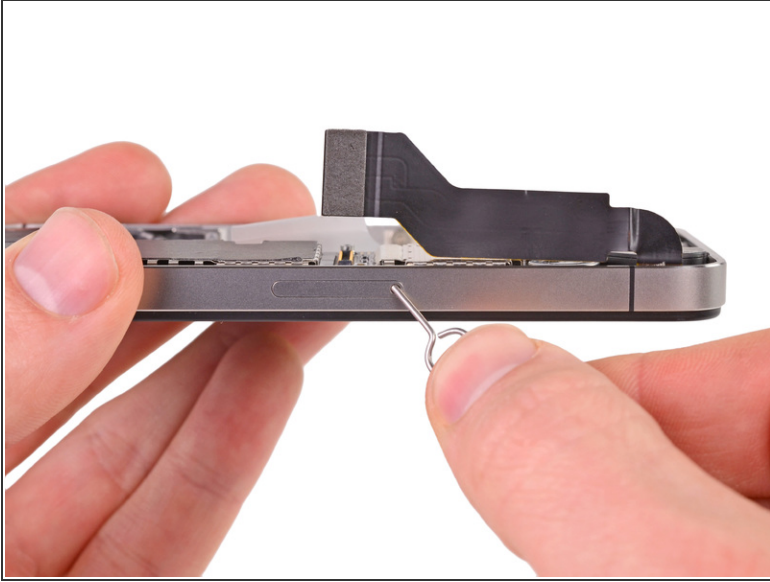
INTRODUCTION

Internal prerequisite to remove logic board.

TOOLS:

- [SIM Card Eject Tool](#) (1)
-

Step 1 — SIM Card



- Use a SIM eject tool or a paperclip to eject the SIM and its tray.

 This may require a significant amount of force.

- Remove the SIM and its tray.

To reassemble your device, follow these instructions in reverse order.

This document was last generated on 2018-04-01 04:59:09 PM.