



RCA Small Wonders Camcorder CC176

Speaker Replacement

Step by step instructions directing the user on how to remove and replace the speaker for an RCA Small Wonders Camcorder cc176.

Written By: Allison Baudoin



This document was generated on 2019-09-22 05:04:30 AM (MST).

INTRODUCTION

RCA Small Wonders Camcorder cc176 was manufactured in May 1993. Use this guide to remove and replace the speaker on this device.

TOOLS:

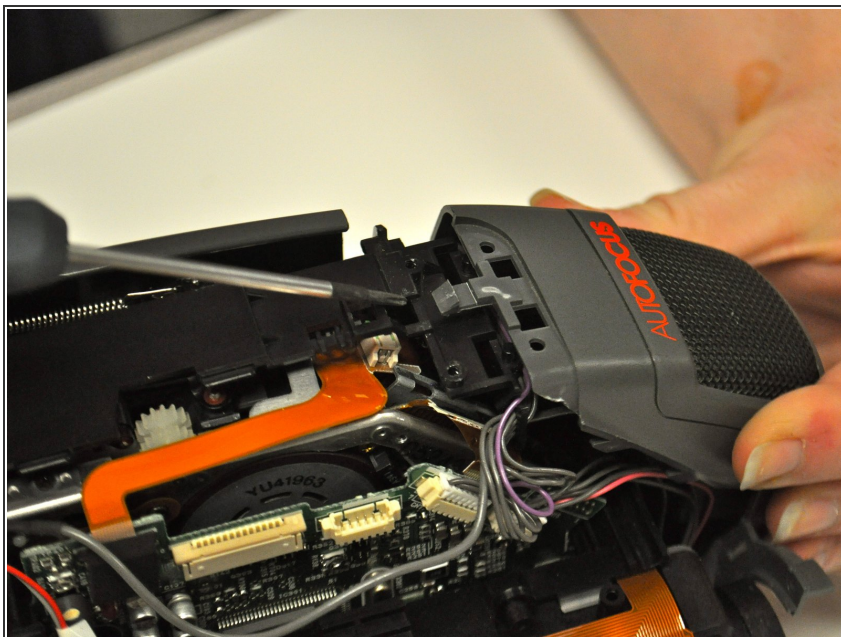
- [Essential Electronics Toolkit](#) (1)
-

Step 1 — Speaker



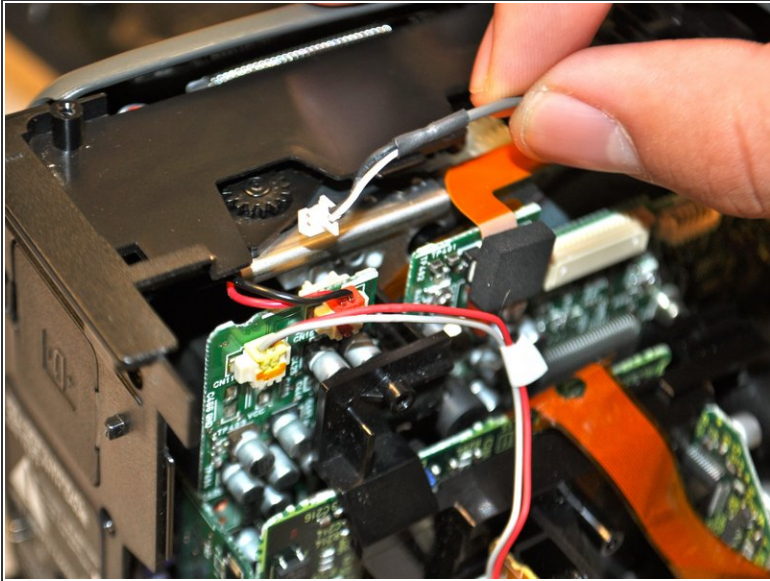
- Remove the small black screws along the edges of the control panel on the top of the device.
- Pry off the top control panel using the plastic wedge tool.
- Remove the screw from the front, gray panel located beneath the "Scene Select AE" label.
- Remove the two small black screws on the top of the front, gray panel of the device, above the red AUTOFOCUS letters.

Step 2



- Turn the device over and remove the two screws securing the front panel of the device.
- Remove the screw securing the primary viewfinder, along the front of the camera.
- Using a flat plastic tool, pry the entire front panel away from the device.

Step 3



- Gently unplug the grey cord, located underneath the panel, disconnecting the speaker from the inner component of the device.
- Remove the speaker from the device.

To reassemble your device, follow these instructions in reverse order.