



Microsoft Surface Pro 2 LCD Display Replacement

First step in disassembly of the Surface Pro 2 and display replacement guide.

Written By: Mathew B



INTRODUCTION

If your screen is unresponsive to touch, cracked, or flickering than placing your screen may solve these problems.

TOOLS:

- [iFixit Opening Tools](#) (1)
- [Suction Handle](#) (1)
- [Heat Gun](#) (1)
- [Spudger](#) (1)

PARTS:

- [Surface Pro/Pro 2 Screen](#) (1)


Step 1 — LCD Display




 To avoid electrical shocks, unplug and turn off your Surface Pro 2 before proceeding.

Step 2



 Avoid any skin or eye contact with the heating pad or heating gun because they may cause bodily harm.

- Using a heating pad or heating gun, heat the edges of the screen to soften the glue. This area extends roughly one inch from the edge of the device.

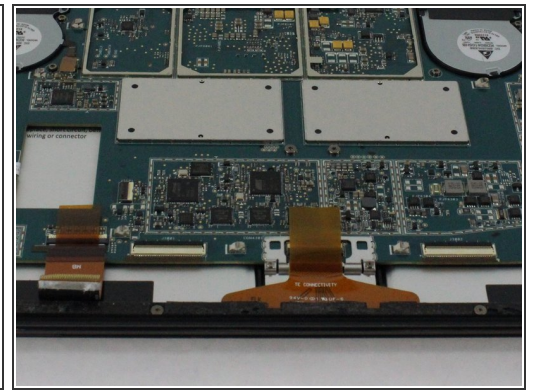
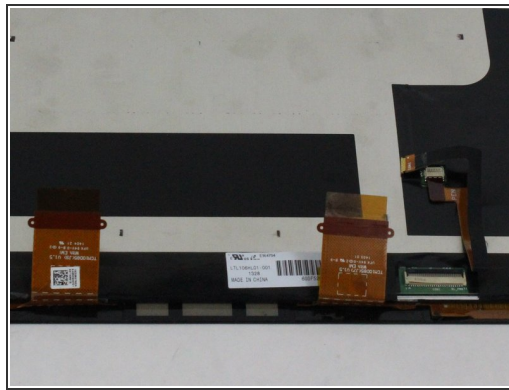
 The glue is under the darker border of the device display.

Step 3



- Using a plastic opening tool and a suction cup as needed for leverage, gently insert one edge of the opening tool under the corner of the screen.
- ⓘ If the tool does not easily slide under the screen, return to heating before proceeding.
- Slowly work the tool around the entire edge of the screen.

Step 4



- Detach the orange cables that connect the screen to the motherboard by pulling on the small tabs. Using the nylon spudger, release these cables.
- ⓘ Please note the third small connector in red.
- Allow the glue to cool before letting it come into contact with any other surface.

To reassemble your device, follow these instructions in reverse order.