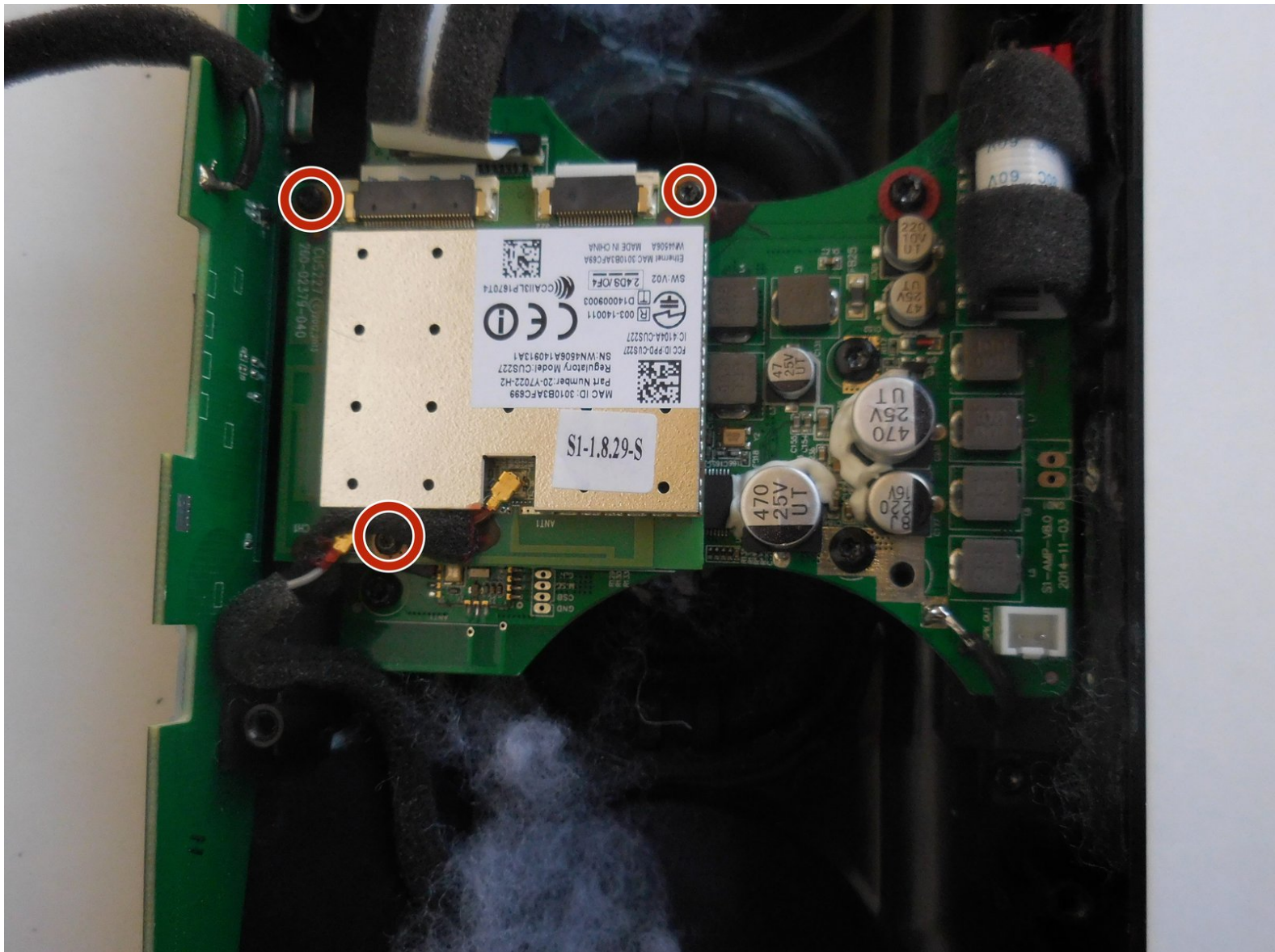




# Monster SoundStage S1 Mini Circuit Board Replacement

This guide will show how to remove the circuit board in the Monster Soundstage S1 Mini

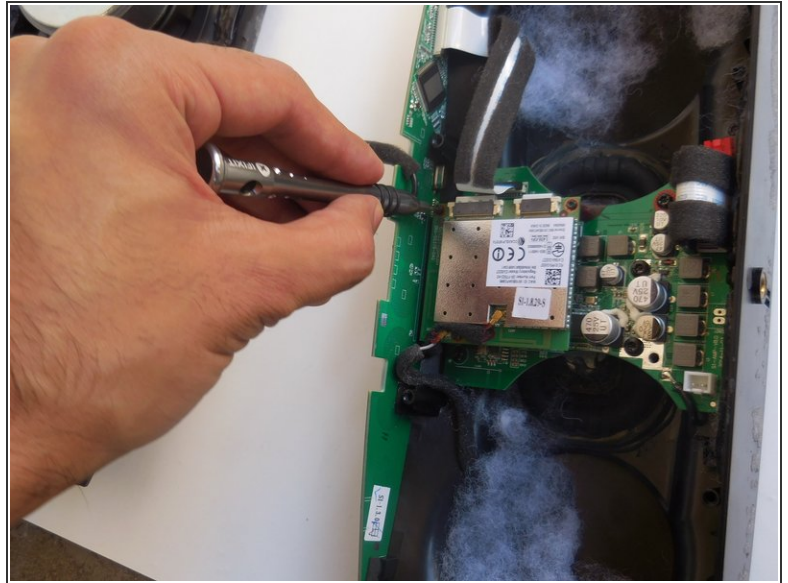
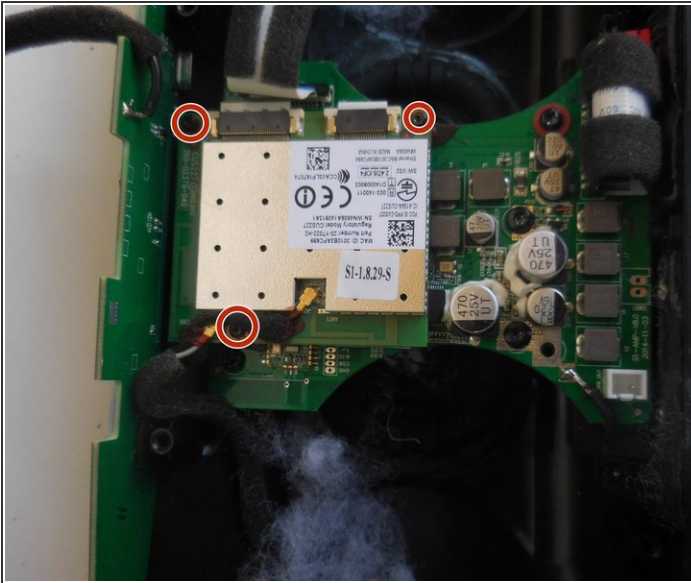
Written By: Heather Carrillo



 **TOOLS:**

- T10 Torx Security Bit Screwdriver (1)
  - Soldering Iron (1)
-

## Step 1 — Circuit Board



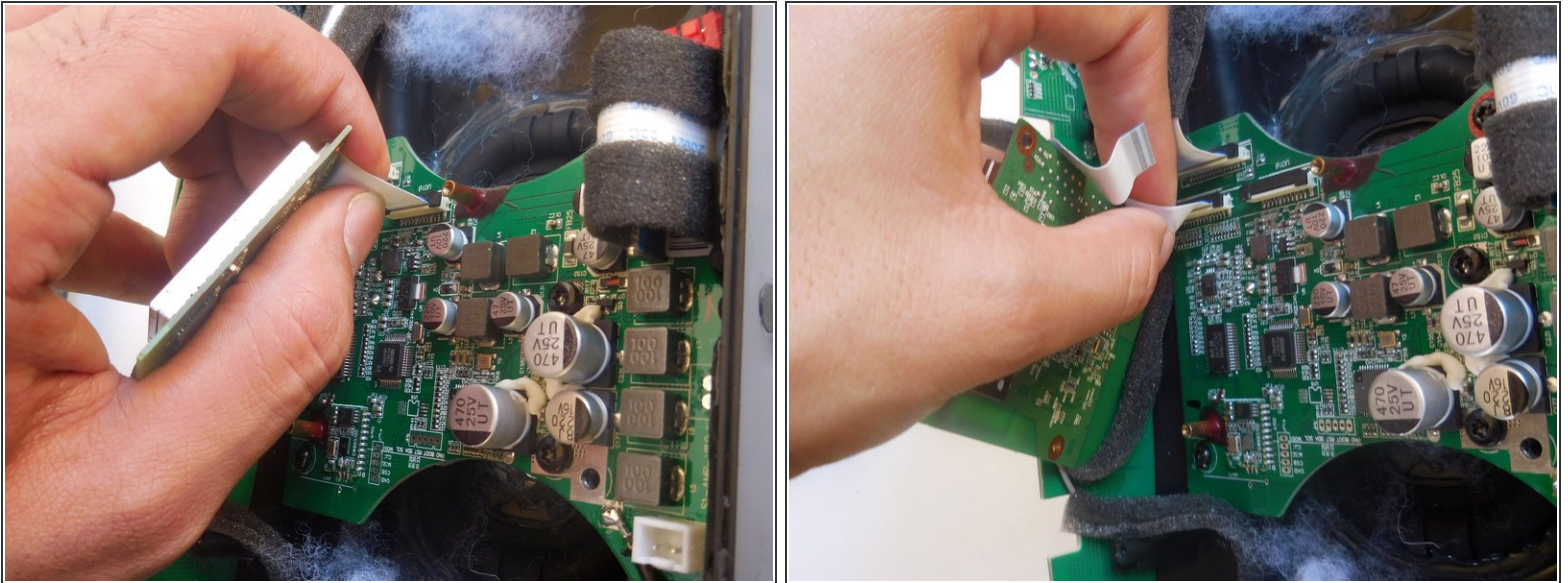
- Remove one 7 mm Torx security screw from the top left corner and two 5 mm Torx security screws from the bottom left and top right corners of the circuit board.

## Step 2



- Solder the two wires connecting the circuit board to the motherboard.

### Step 3



- Remove the two circuit wires by gently tugging on them.

To reassemble your device, follow these instructions in reverse order.