



Monster SoundStage S1 Mini Metal Screen Replacement

Written By: Akshar Patel



 **TOOLS:**

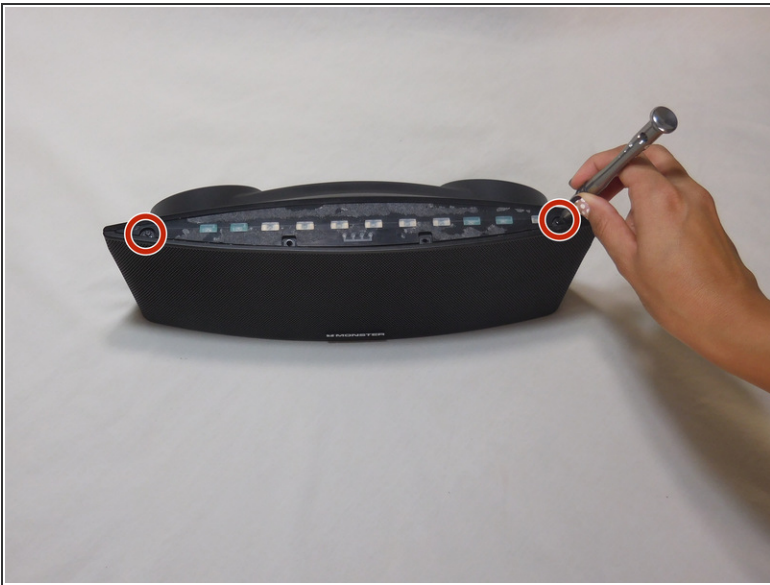
- [T10 Torx Security Bit Screwdriver](#) (1)
 - [T6 Torx Screwdriver](#) (1)
-

Step 1 — Metal Fence



- Start off by unpeeling the black display cover over the sensor board.
- Do not worry, the display board will re-stick when reassembling.

Step 2



- Unscrew the two 3mm Torx Security #6 screws on the edge of the device.
- Unscrew the two 5mm Torx Security #10 in the middle of the device.

Step 3



- Lay the device on its back and unpeel the silicone base.
- Unscrew the four 5mm Torx Security #10 at base.

Step 4



- Gently remove the metal screen.

To reassemble your device, follow these instructions in reverse order.

This document was last generated on 2017-08-09 05:49:16 PM.