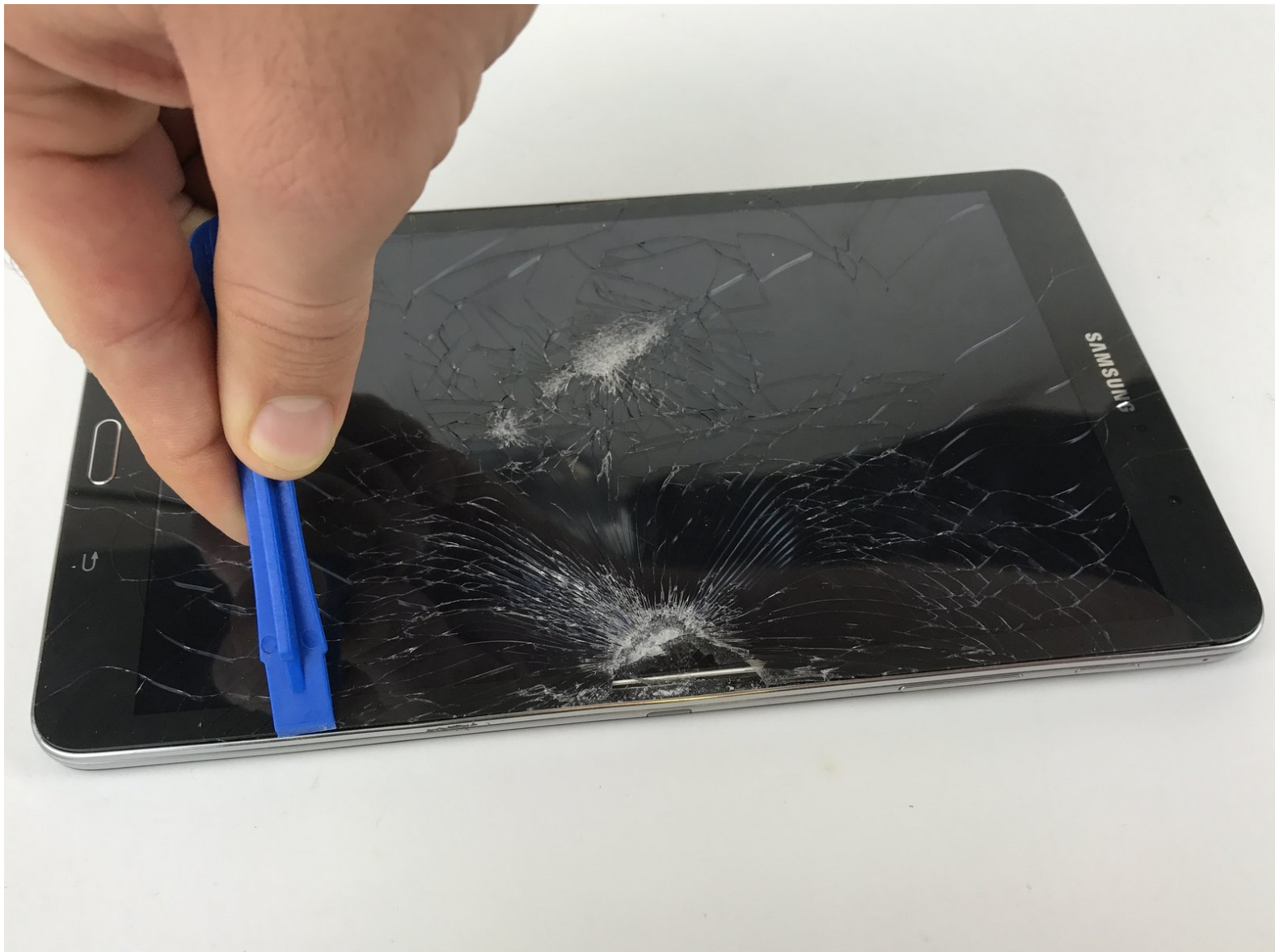




# Samsung Galaxy Tab Pro 8.4 Battery Replacement

This guide is how to remove and replace the battery in the Samsung Galaxy Tab 8.4.

Written By: Jonathan Romine



## INTRODUCTION

This guide will show you how to take off the back panel of the device and take out and replace the battery.

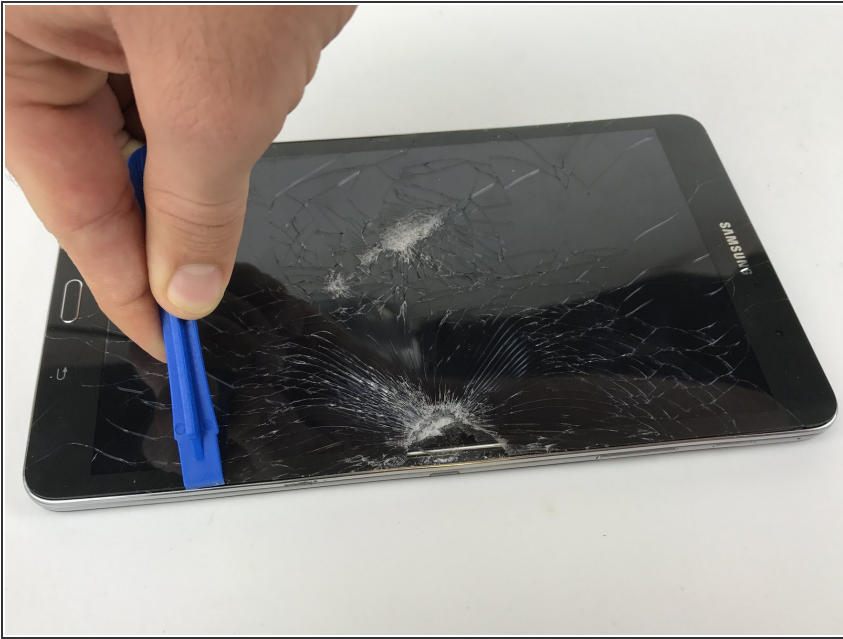
### TOOLS:

- [iFixit Opening Tools](#) (1)
- [Phillips #000 Screwdriver](#) (1)

### PARTS:

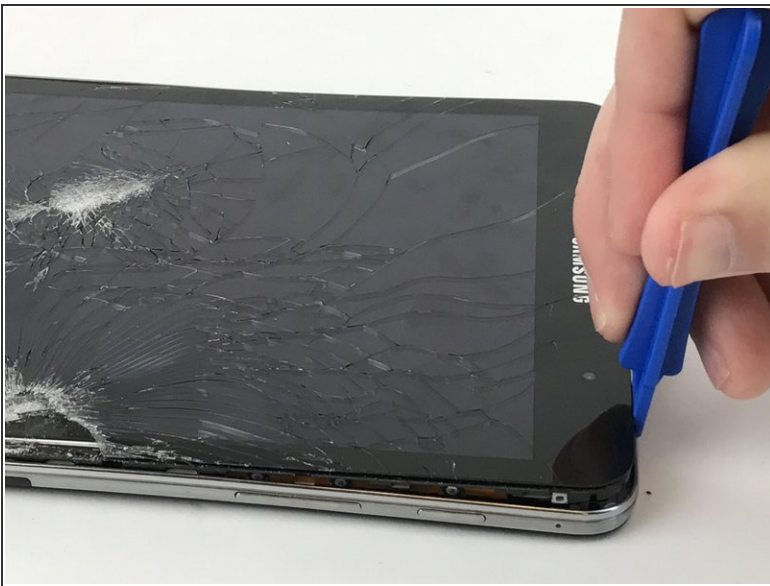
- [Galaxy Tab Pro 8.4 Battery](#) (1)
- [Galaxy Tab Pro 8.4 Rear Panel](#) (1)

## Step 1 — Battery



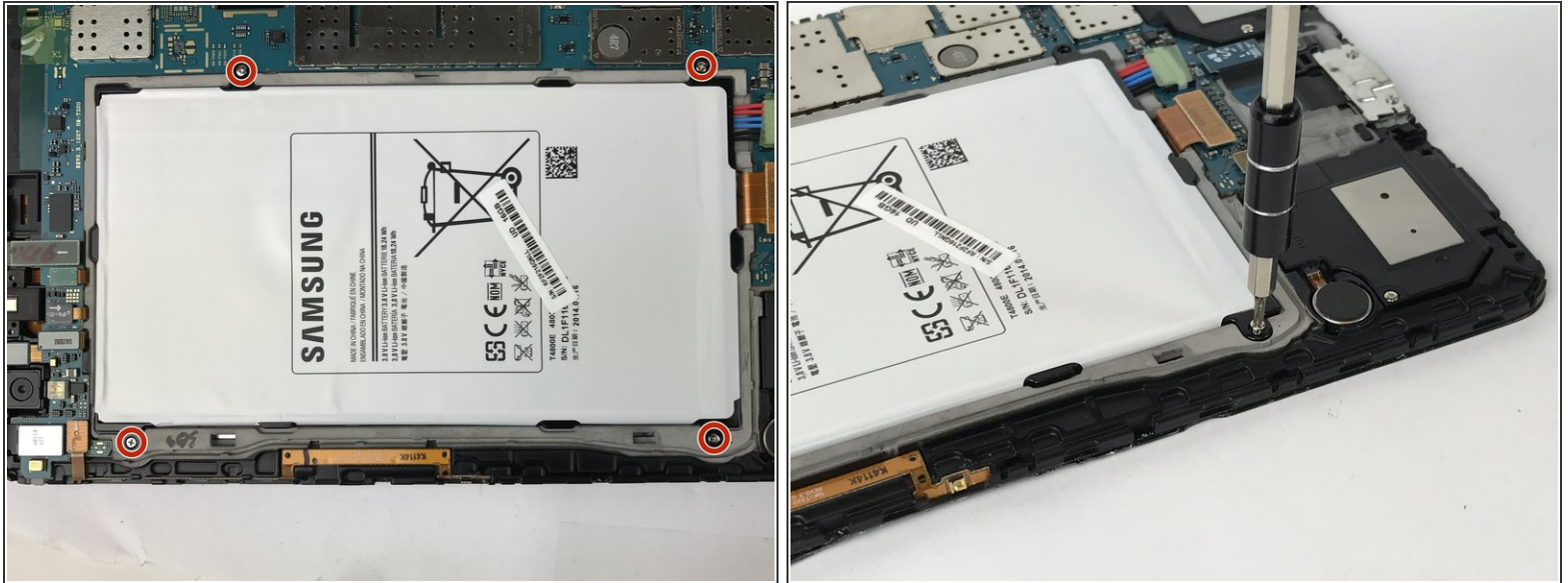
- Begin by separating the back panel from the screen glass assembly using the plastic opening tool.
- Insert the plastic opening tool between the edge of the glass screen and the metal frame around the device.

## Step 2



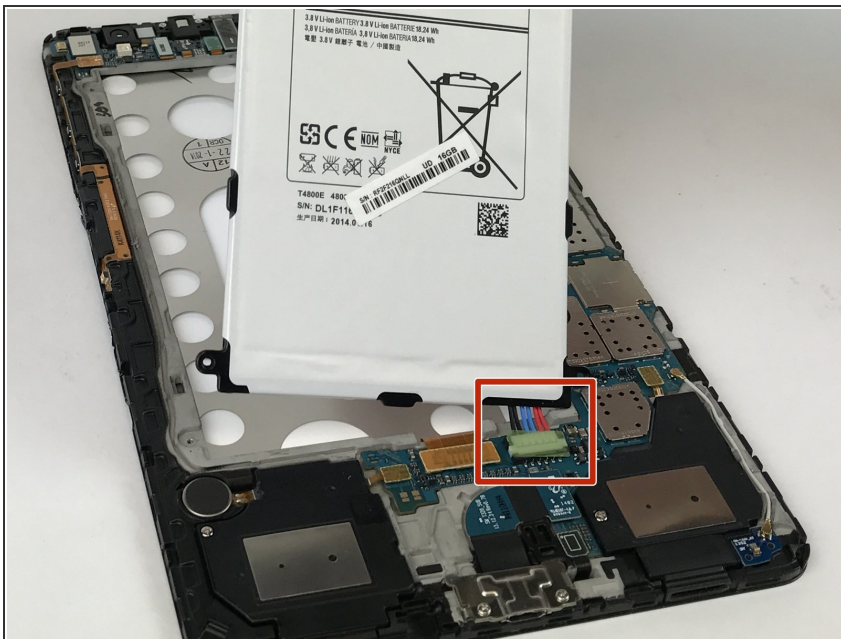
- Continue around the entire device until the back panel is completely separated from the screen.

### Step 3



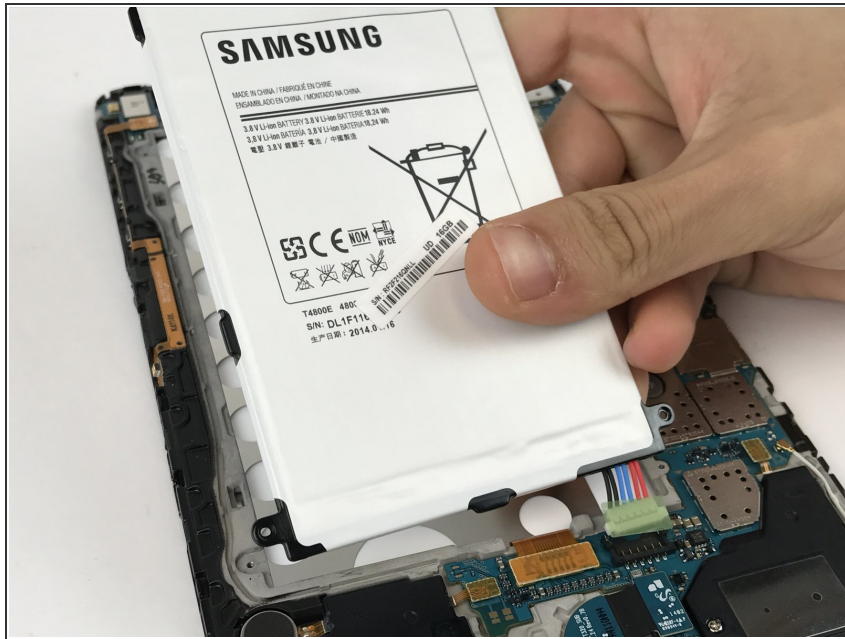
- Remove the four 2.5mm Phillips #000 screws.

### Step 4



- Gently pull up on the plastic tab that has red, blue and black wires that connects the battery to the motherboard.

## Step 5



- The battery should be completely disconnected and the new one can be installed.

To reassemble your device, follow these instructions in reverse order.