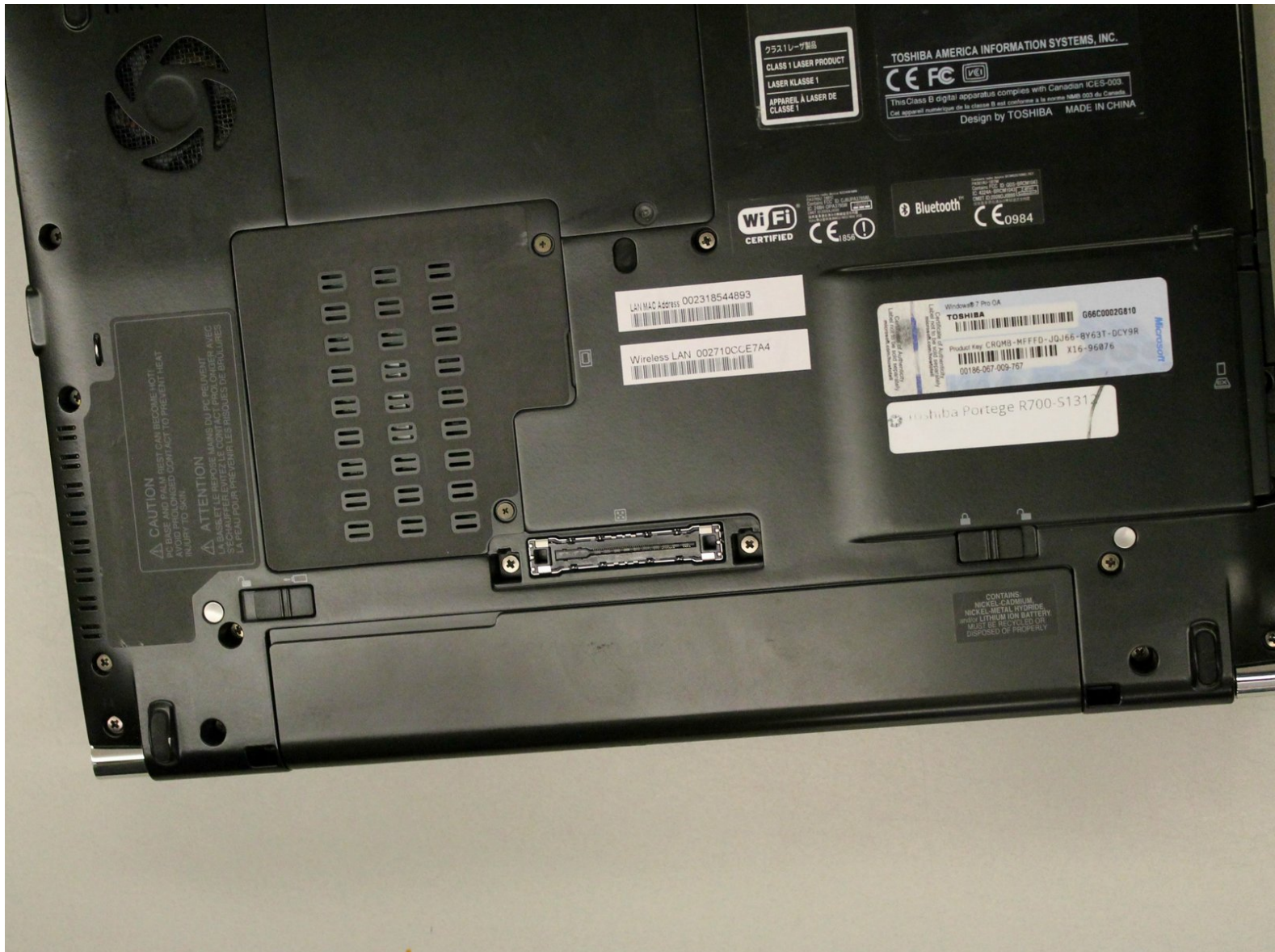




Toshiba Portege R700-S1312 Battery Replacement

This guide will teach you how to replace your laptop's battery.

Written By: India



INTRODUCTION

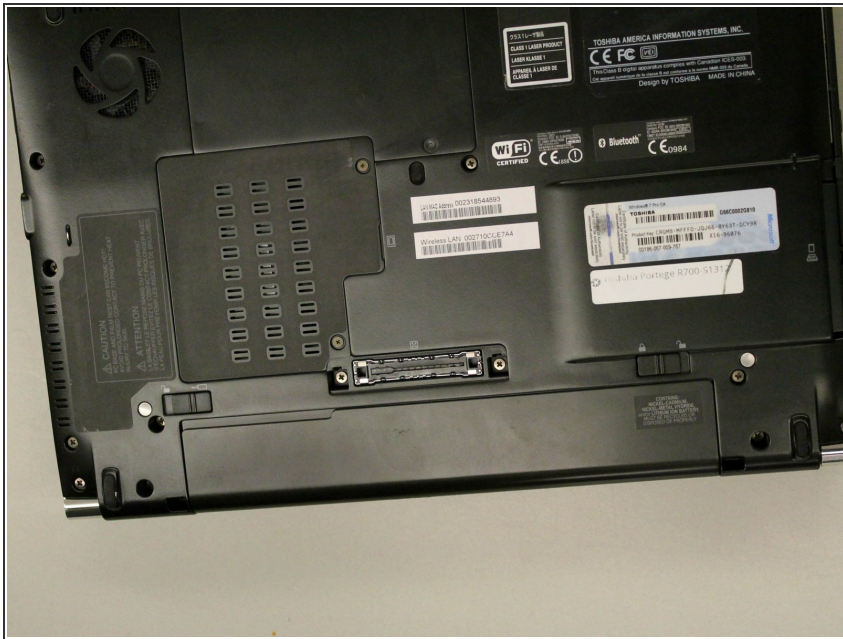
This guide demonstrates how to replace a Toshiba Portege R700-S1312 battery in order to preserve the device's function.



PARTS:

- [Toshiba Portege R700-S1312 Battery](#) (1)
-

Step 1 — Battery



- Locate the battery on the backside of the laptop. The battery is usually located at the bottom.

Step 2



- Locate the battery lock button and push it towards the unlock position.

Step 3



- Hold the next lock in the unlock position. Simultaneously pull the battery towards you.

To reassemble your device, follow these instructions in reverse order.

This document was last generated on 2019-07-28 10:31:18 AM.