



Nexus S Rear Inner Frame Replacement

Written By: Walter Galan



INTRODUCTION

Internal prereq..

TOOLS:

- [Phillips #00 Screwdriver](#) (1)
 - [iFixit Opening Tools](#) (1)
-

Step 1 — Rear Inner Frame



- Remove the six Phillips screws securing the rear inner frame to the inner case.

Step 2



- Insert the flat edge of a plastic opening tool in between the rear inner frame and the top left corner of the Nexus S.
- Pry the opening tool upwards to pop the top right corner from the clips securing it to the inner assembly.

Step 3



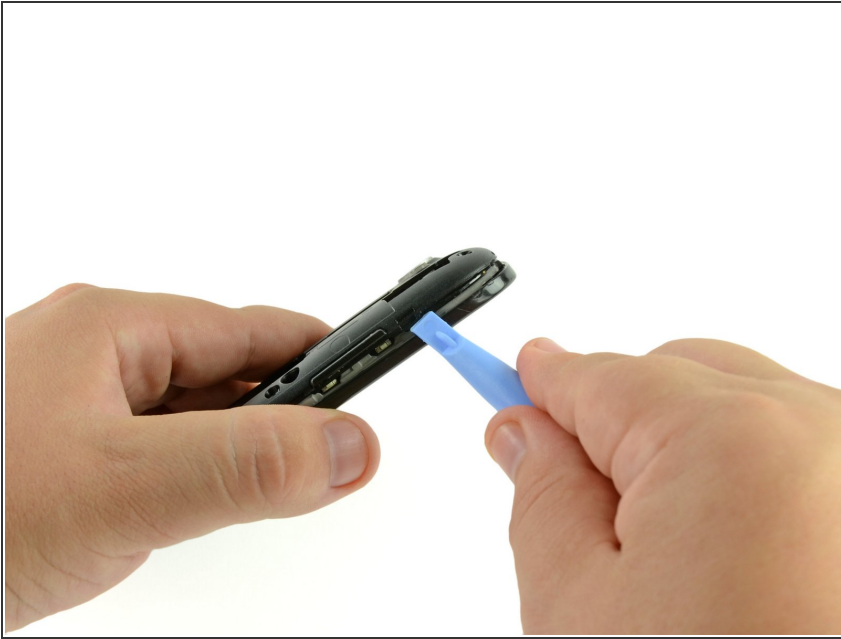
- Insert the plastic opening tool to the right of the power button.
- Slide the plastic opening tool downwards along the perimeter of the Nexus S to release the clips on the right side.

Step 4



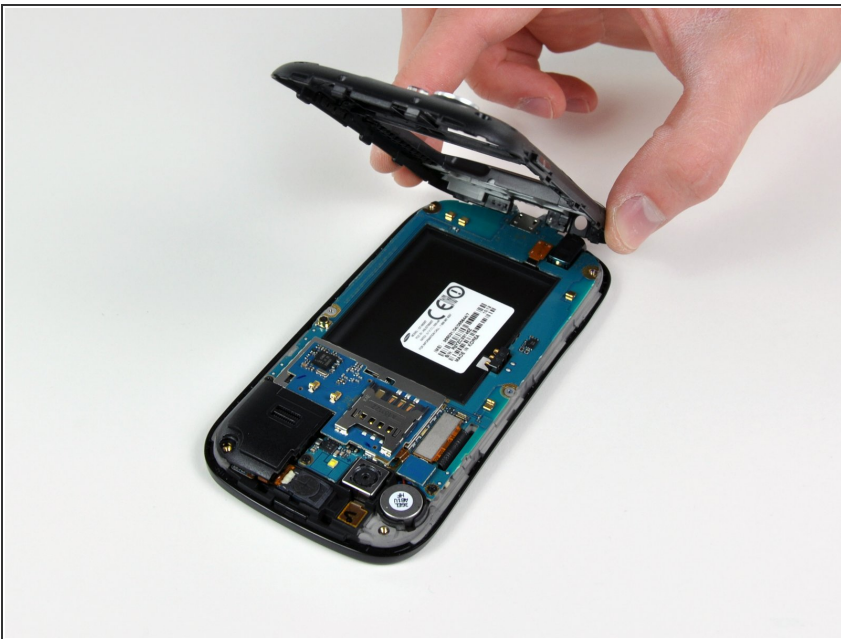
- In the same manner as previously described, release the bottom clips located near the bottom of the Nexus S.

Step 5



- Insert and pry the plastic opening tool to release the final clip securing the rear inner frame to the inner assembly.

Step 6



- Lift and remove the rear inner frame from the Nexus S.

To reassemble your device, follow these instructions in reverse order.