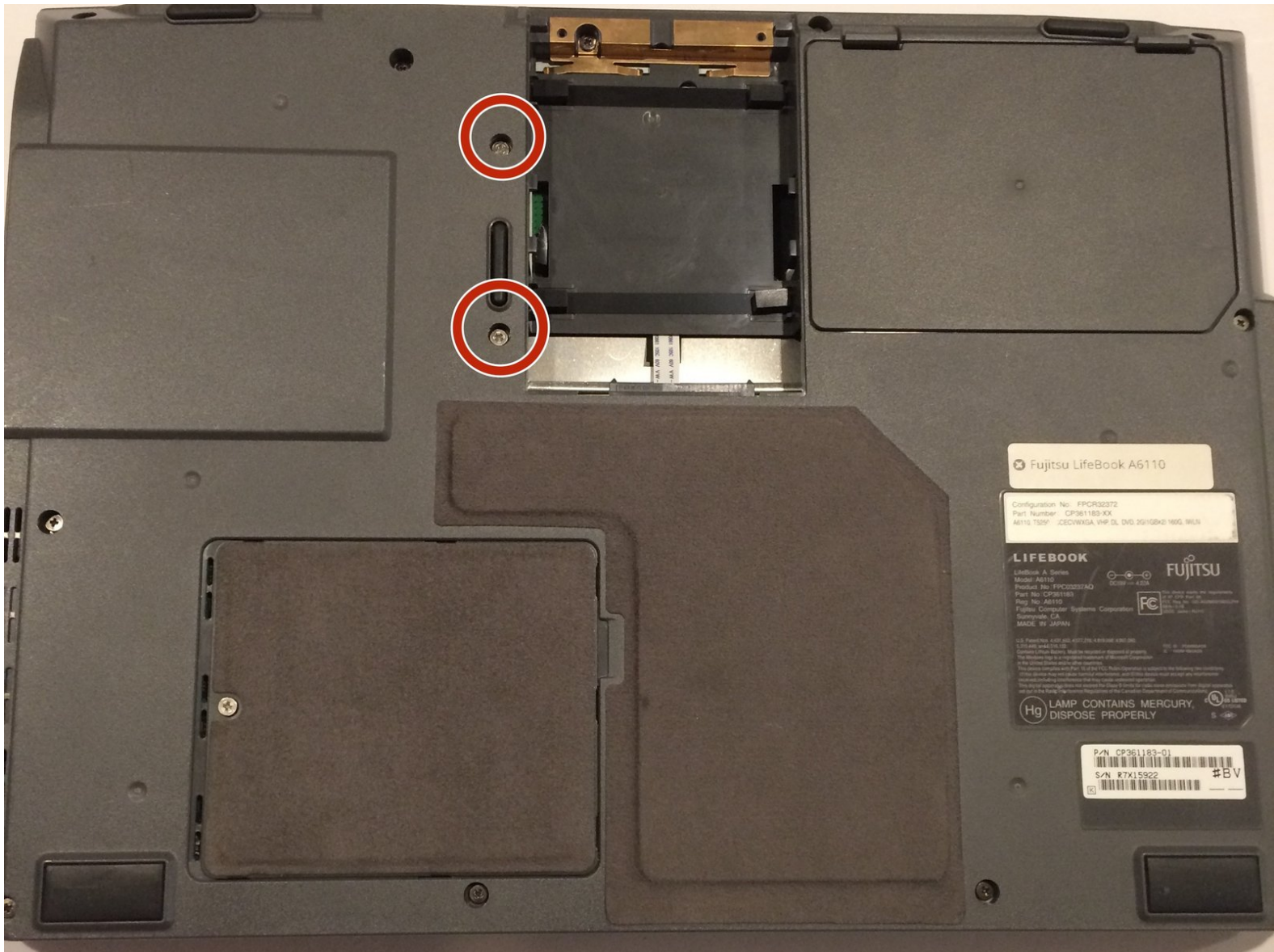




# Fujitsu Lifebook Model A6110 Disk Drive Replacement

This guide will provide you with a step-by-step process for locating and replacing the computer's disk drive.

Written By: Cody Moniz



This document was generated on 2019-09-22 09:31:09 PM (MST).

---

## INTRODUCTION

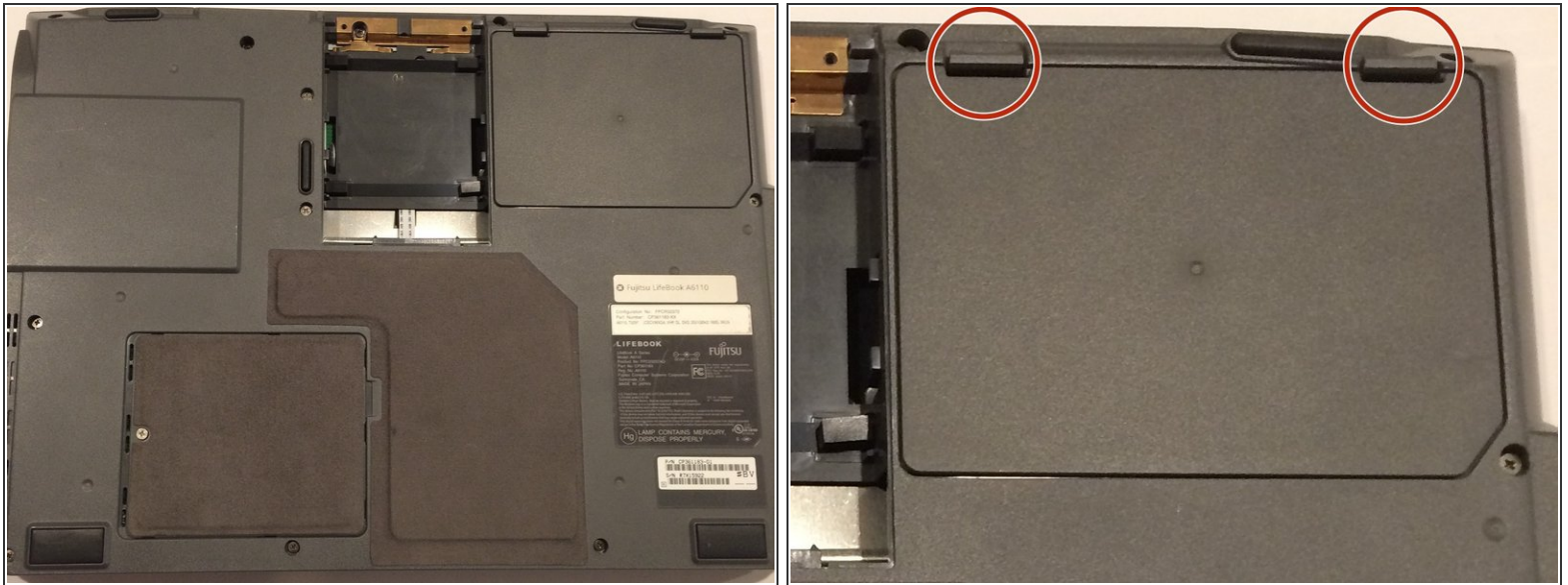
If your laptop fails in reading whatever disc you have, then the problem may lie on either your disc or your disk drive. This guide will show you the steps to replace your disk drive.

---

### TOOLS:

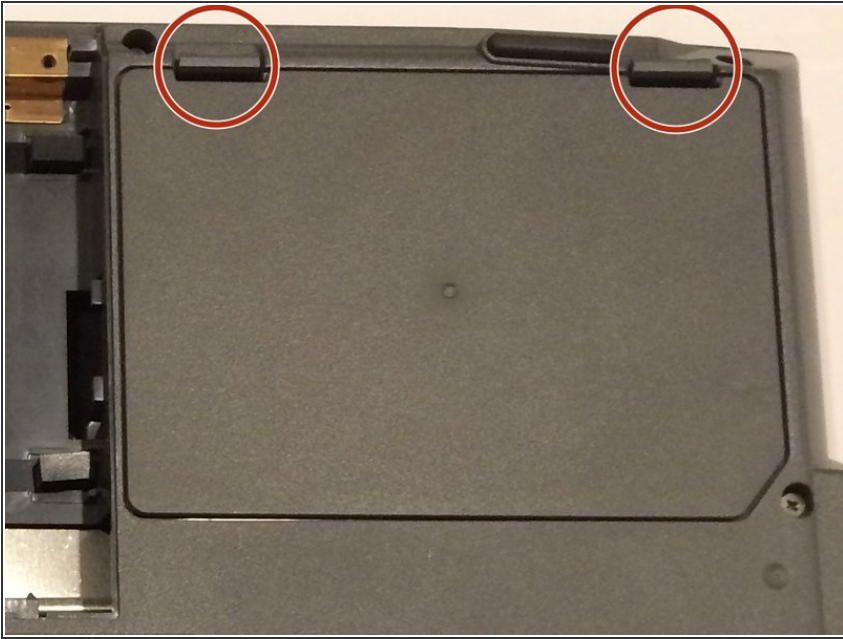
- [Heavy-Duty Spudger](#) (1)
  - [Phillips #1 Screwdriver](#) (1)
-

## Step 1 — Battery



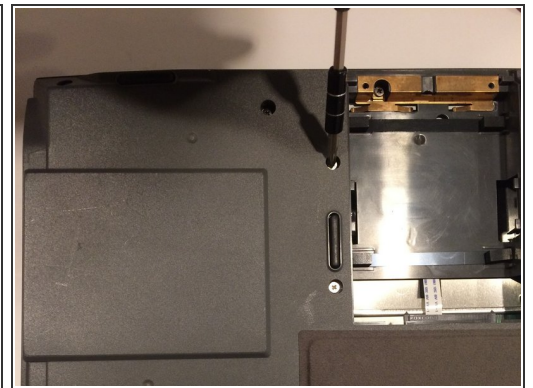
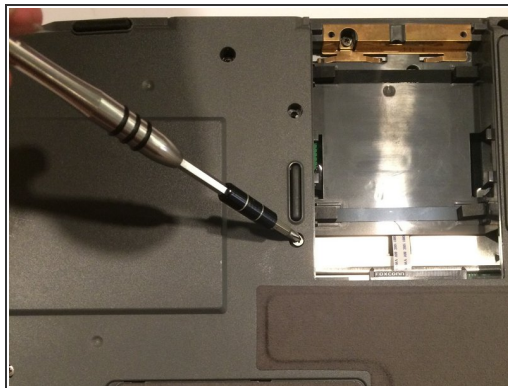
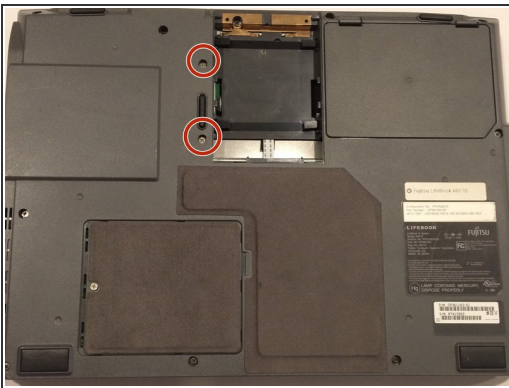
- ⚠ The computer should be turned off before starting. In addition, the laptop should remain closed throughout the duration of this replacement, unless otherwise noted.
- ⚠ Before handling any electronic components, you should ground yourself. This will prevent damage to the components from any charge you may be carrying. You can do this by touching any metal objects.
- Flip your laptop such that the bottom of the laptop is facing up.
- Make sure you can read the label on the bottom part. If the label is upside down, you will need to re-position the laptop until you can properly read it. As an alternative, the hinges for the screen should be facing towards you.

## Step 2



- Place your fingers under the clips, and lift up on them while pulling them towards you.
- This will remove the battery.

## Step 3 — Disk Drive



- The disk drive will be located on the side of the computer, on the top-left corner
- Using a Phillips #1 screwdriver, remove the two 6 mm screws which are located above the disk drive. Remove the screws by turning your screwdriver counter-clockwise.

## Step 4



- Insert the metal spudger in the gap between the disk drive and the laptop's body itself, as seen in the picture.
- Push the spudger down, so that it is behind the drive.
- Gently pull the disk drive out from the laptop until it unlatches.

## Step 5



- Once the disk-drive has been unlatched from its slot, pull it gently from the laptop case.

To reassemble your device, follow these instructions in reverse order.