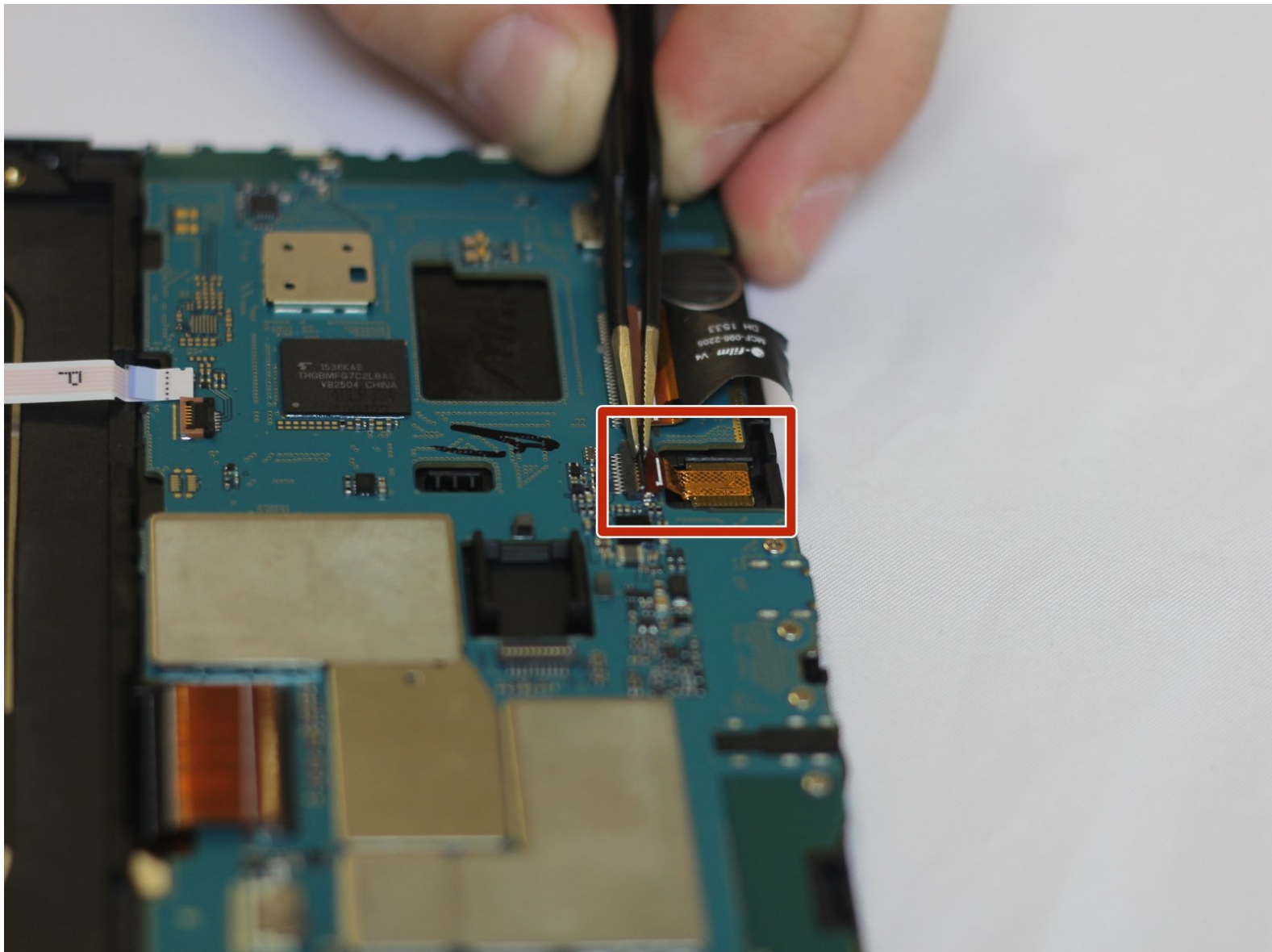




Samsung Galaxy Tab E 9.6 Verizon Front Camera Replacement

The front camera of the Galaxy Tab E 9.6 Verizon can easily break if mishandled or dropped. This guide will help you replace it if it happens to break.

Written By: William Gorham Jr



This document was generated on 2019-09-28 11:39:07 PM (MST).

 **TOOLS:**

- [Suction Handle](#) (1)
 - [Tweezers](#) (1)
 - [iFixit Opening Tools](#) (1)
-

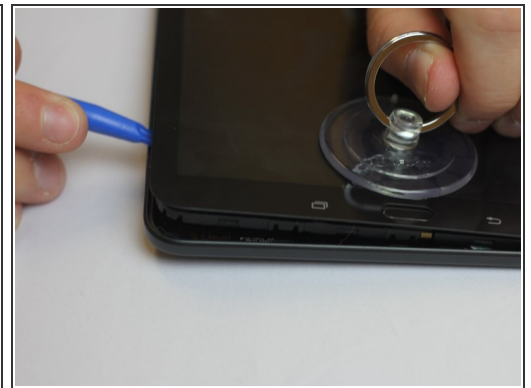
Step 1 — Back Casing



⚠ If the device has a micro-SD or SIM card inserted, remove them from the device before continuing.

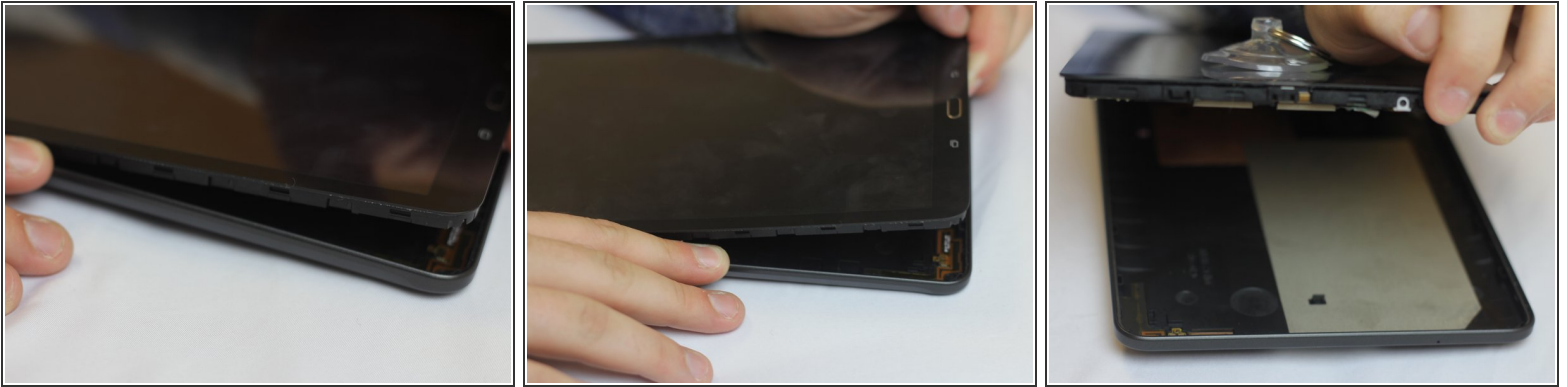
⚠ Verify your device is turned OFF after removing all external peripherals from it. Power down the device if it's turned on.

Step 2



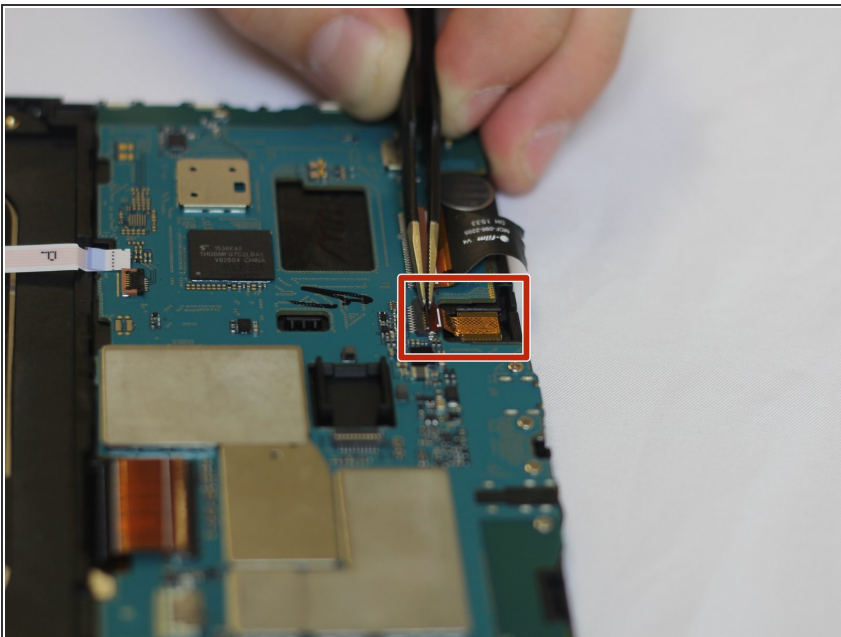
- Insert a plastic opening tool in between the edge of the device's screen and its back cover. Once the tool is wedged between the glass and back casing, move the tool around the edges of the device to undo the plastic clips holding the casing attached.
- i** Inserting the tool and prying off the back casing requires a good deal of force. If you're having trouble undoing the clips, try using a suction cup on the screen to increase separation with the back casing.

Step 3



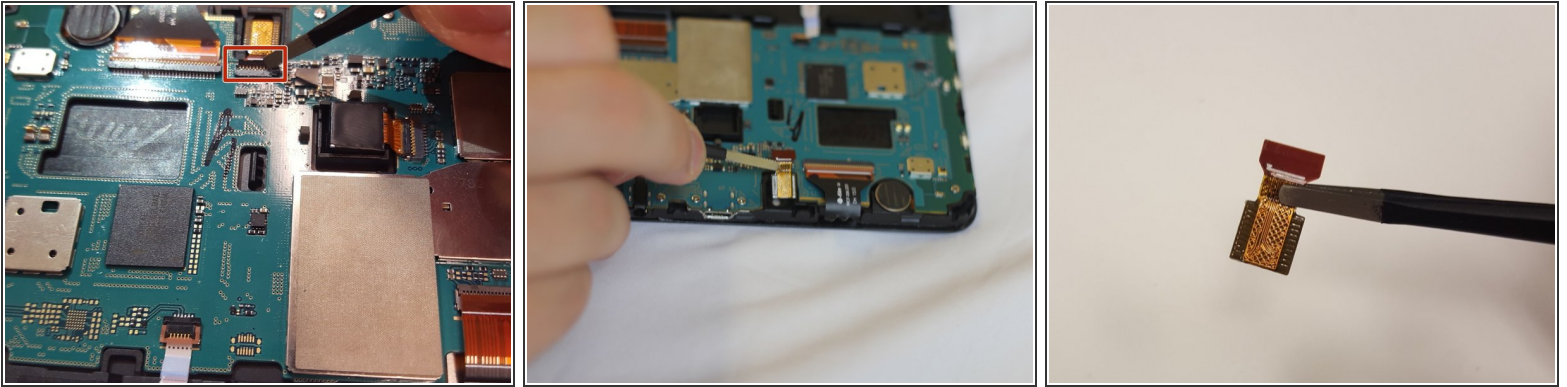
- As more clips are undone, it will become easier to further separate the device from its casing. Once you're able to separate roughly half of the device from the back casing, use your hands to gently pull the back cover off of the device.
- ☑ Don't forget: after creating some separation between the device and back case, you can use a suction cup attached to the screen to aid in pulling the device apart.

Step 4 — Front Camera



- The front camera is located at the top middle of the motherboard as shown in the picture by the red rectangle.

Step 5



- In order to remove the front camera you must first remove the ribbon wires connecting the camera to the mother board.
- To do that you need to use tweezers to flip a black latch away from the camera, towards the bottom of the tablet. This latch being flipped up will allow you to pull out to ribbon wiring easily.
- Once the ribbon wire is removed, pull the camera out.

To reassemble your device, follow these instructions in reverse order.