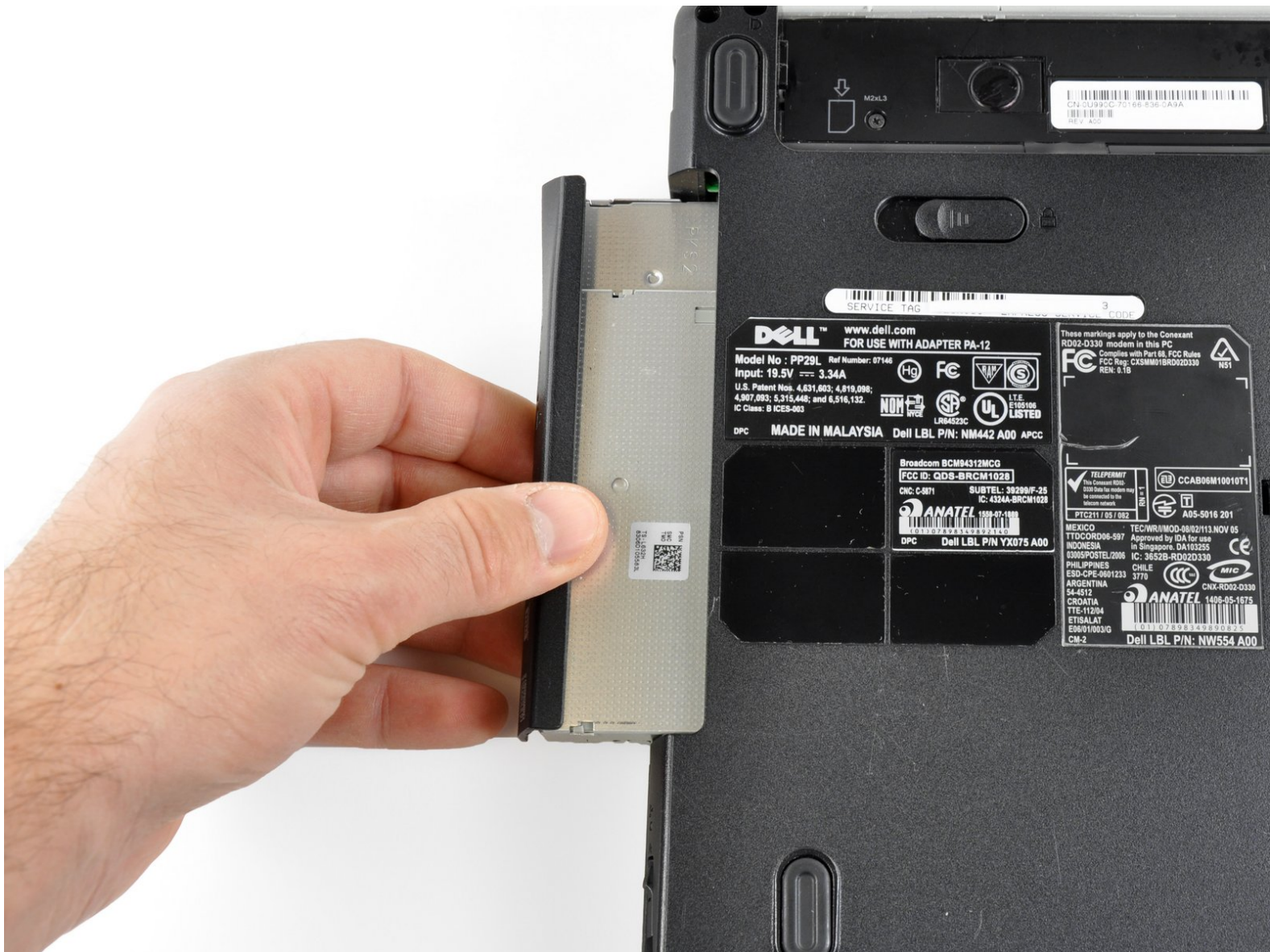




# Dell Inspiron 1525 Optical Drive Replacement

Replace the optical drive in the Dell Inspiron 1525 optical drive.

Written By: Miroslav Djuric



---

## INTRODUCTION

Use this guide to replace the optical drive in your Dell Inspiron 1525.

---

### TOOLS:

- [Phillips #1 Screwdriver](#) (1)
-

## Step 1 — Battery



- Locate the battery release switch on the bottom of the laptop.

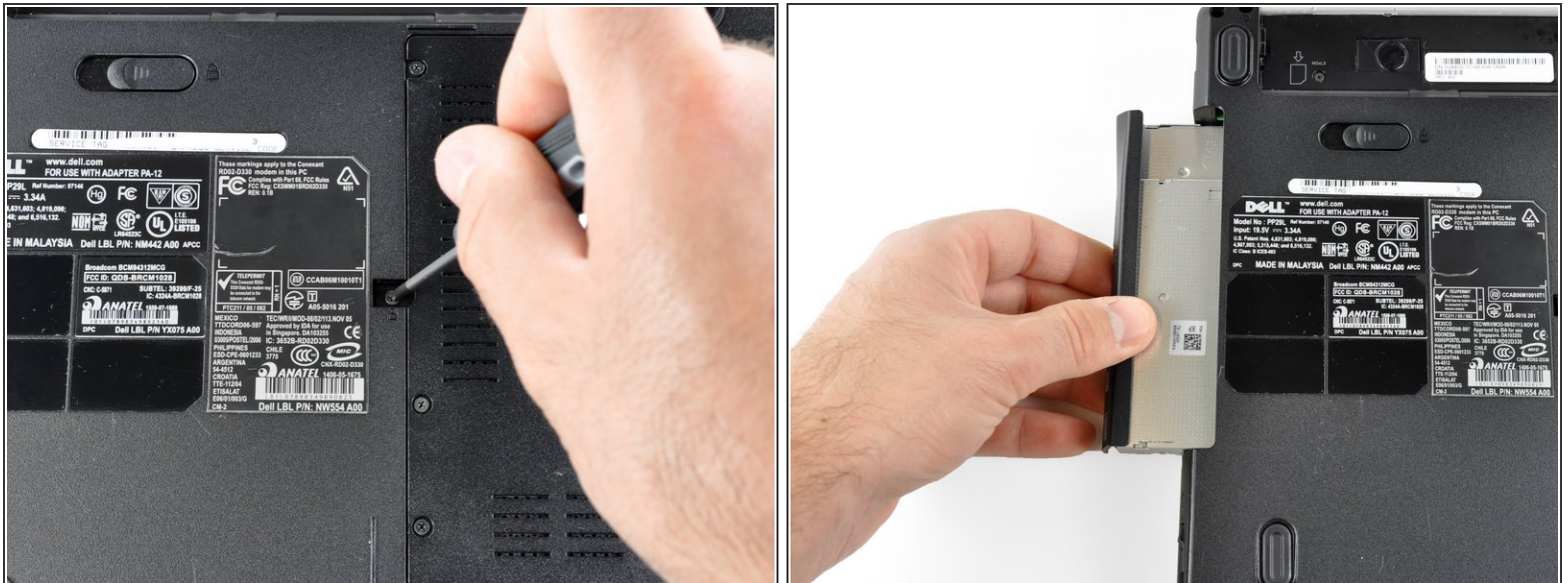
## Step 2



- Slide the battery release switch away from the lock symbol until you hear the battery click.
- Slide the battery towards the back of the laptop until it comes free.



## Step 3 — Optical Drive



- Remove the 5.75 mm #1 Phillips screw securing the optical drive.
- Pull the optical drive straight from the laptop.

To reassemble your device, follow these instructions in reverse order.

This document was last generated on 2019-07-21 03:41:09 PM.