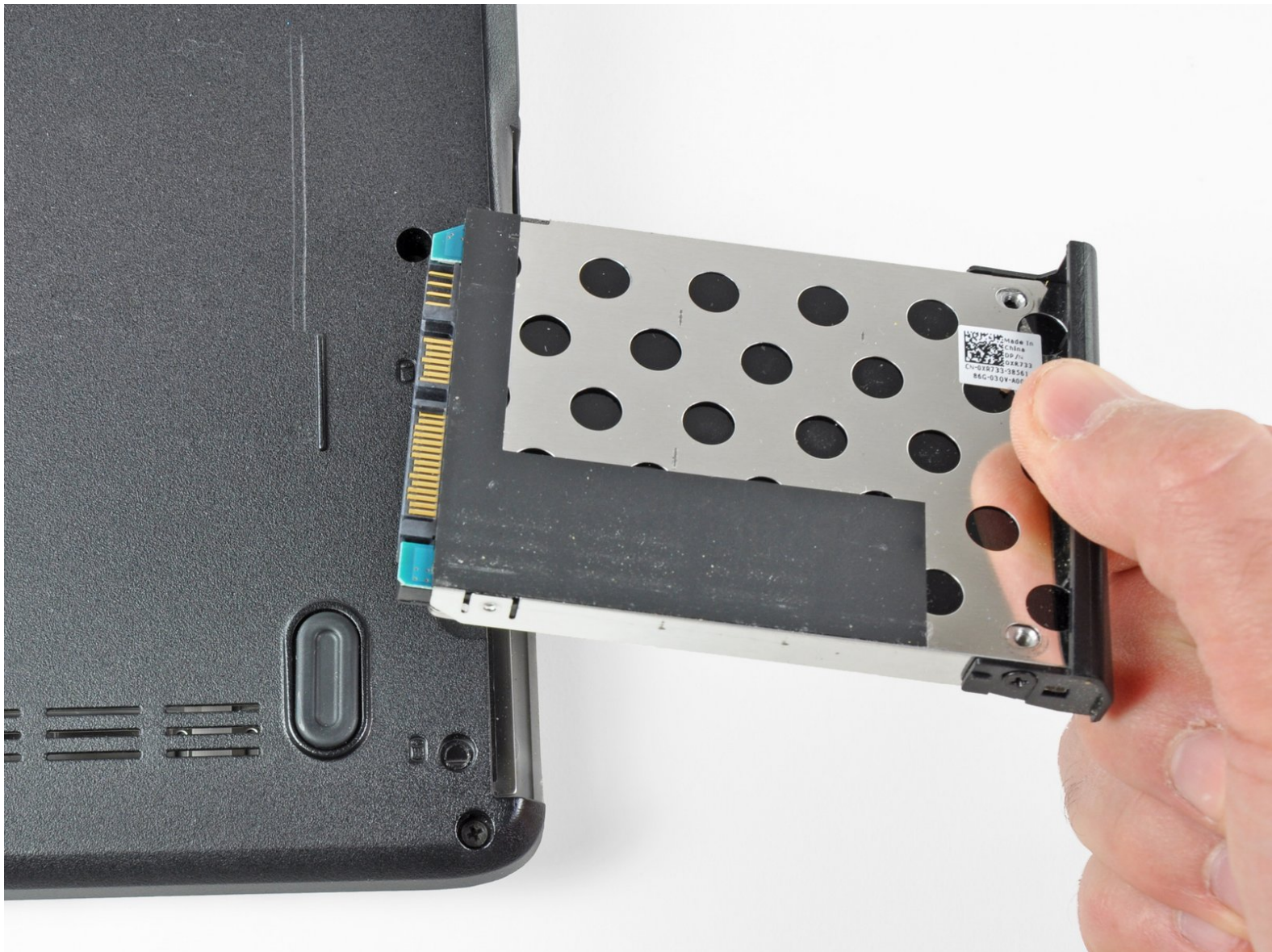




Dell Inspiron 1525 Hard Drive Replacement

Replace the hard drive in a Dell Inspiron 1525.

Written By: Miroslav Djuric



INTRODUCTION

Use this guide to help you replace the hard drive in a Dell Inspiron 1525.

TOOLS:

- [Phillips #1 Screwdriver](#) (1)
-

Step 1 — Battery



- Locate the battery release switch on the bottom of the laptop.

Step 2



- Slide the battery release switch away from the lock symbol until you hear the battery click.
- Slide the battery towards the back of the laptop until it comes free.

Step 3 — Hard Drive



- Remove the two 3.60 mm #1 Phillips screws securing the hard drive and hard drive tray.
- Slide the hard drive and hard drive tray out of the laptop.

To reassemble your device, follow these instructions in reverse order.

This document was last generated on 2019-07-08 08:43:12 PM.