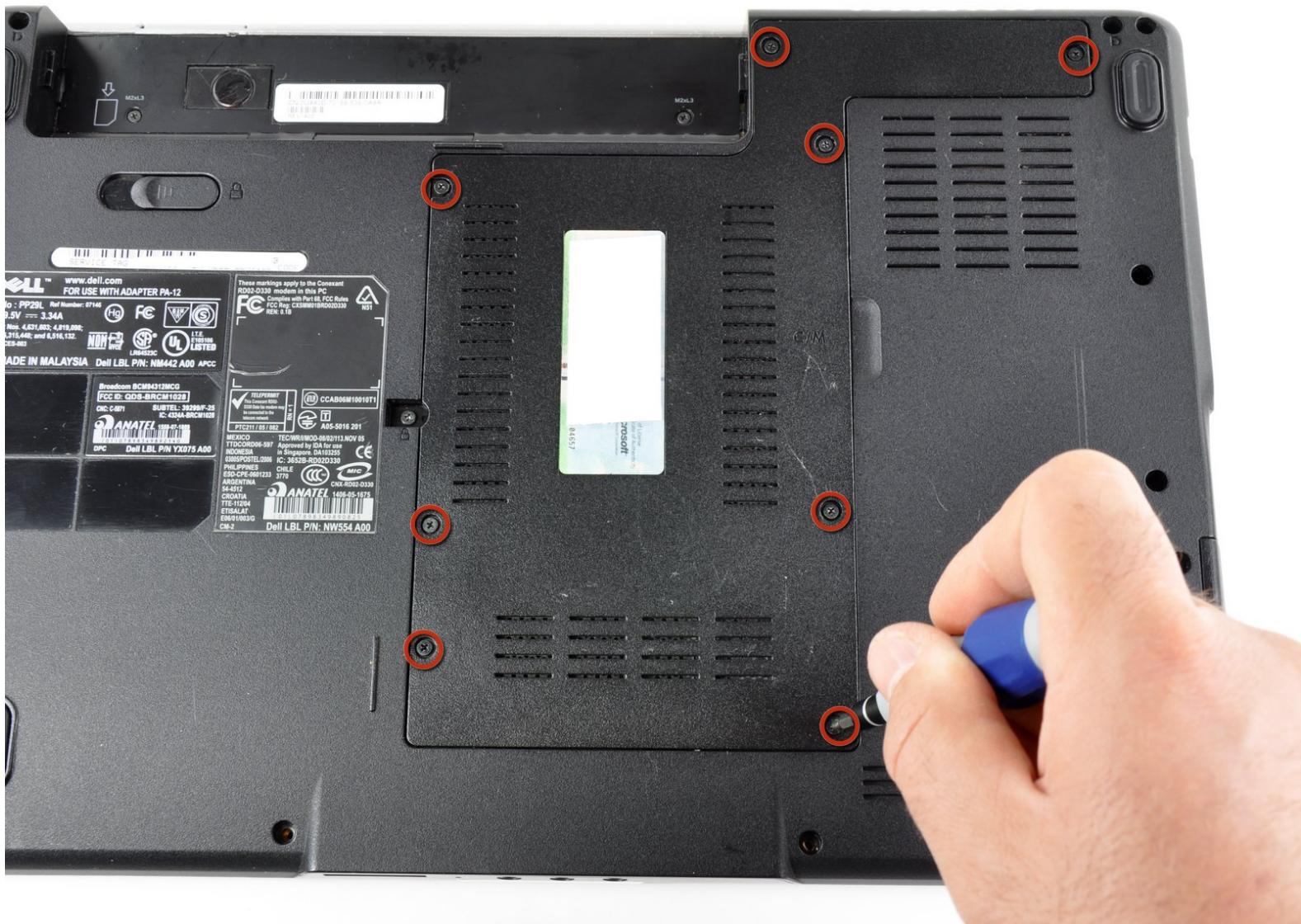




# Dell Inspiron 1525 Bottom Cover Replacement

Written By: Miroslav Djuric



 **TOOLS:**

- [Phillips #1 Screwdriver](#) (1)
-

## Step 1 — Bottom Cover



- Remove/loosen the eight 4.80 mm Phillips #1 screws securing the bottom panel.
  - The screws may only need to be loosened, as they are generally retained by plastic washers.
- Remove the bottom panel.

To reassemble your device, follow these instructions in reverse order.