



# VTech InnoTab 2s Back Panel Replacement

This guide will help you remove the back cover of the device.

Written By: Ricardo Espinosa



 **TOOLS:**

- [JIS Driver Set](#) (1)
  - [iFixit Opening Tools](#) (1)
  - [Metal Spudger](#) (1)
-

## Step 1 — Back Panel



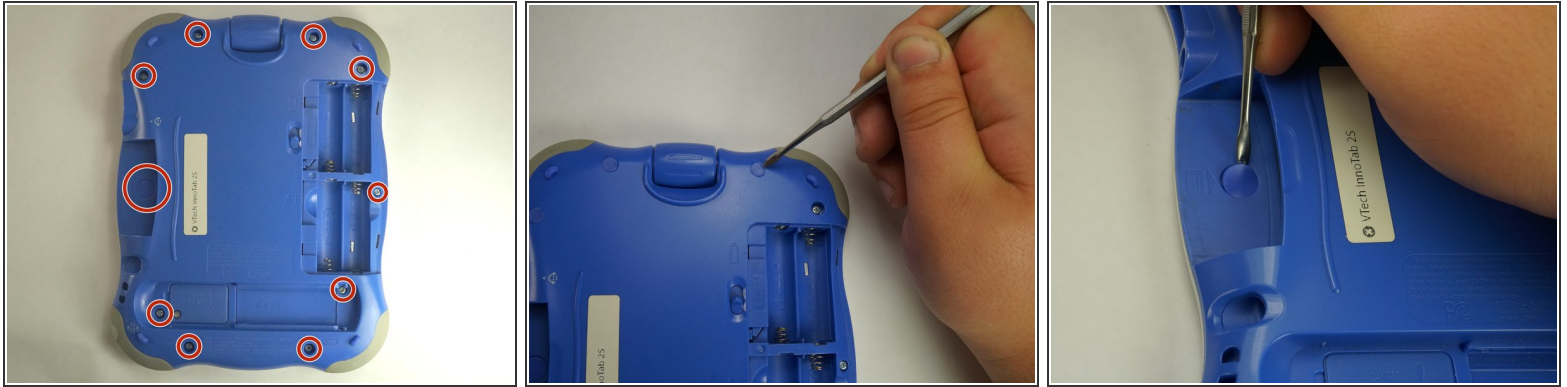
- Turn your device to where the back panel is facing you.

## Step 2



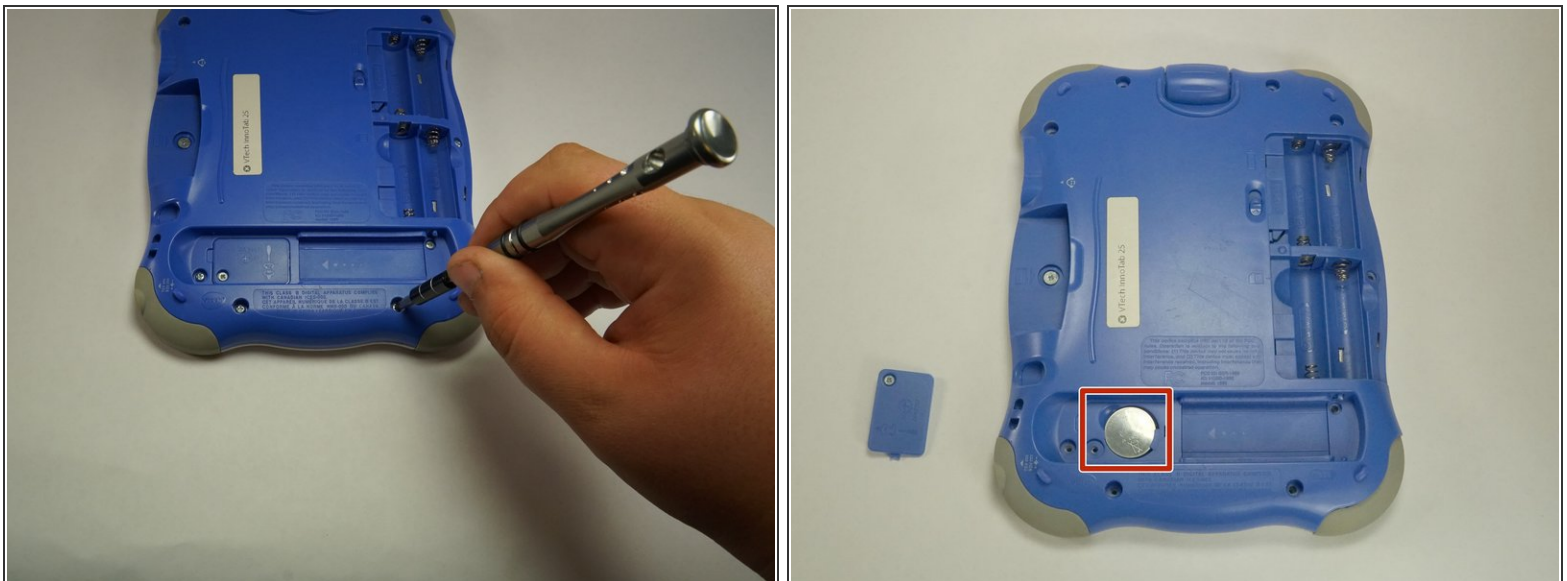
- Lift the Leg all the way up and twist the bottom to remove.
  - Once the bottom part pops out the whole leg should just come off.
  - Remove any game cartridge from the device.

### Step 3



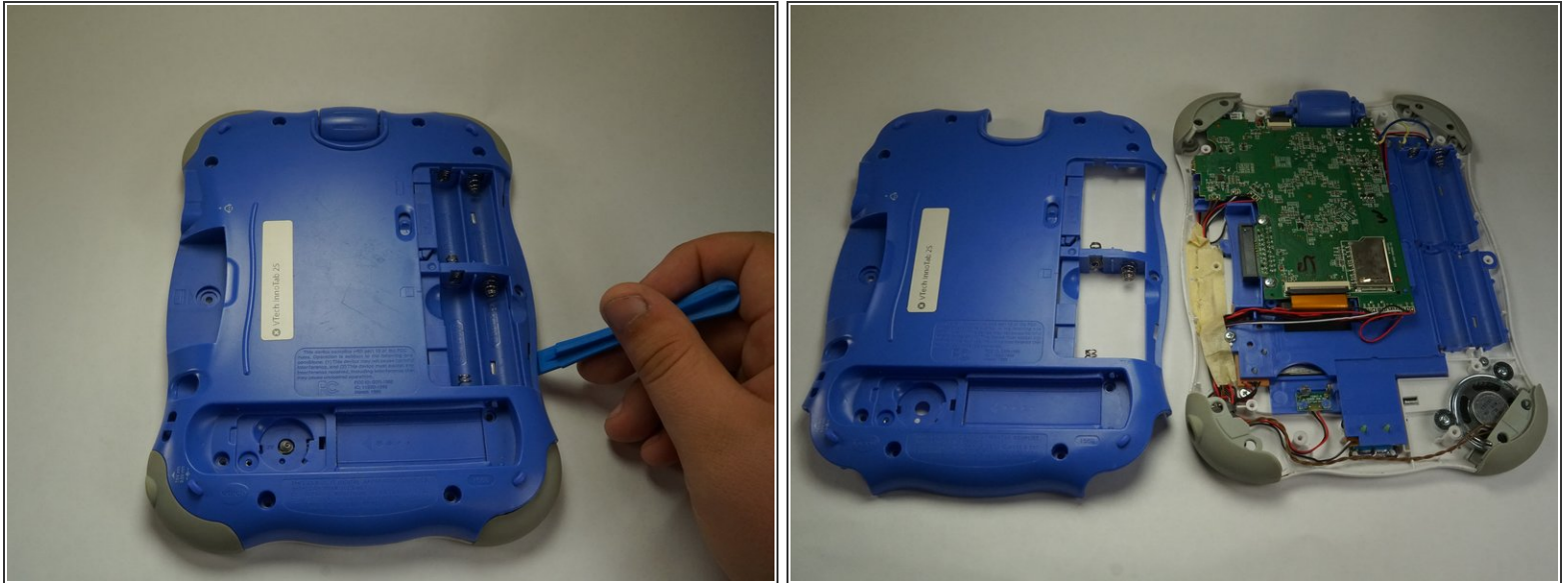
- Remove all of the plastic tabs on the device. These are covering screws that will need to be removed.
- ⚠ These covers are made of hard plastic so they may be difficult to remove.
- There is a special tab in the cartridge cover that is made of rubber, make sure to not break this tab.

### Step 4



- Remove all nine screws from the back of the device using a J0 bit.
- Remove the small battery.

## Step 5



- Using a plastic opening tool, detach the backplate from the front piece.
  - ⚠ Do not use excessive force. Double check that you removed all the screws if the panel is not coming off easily.
- Once the backplate has been removed, you will have access to the circuit board.

To reassemble your device, follow these instructions in reverse order.