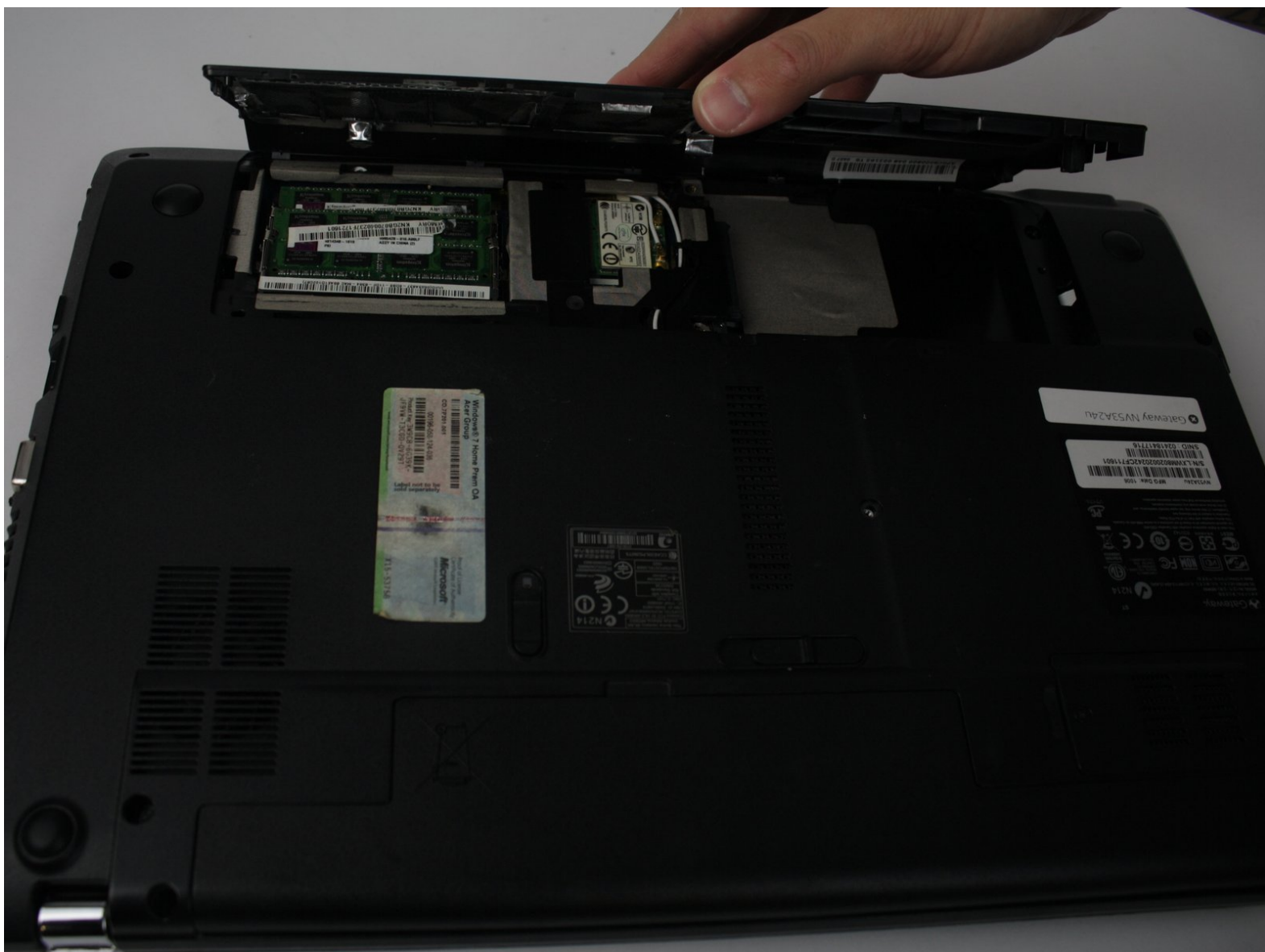




Gateway NV53A24u Hard Drive Replacement

Taking out and replacing the hard drive

Written By: Jonathan Fernandez



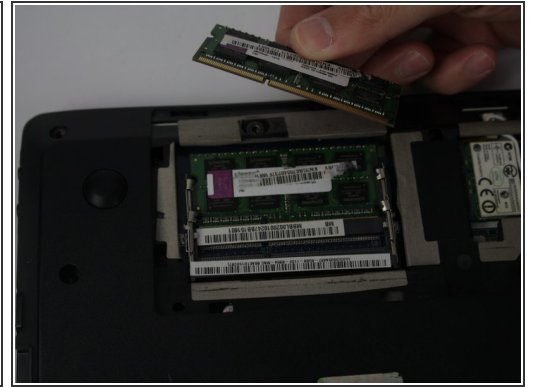
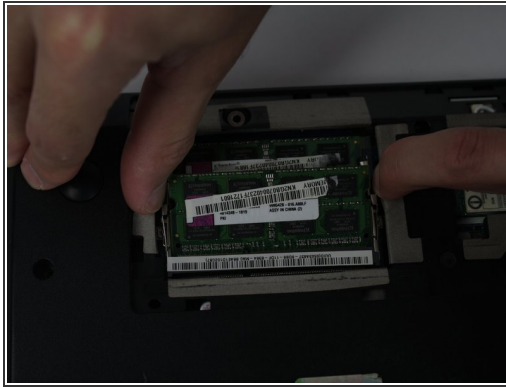
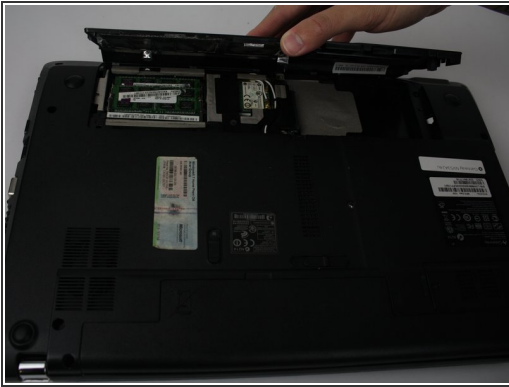
INTRODUCTION

This guide will show you how to replace the RAM

TOOLS:

- [Phillips #0 Screwdriver](#) (1)
-

Step 1 — RAM



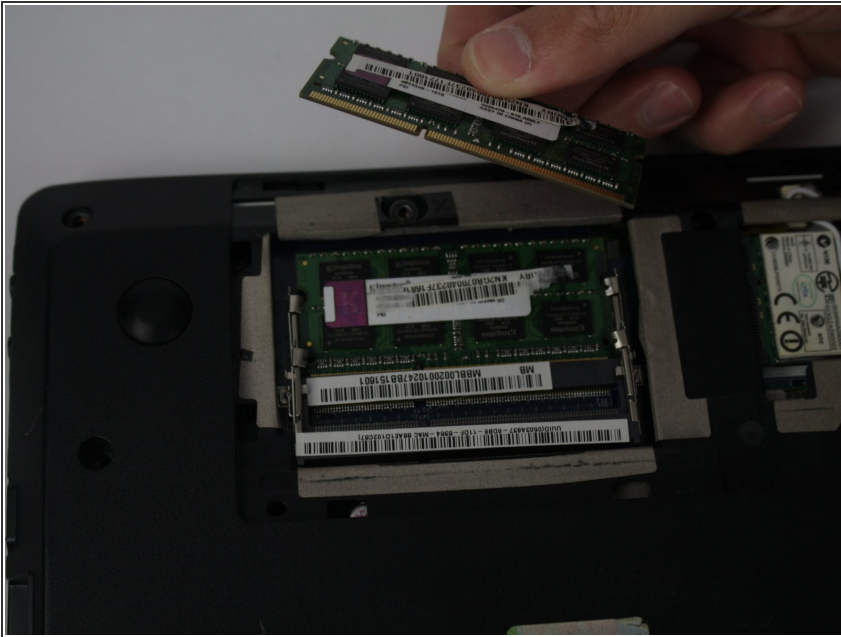
- Pop off the back cover

Step 2



- On both sides of the ram, gently grip the sides and pull out of the slot

Step 3



- The ram will gently come out and now you can replace it with a new one

To reassemble your device, follow these instructions in reverse order.