



Singer EZ-Stitch Backstitch

How to finish your stitch to hold the thread in place using a Singer EZ-Stitch.

Written By: Alexandra Ireland



INTRODUCTION

This guide is intended to demonstrate how to perform a backstitch using a Singer EZ-Stitch. A backstitch is a form of sewing that uses overlapping stitches to hold the thread in place. The Singer EZ-Stitch can only do what's known as a chainstitch. That means that it uses just one spool of thread rather than the traditional bobbin and spool that most machines use.



TOOLS:

- [Utility Scissors](#) (1)
-

Step 1 — Singer EZ-Stitch Backstitch



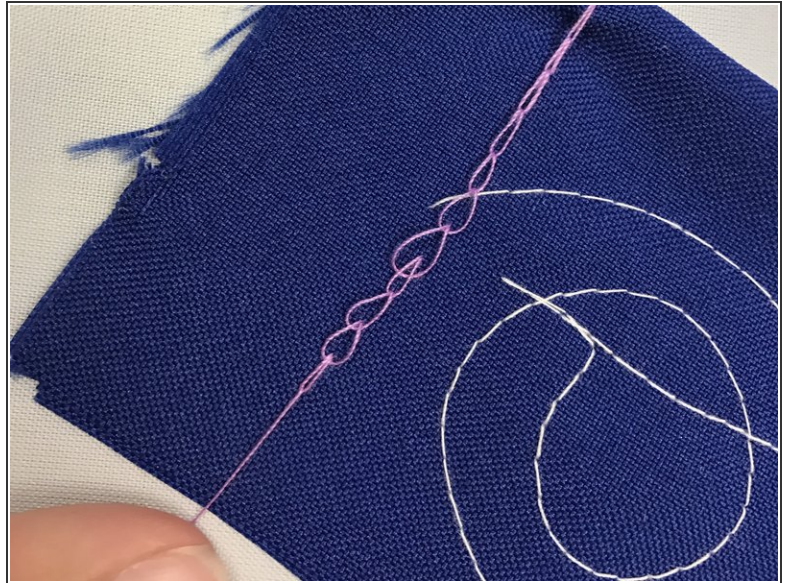
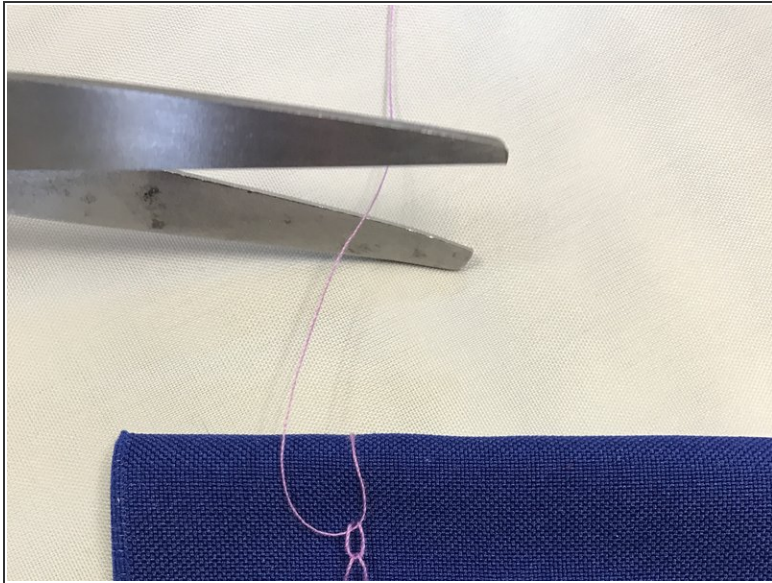
- Complete your first line of stitching.

Step 2



- Without pressing on the pedal, turn your fabric so that the end of the line of stitches you just made is now closest to you.
- Press the peddle and continue stitching back over your previous line.
- ⓘ You can repeat this step as many times as you'd like, until you feel that the thread is secure

Step 3



- Trim your thread.

i A completed chainstitch should look something like the purple thread in the second photo.

You have finished a line of stitching using the Singer EZ-Stitch.