



# Redmi Note 4 Screen and bracket Replacement

many thanks to 伊诺通讯 for this video(in chinese)

[http://v.youku.com/v\\_show/id\\_XMTc3NDA5NDMyNA==.html?from=y1.7-1.2](http://v.youku.com/v_show/id_XMTc3NDA5NDMyNA==.html?from=y1.7-1.2) (screen only)

[http://v.youku.com/v\\_show/id\\_XMTc4MzI4NDQyOA==.html?from=y1.7-1.2](http://v.youku.com/v_show/id_XMTc4MzI4NDQyOA==.html?from=y1.7-1.2) (screen & bracket replacement)

Written By: sub ari

---

## TOOLS:

- [P2 Pentalobe Screwdriver iPhone](#) (1)
- [Phillips #0 Screwdriver](#) (1)
- [Suction Handle](#) (1)

*might be optional, but highly recommended*

- [Hair Dryer](#) (1)
- [iFixit Opening Tools](#) (1)

*might be optional*

---

## Step 1 — Screen and bracket



- take out the sim tray
- unscrew the two pentalobe P2 screws under the phone
- use a suction cup and a pryer to open the phone(Very Heavy!)

## Step 2



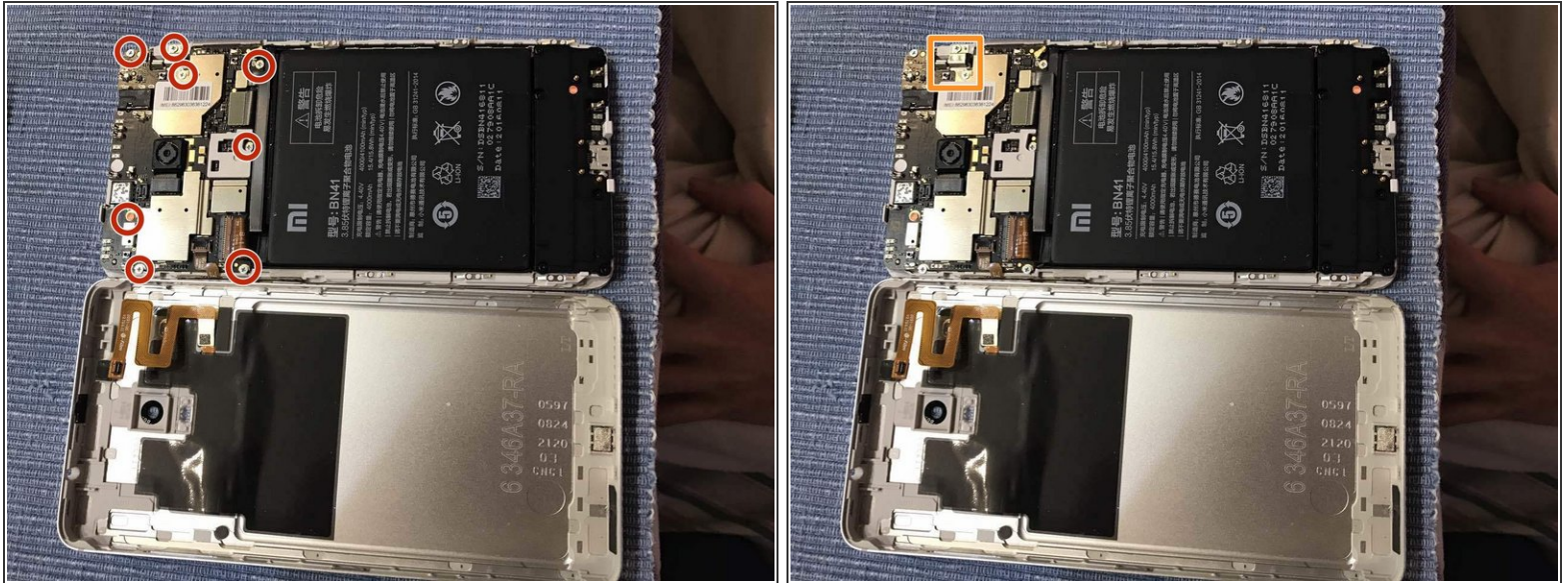
- fingerprint cable
- screen cable(display only)
- power cable
- buttons cable

### Step 3



- unplug the power cable. it should be attached just by pushing , so just lift it.
- unplug the screen cable. they are ZIF connectors.
  - you can test the new screen here, just by plugging the new screen cable, then the power cable
- unplug the button cable, also ZIFs.
- remove the battery using a hard rubber spatula.(it's got handle like iPhone's, but with china quality)
  - pry from the left bottom side. NEVER from the right side, or you might damage a cable.
- remove the remaining glue from the battery, and re-tape it inside the white lines with tapes like TESA 2mm.
- unplug antenna wire running down right side of phone to bottom mainboard.

## Step 4



- remove these phillips #0 screws on the upper board(forgot the number and the place, please add)
- remove the vibration motor cover
- remove the upper motherboard

## Step 5



- remove the phillips #0 screw from the lower casing
- they're black, so easy to recognize
- unplug all connectors(need photo)
- use a hair dryer to heat the lower board(it's got glue)
- be careful not to use force, the board is very fragile. If you feel hard to remove, heat it again.

## Step 6



- Heat the borders of your screen to loosen the glue.
- use a suction cup to open it.
  - the cables from the screen should all be detached at this moment
- remove all the remaining glue from the plastic bracket (I mean all)

## Step 7



- use tapes like TESA 2mm to re-glue the bracket.
  - you'll need to glue all the borders, but not around cameras, speakers, and proximity sensors.
  - Check the video I've linked to see where to glue.

## Step 8



- reverse the steps and you should be good to go!

To reassemble your device, follow these instructions in reverse order.