



How to fix a Philips Sonicare DiamondClean HX9340 when it is getting less powerful or has a weak brush.

Follow this guide to fix Philips Sonicare DiamondClean HX9340 after it acting less powerful than previously or if it seems like a weak brush.

Written By: moritz



INTRODUCTION

If your Sonicare is not as powerful as it used to be it could be because of a misalignment of the magnetic motor, e.g. if it's dropped. Philips built it like this on purpose and you need open the toothbrush and realign the magnetic motor.

Caution: Please only proceed if your toothbrush is out of warranty. If you are still within warranty then bring it back and get it fixed by professionals at Philips for free.

TOOLS:

- [New Item](#) (1)

Step 1 — How to fix a Philips Sonicare DiamondClean HX9340 when it is getting less powerful or has a weak brush.



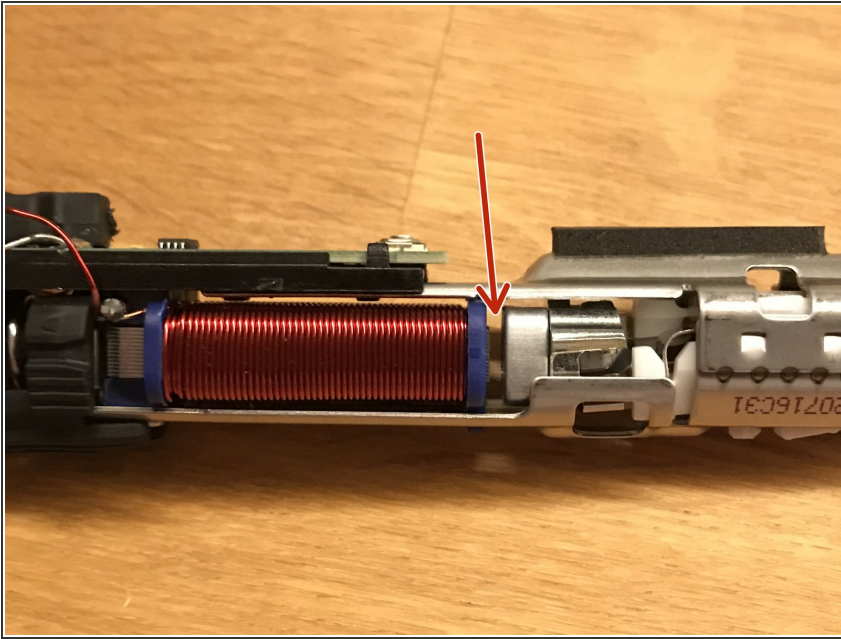
- First you need to open the toothbrush. This can be achieved by applying pressure to the lower end of the toothbrush which will allow the removal of the bottom cap.
- To protect the toothbrush from being mared by whatever tool is used, apply some cardboard or similar between the tool and the toothbrush

Step 2



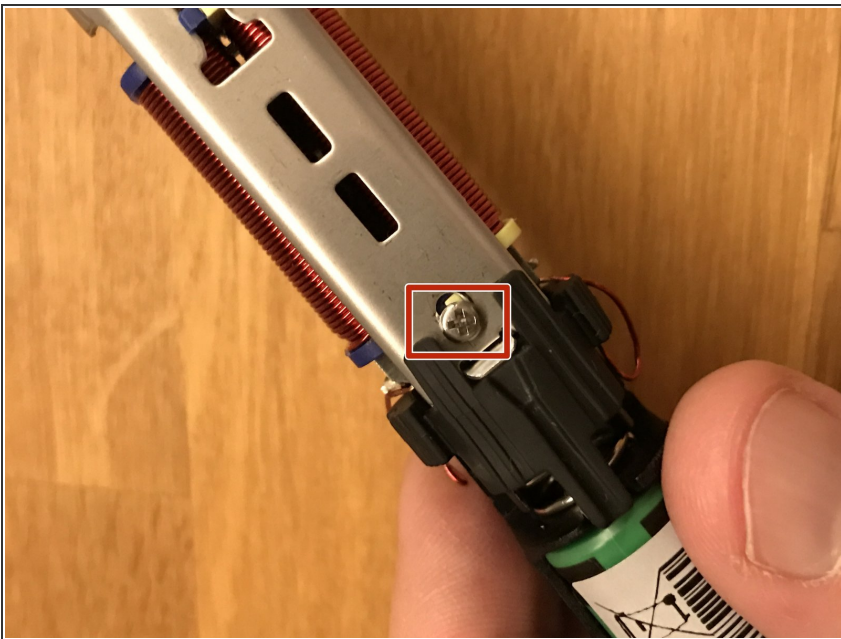
- Once the bottom cap is removed, use a screwdriver or a knife to release the actual insides of the toothbrush.
- There are various How-To's on how to do this. I would recommend to use [Philips Sonicare DiamondClean HX9340 Battery Replacement](#)

Step 3



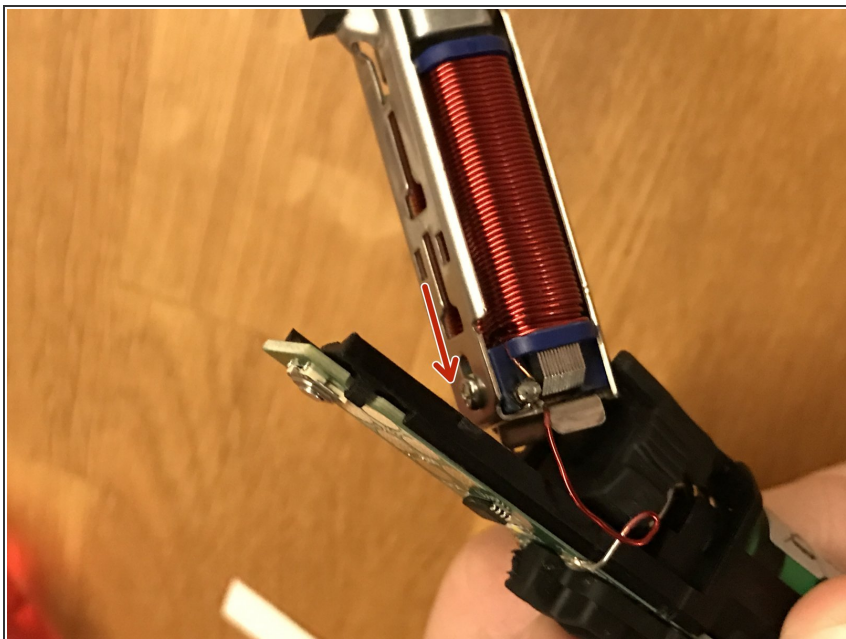
- Once you have the insides out, you have to look for this area.
- The silver red part are the two magnets. There needs to be a gap between the magnets and the metallic driver
- If your magnets are contacting, or are very close to them, please proceed with the next step.

Step 4



- The magnets are secured by two screws. One is easily accessible on the back of the toothbrush.
- The screw is mounted in a slot to allow for some adjustments. For whatever reason the screw has moved to the top of the brush, this will let the Magnets touch the driver which reduces the motion and power of the brush significantly.
- Loosen the screw on this side.

Step 5



- Apply some pressure to remove the circuit board and get access to the screw holding the magnets on the front side.
- If it has moved, loosen the screw, position the magnets in a way that there is a gap between magnets and driver and fasten both screws.

Repeat the steps in reverse order to reassemble your device.

This document was last generated on 2019-07-10 05:10:17 PM.