



Garmin Nuvi 255W Power Button Replacement

Installing a new Power Button for the Garmin Nuvi 255W.

Written By: Timothy



INTRODUCTION

If your power button is defective, replace the old one with the new power button.



TOOLS:

- [T5 Torx Screwdriver](#) (1)
- [iFixit Opening Tools](#) (1)



PARTS:

- [new Garmin Nuvi 255W power button](#) (1)

Step 1 — Power Button



- Remove the barcode sticker at the bottom of the device.

Step 2



- Remove two 8.4 mm T5 screws from the bottom of the device.

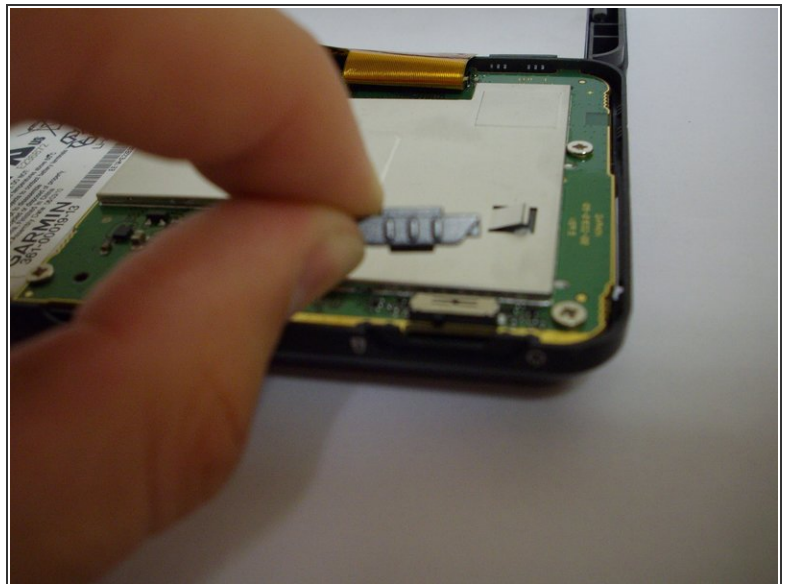
Step 3



- Using a plastic opening tool, carefully pry open the device.

⚠ Open the device carefully, making sure not to damage the gold ribbon cable that connects the screen to the motherboard.

Step 4



- Remove the power button.

To reassemble your device, follow these instructions in reverse order.

This document was last generated on 2019-07-09 05:52:14 PM.