



Samsung Galaxy Tab E 9.6 Wi-Fi Touchscreen und LCD Replacement

Austausch von Touchscreen und LCD am Samsung Galaxy Tab E 9.6

Written By: ian mdx

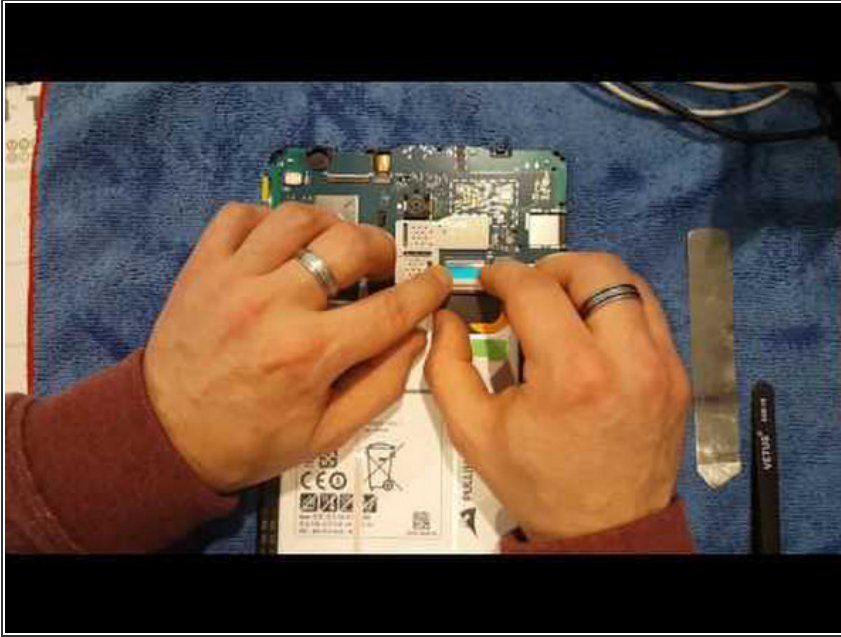




PARTS:

- [Galaxy Tab E 9.6 \(Wi-Fi\) Display Assembly](#) (1)
-

Step 1 — Touchscreen und LCD



- Insérer un commentaire.

This document was last generated on 2018-02-20 12:58:00 AM.