



# Samsung SCH-A310 Display Casing Replacement

This guide will give you step by step instructions on how to safely disassemble the phone's display casing to replace one of the screens.

Written By: Anthony Cisneros



This document was generated on 2019-11-08 01:18:31 PM (MST).

 **TOOLS:**

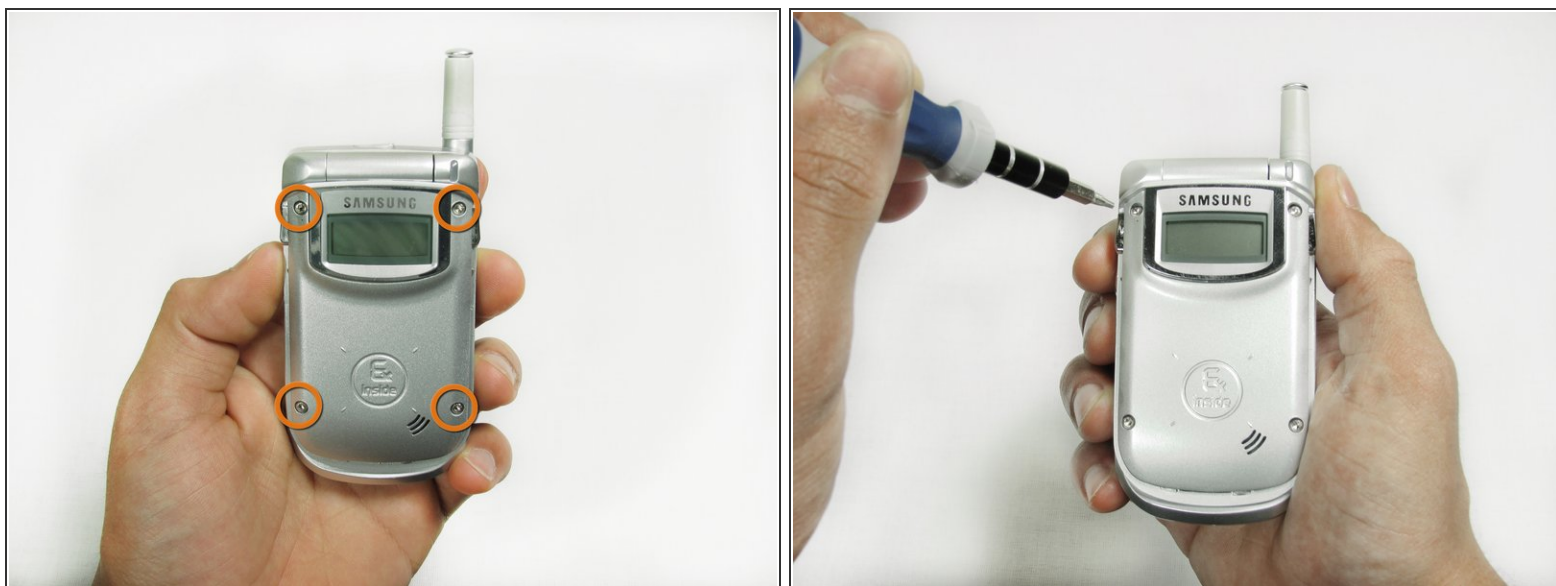
- [iFixit Opening Tools](#) (1)
  - [T6 Torx Screwdriver](#) (1)
-

## Step 1 — Display Casing



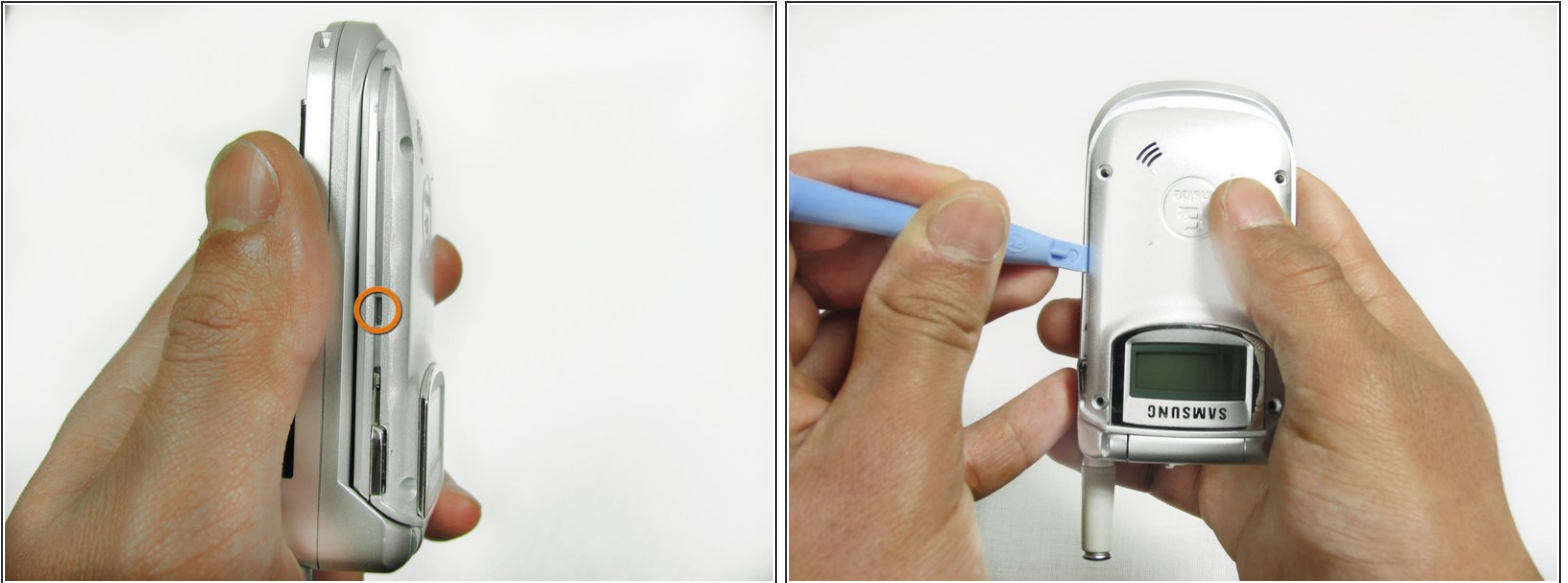
- With the phone upright and folded shut, locate the two silver tabs at the top of the screen.
  - Using one hand, pinch the two tabs inward, and use your other hand to slide the front cover of the screen off of the phone.
- i** Note: Do not apply too much of force. If you find it difficult to remove the front cover, try pinching the tabs in harder, and make sure you are sliding the front cover directly downward.

## Step 2



- Using the T6 Torx screwdriver, remove each of the 4mm screws located in the corners of the phone.
- 📌** Be sure to keep track of the little screws, since they can be lost easily.

### Step 3



- Locate the tabs on either side of the phone. Pull the outer case away from each tab with the plastic opening tool.

### Step 4



- Hold the phone upside-down.
  - Two plastic tabs are located under the lip of your phone. Use a plastic opening tool to pop the outer case away from the tabs.
- i** After the outside case is clear of the four tabs, removed it.

To replace one of the screens, follow the corresponding guide from this point on. To reassemble your device, follow these instructions in reverse order.