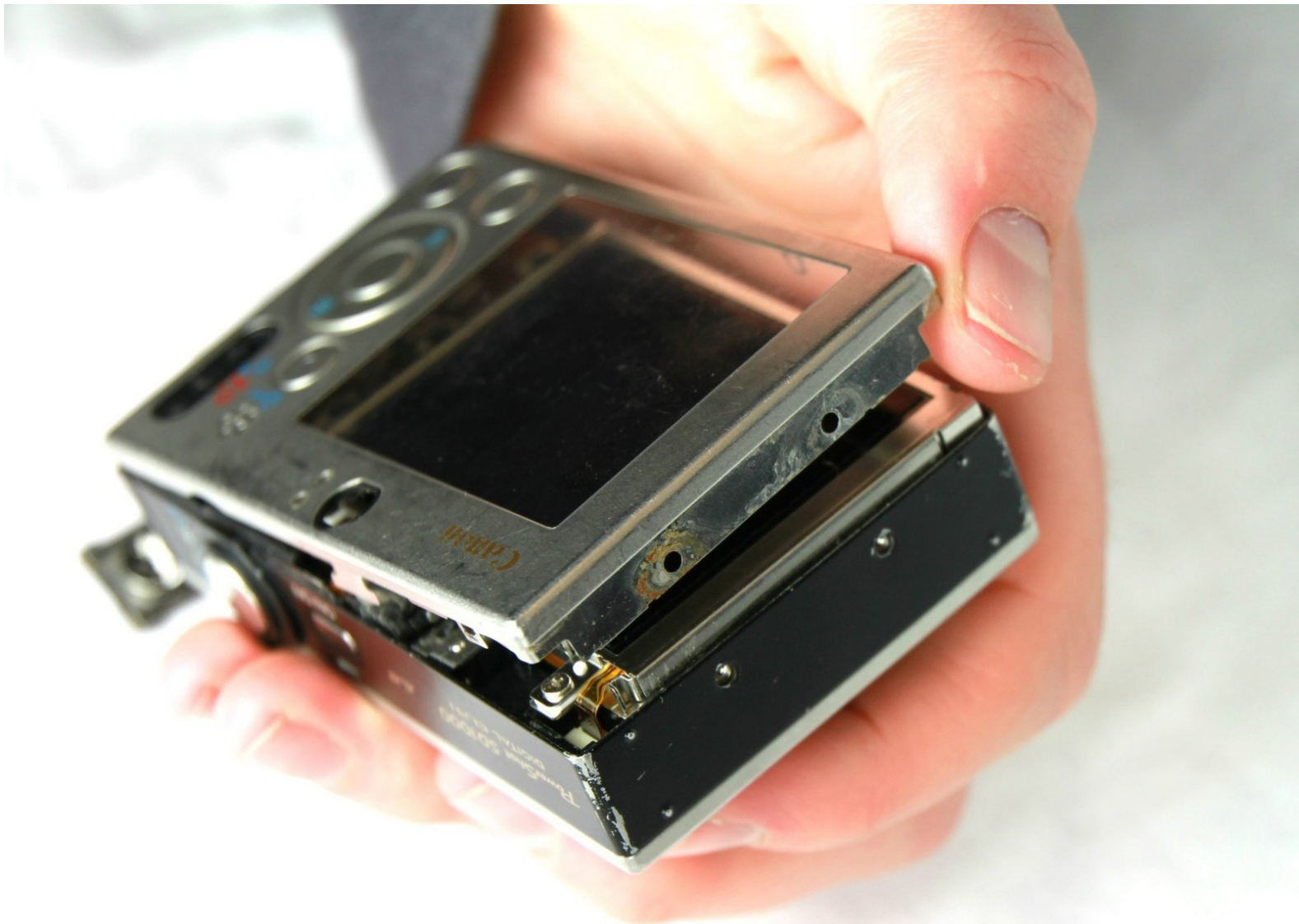




Canon PowerShot SD1000 Back Panel Replacement

Follow this guide to remove the back panel of the Canon PowerShot SD1000. This is necessary for most other repair guides from this device.

Written By: Phillip Phung



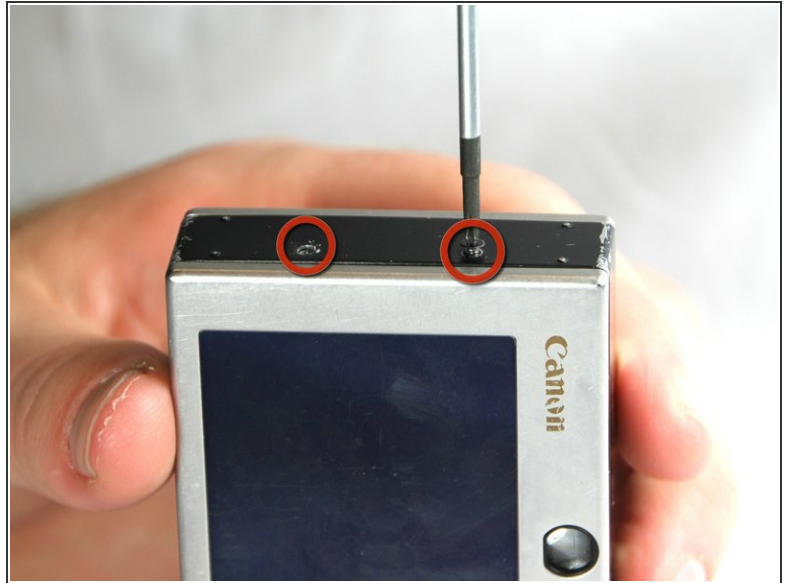
INTRODUCTION

The first step to replacing any camera parts is to remove the back panel. This only involves removing several small screws.

TOOLS:

- [Phillips #00 Screwdriver](#) (1)
-

Step 1 — Back Panel



- Remove the two screws from the side panel closest to the camera lens.

i Note: These screws are 2.9 mm long.

Step 2



- Remove the two screws from the camera bottom panel.

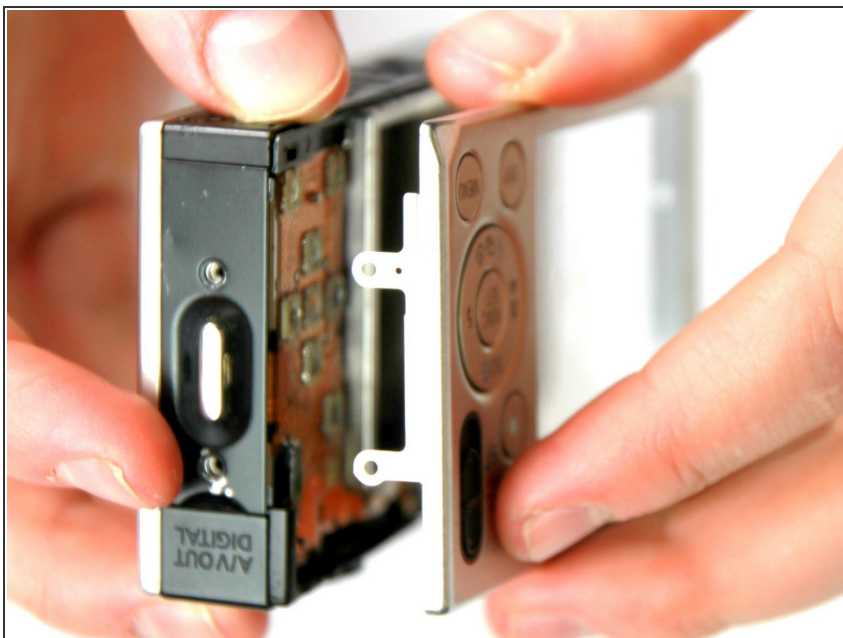
i Note: These screws are 2.9 mm long.

Step 3



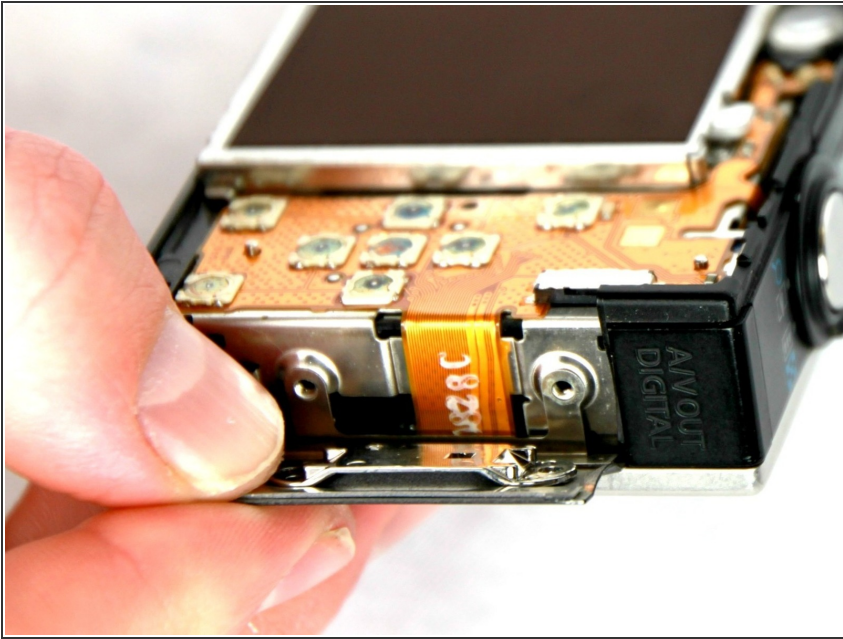
- Remove the 2 screws from the side panel farthest from the lens.
- ⓘ Note: These screws are 2.9 mm long.

Step 4



- Pull the back panel away from the camera body, starting at the end with the function buttons.

Step 5



- Remove the small cover panel and attached wrist strap mount.

To reassemble your device, follow these instructions in reverse order.

This document was last generated on 2019-07-11 02:08:23 AM.