



Sansa e260R Rear Case Replacement

Replace the Rear panel on your Sansa e260R

Written By: Casey Smith



 **TOOLS:**

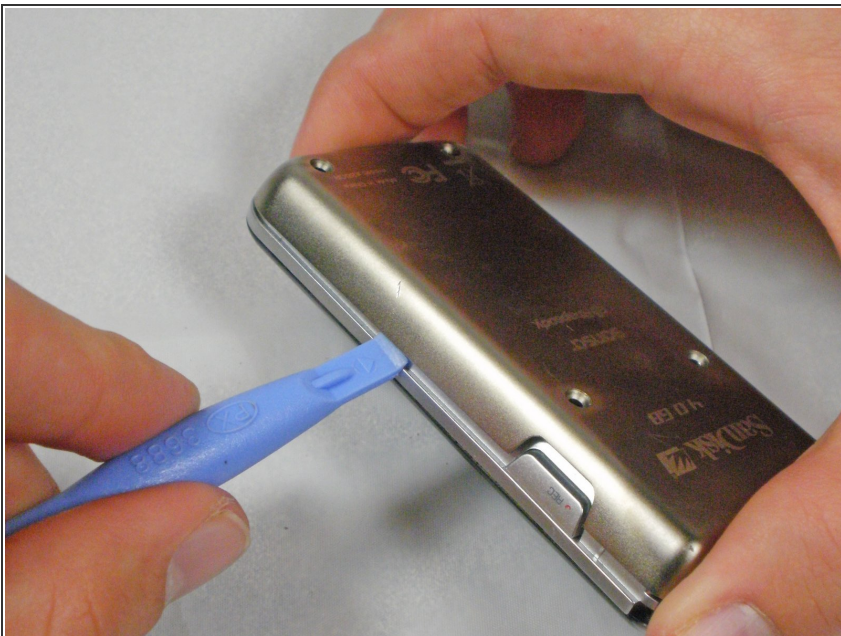
- [Phillips #00 Screwdriver](#) (1)
 - [iFixit Opening Tools](#) (1)
-

Step 1 — Rear Case



- ⓘ Before disassembling the device, make sure it is powered off.
- Remove the four 1.5mm screws on the back of the device.

Step 2



- Using a plastic opening tool, lift the metal backing from the front of the device.

Step 3



- Pull the rear panel off of the Sansa e260R.

To reassemble your device, follow these instructions in reverse order.