



PowerBook G4 Titanium Onyx Hard Drive Replacement

Written By: iRobot



INTRODUCTION

You can install hard drives up to 12.5mm thick.



TOOLS:

- [T8 Torx Screwdriver](#) (1)



PARTS:

- [120 GB 5400 RPM Western Digital ATA Hard Drive \(New\)](#) (1)
- [G4 Titanium Onyx Hard Drive Bracket](#) (1)

Step 1 — Lower Case



- Turn the G4 over.
- Remove the eight T8 Torx screws from the lower case.

Step 2



- Using your thumbs, slide the lower case away from you.
- ⓘ The lower case may stick in the front on a tab just above the center of the DVD drive. Be careful as you work the case off, or you may break the thin strip of plastic just above the drive.
- Lift the lower case off.

Step 3



- Your laptop should look approximately like this.

Step 4 — Airport Card



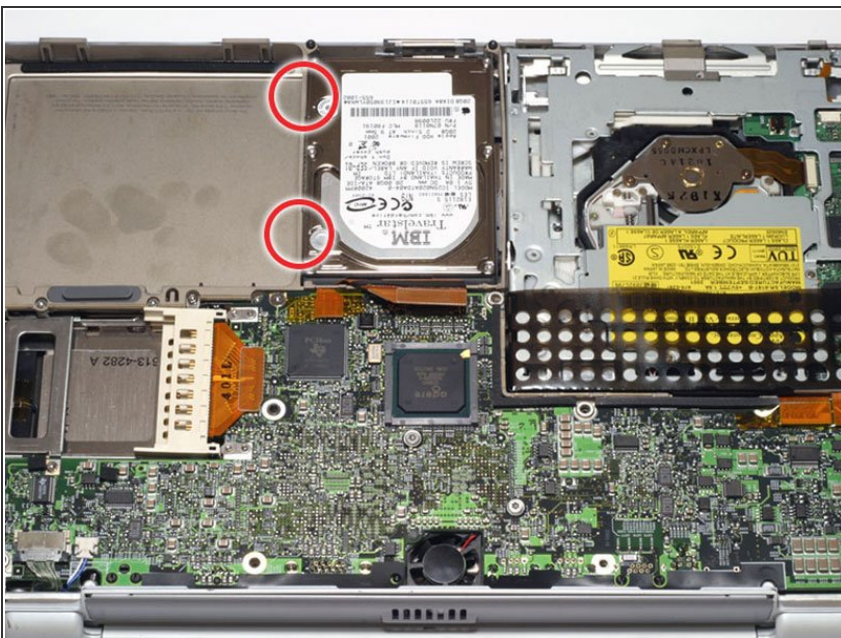
- ⓘ Skip this step if your computer does not have an Airport card.
- Firmly grasp the plastic tab attached to the Airport card and pull up and to the left.
- Disconnect the antenna cable from the left side of the Airport card.

Step 5 — Hard Drive



- Disconnect the hard drive ribbon from the logic board using a spudger or the tip of your finger, removing tape as necessary.

Step 6



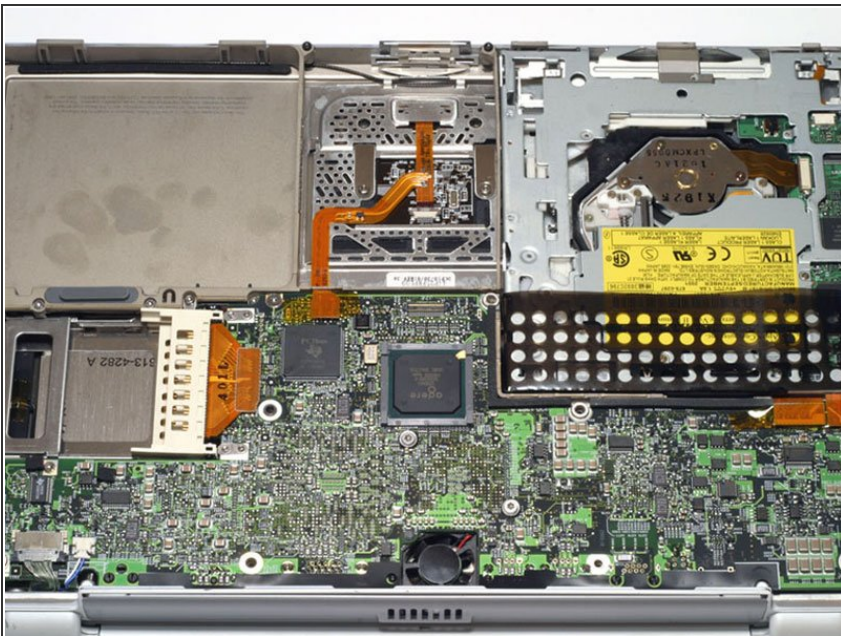
- To free the hard drive, remove the two T8 Torx screws from the right wall of the battery housing.

Step 7



- Remove the hard drive by gently grasping the orange ribbon cable and lifting the left edge up and out of the computer.
- ⓘ There are four rubber bumpers that fit over the hard drive screws. Ensure that these bumpers come out when you remove the hard drive.

Step 8



- Your laptop should look approximately like this.

Step 9 — Hard Drive



- Remove the two black plastic bumpers and two T8 Torx screws from the side of the hard drive.

Step 10



- Grasp the orange ribbon cable and disconnect it from the hard drive. If the connector is tight, gently rock it from side to side.
- ⚠ Be sure to pull evenly on both sides as uneven force may damage the hard drive pins and render your data inaccessible.
- ⓘ If you are installing a new hard drive, we have an [OS X install guide](#) to get you up and running.

To reassemble your device, follow these instructions in reverse order.