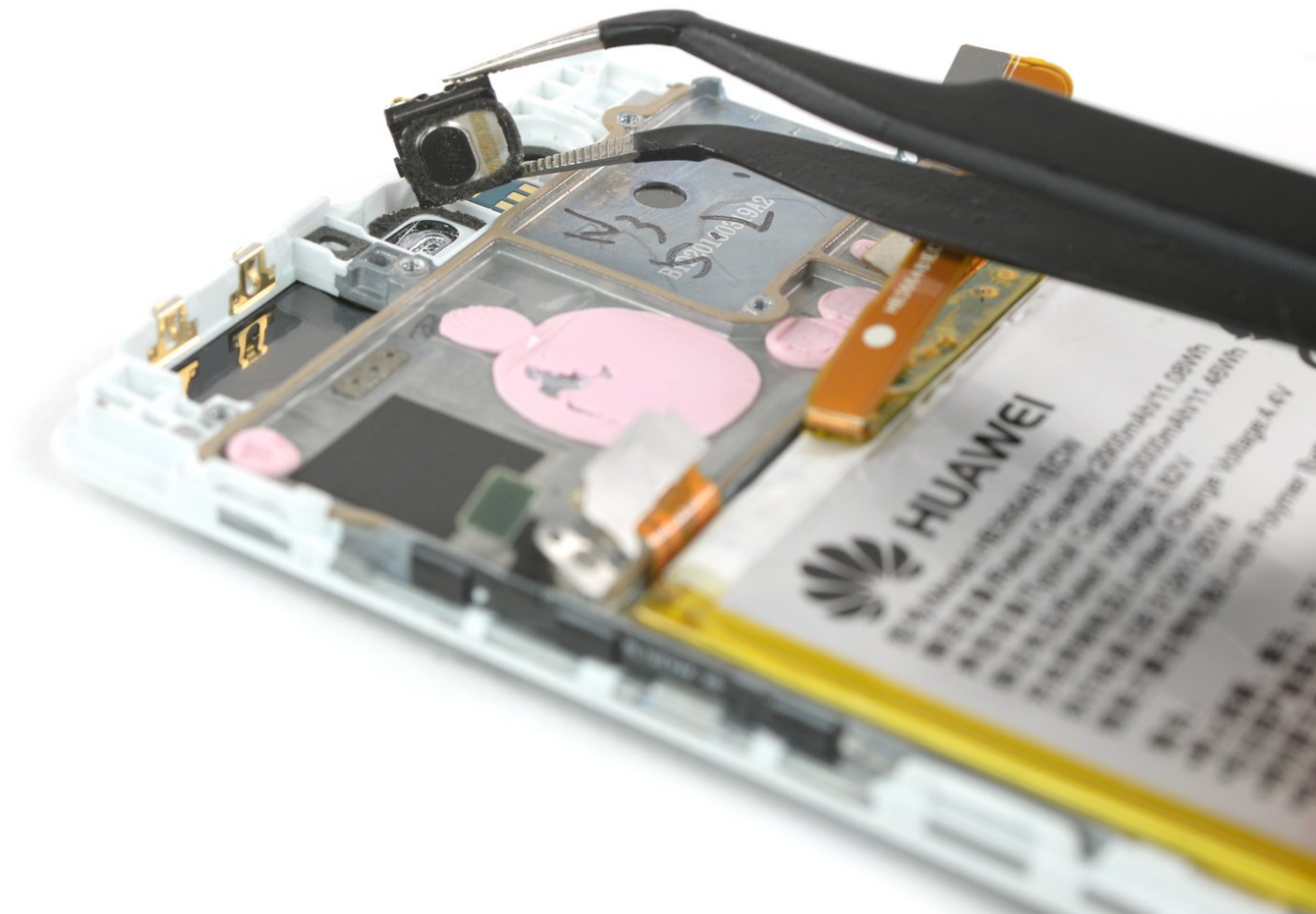




# Huawei P9 Earpiece Speaker Replacement

Written By: Dominik Schnabelrauch



 **TOOLS:**

- [SIM Card Eject Tool](#) (1)
  - [Spudger](#) (1)
  - [Tweezers - Pro/ESD/Angled](#) (1)
  - [Phillips #000 Screwdriver](#) (1)
  - [iSclack](#) (1)
  - [P2 Pentalobe Screwdriver iPhone](#) (1)
-

## Step 1 — Back Cover



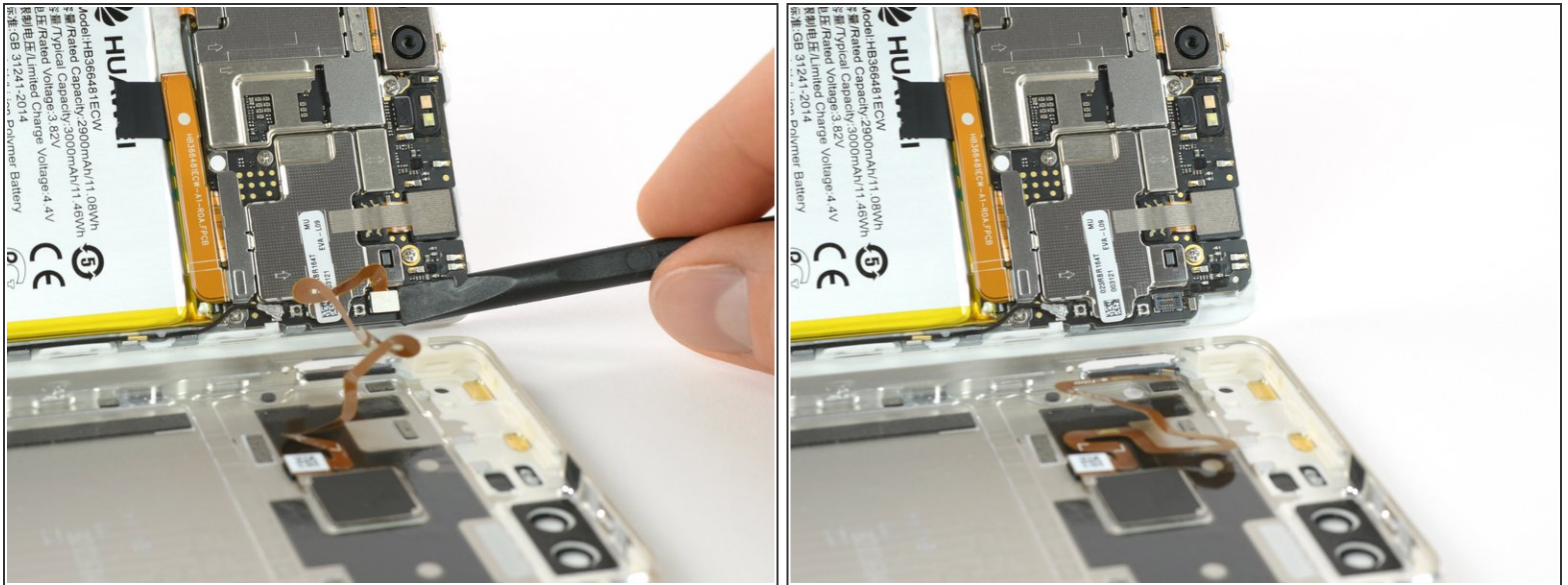
- First switch off your phone and remove the SIM card tray.
- Unscrew the two Pentalobe P2 screws located at the bottom next to the device's USB C port.
- ⓘ If the screen is cracked you might want to use some tape to protect your eyes from glass shreds and get a better grip to open the phone.

## Step 2



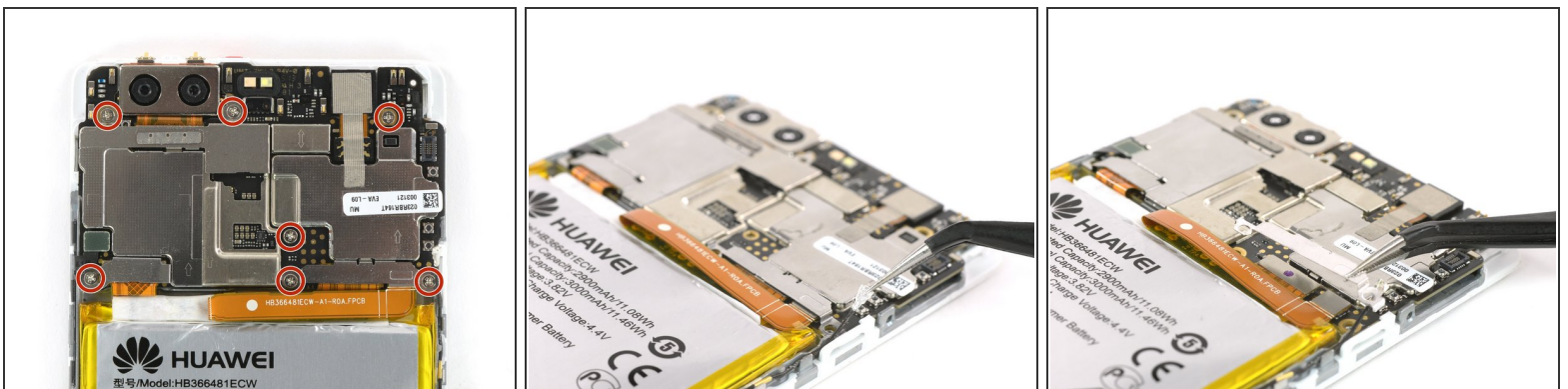
- ⚠** Avoid to lift only the display instead of the whole phone assembly as doing so may cause damage to the screen.
- Use an iSclack or a suction handle to separate the phone assembly from the rear panel.
- i** In case you can't manage to lift the phone assembly out of the rear panel you can insert the pointed end of a spudger in the headphone jack opening and press the phone assembly upwards until you create a gap between assembly and rear panel. Then use the spudger to lever the phone assembly out of the panel.
- ⚠** Don't remove the rear panel completely yet. There is a cable connected to it! It is running from the finger print sensor to the display unit.

### Step 3 — Fingerprint sensor



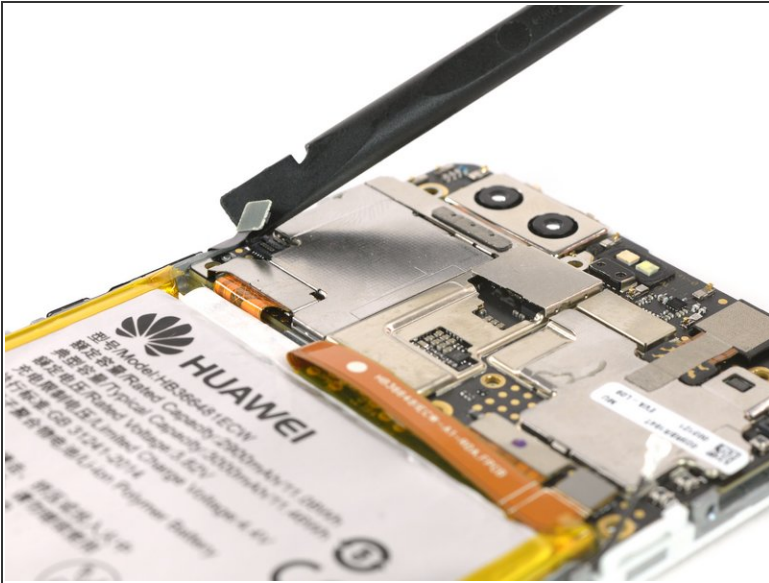
- Disconnect the fingerprint sensor using a spudger.

### Step 4 — Earpiece Speaker



- Loosen the seven Phillips #00 screws on the motherboard.
  - ⓘ On one of them might be a sticker. Remove it.
- Unplug the antenna cable.
- The metal plate covering the battery connector has two little hooks on each side. Use a tweezer to free them and unhinge the plate towards the top.

## Step 5



- Disconnect the volume button cable and the display cable ...

## Step 6



- ... as well as the battery connector and the cable running to the daughter board.

## Step 7



- Now you can lift out the motherboard to access the earpiece speaker.
  - ⚠ Be careful with both cameras since they are still connected to the motherboard.
- The earpiece speaker is fixed with an adhesive foam gasket.

To reassemble your device, follow these instructions in reverse order.