



# Garmin StreetPilot c320 Rear Case Assembly Replacement

Replace the Rear Case Assembly in your Garmin StreetPilot c320.

Written By: Andrew Burman



---

## INTRODUCTION

Before you begin disassembling the device, be sure the power is off.

---

### TOOLS:

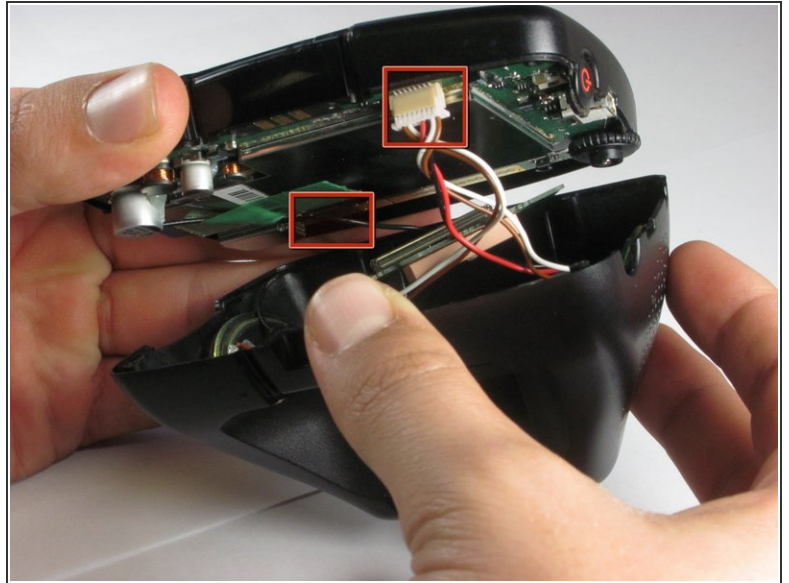
- [Phillips #00 Screwdriver](#) (1)
  - [iFixit Opening Tools](#) (1)
-

## Step 1 — Rear Case Assembly



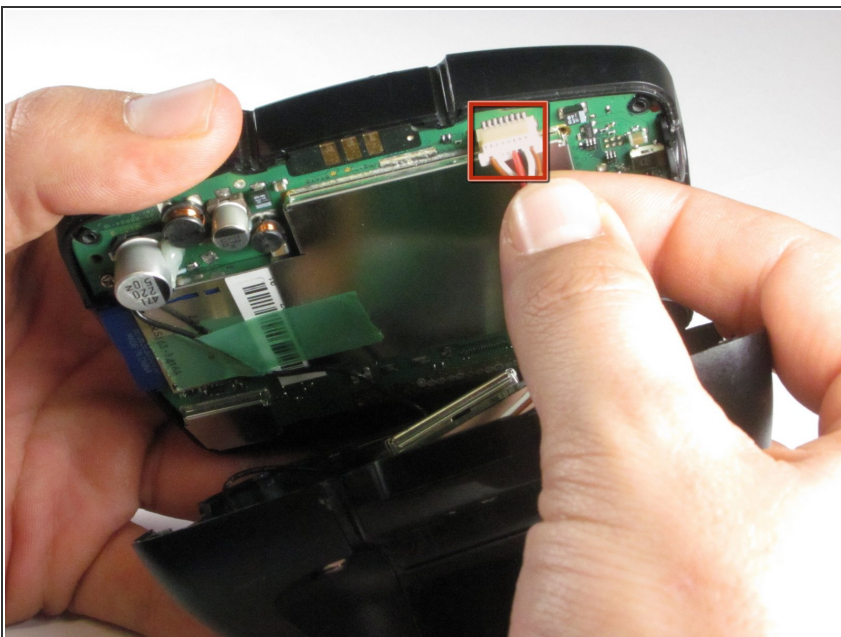
- Wedge a plastic opening tool in between the outer frame and the rear panel assembly.
  - Pry the outer frame off the perimeter of the rear panel assembly.
- i** The cover will easily pop off.

## Step 2



- Remove the four #00 Phillips screws securing the front case assembly to the rear case assembly.
  - Carefully lift, but do not completely separate, the front case assembly from the rear case assembly.
- ⚠ Be extremely cautious when separating both halves, as the rear case assembly is still attached to the front case assembly via a few connectors.

## Step 3



- Gently pull the battery cable connector from its socket on the motherboard.
- The second connector can remain attached to the motherboard, but be careful not to break the connector while handling both halves of the device.

To reassemble your device, follow these instructions in reverse order.