



Samsung SCH-A310 Outside Display Replacement

This guide will give you step by step instructions on replacing the outside display.

Written By: Anthony Cisneros



 **TOOLS:**

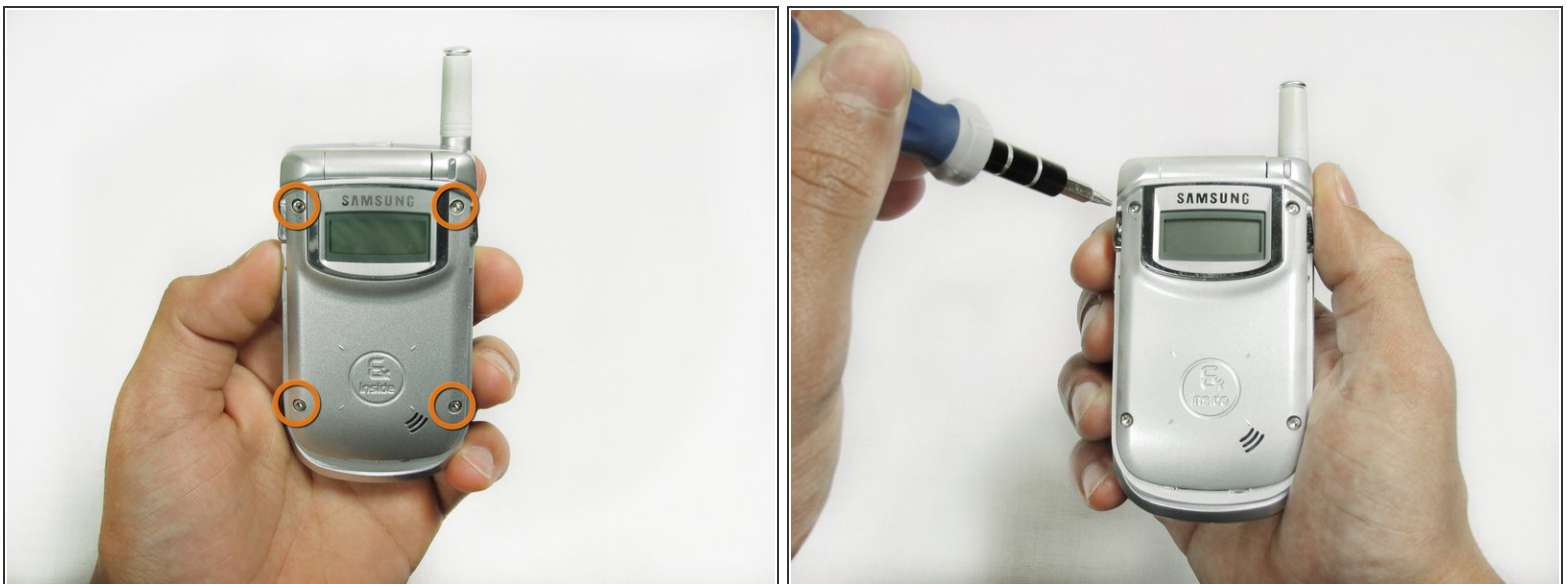
- [T6 Torx Screwdriver](#) (1)
 - [iFixit Opening Tools](#) (1)
-

Step 1 — Display Casing



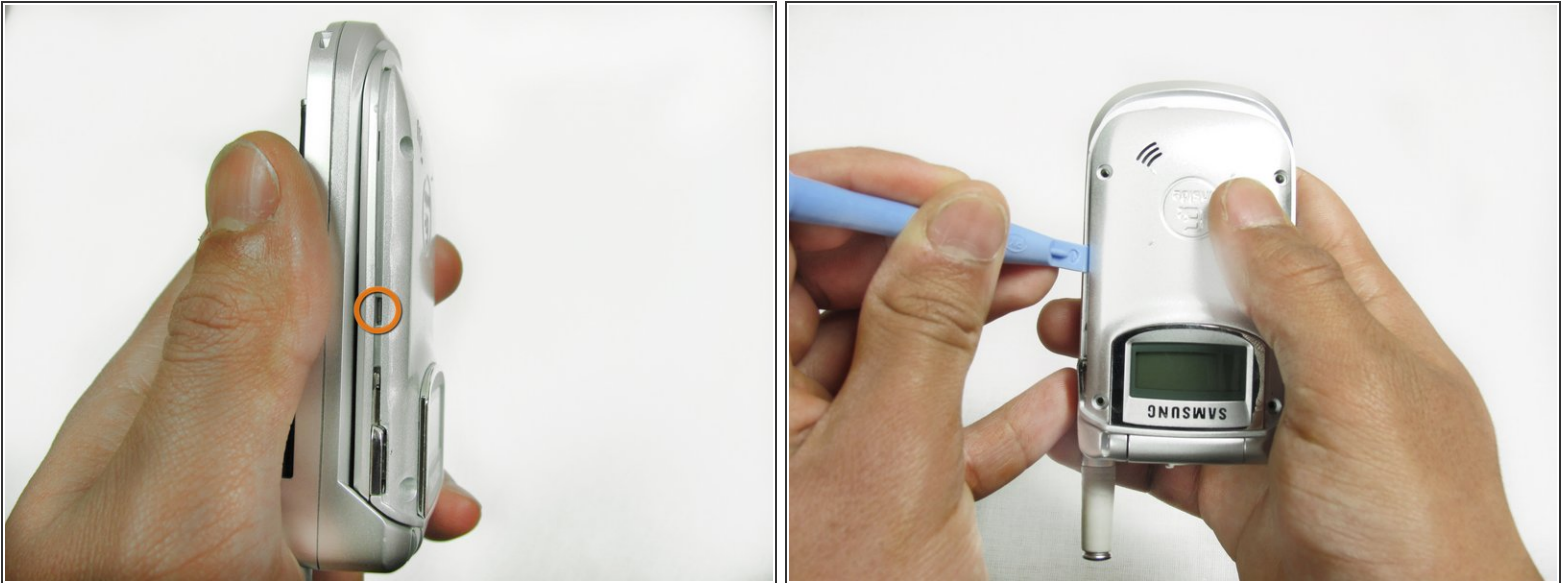
- With the phone upright and folded shut, locate the two silver tabs at the top of the screen.
 - Using one hand, pinch the two tabs inward, and use your other hand to slide the front cover of the screen off of the phone.
- i** Note: Do not apply too much of force. If you find it difficult to remove the front cover, try pinching the tabs in harder, and make sure you are sliding the front cover directly downward.

Step 2



- Using the T6 Torx screwdriver, remove each of the 4mm screws located in the corners of the phone.
- 📌** Be sure to keep track of the little screws, since they can be lost easily.

Step 3



- Locate the tabs on either side of the phone. Pull the outer case away from each tab with the plastic opening tool.

Step 4



- Hold the phone upside-down.
- Two plastic tabs are located under the lip of your phone. Use a plastic opening tool to pop the outer case away from the tabs.
- ⓘ After the outside case is clear of the four tabs, removed it.

Step 5 — Outside Display



- With the phone upright, locate the small piece of electrical tape on the right side of the screen. Remove it and place it where you won't lose it.
- Slip the plastic tool behind the outside display where the tape used to be. Peel away the screen from its white backing.
- Continue to peel away the screen until it becomes fully detached. Attach the new screen.

To reassemble your device, follow these instructions in reverse order.