



# Sony M-430 Microcassette-Corder Cassette Lid Replacement

Installing the cassette compartment lid of the Sony M-430 Microcassette-Corder.

Written By: Scott



---

## INTRODUCTION

Following this guides shows you how to remove the cassette lid from the device. Removing the cassette lid allows you to install a new one and enables you to remove the mechanism deck

---

### TOOLS:

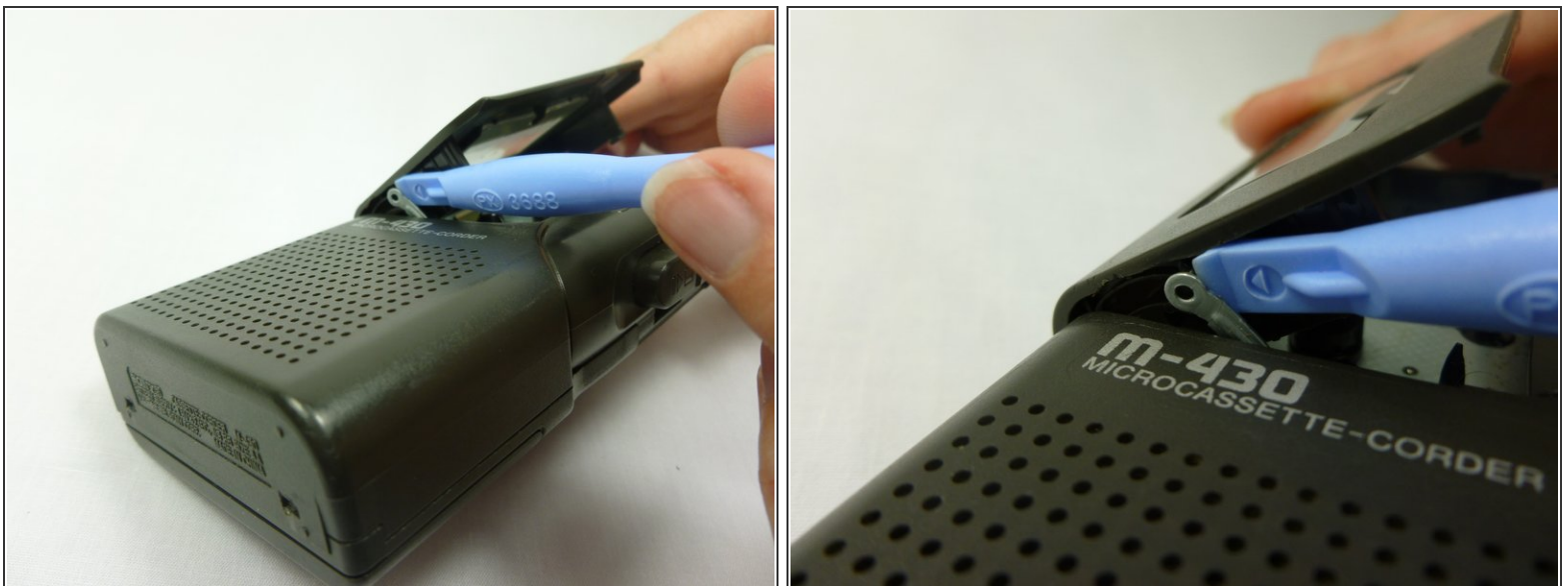
- [iFixit Opening Tools](#) (1)
  - [Spudger](#) (1)
-

## Step 1 — Cassette Lid



- Using a spudger, apply pressure towards the back corner of the cassette compartment to the plastic tab directly behind the gold cone.
- Pushing the tab allows the hinge to be separated from the body of the device.
- ⓘ The third picture shows the what the tab looks like when the device is disassembled, and illustrates the direction to apply pressure.

## Step 2



- Next, use a plastic opening tool to pull the metal latch towards the speaker.
- The latch should be clear of the slot in the cassette lid.
- ⚠ Be careful not to bend the latch too far, as it may warp.

### Step 3



- Carefully lift the cassette lid, making sure the tab and latch are free from connection.

To reassemble your device, follow these instructions in reverse order.

This document was last generated on 2019-08-02 09:12:18 PM.