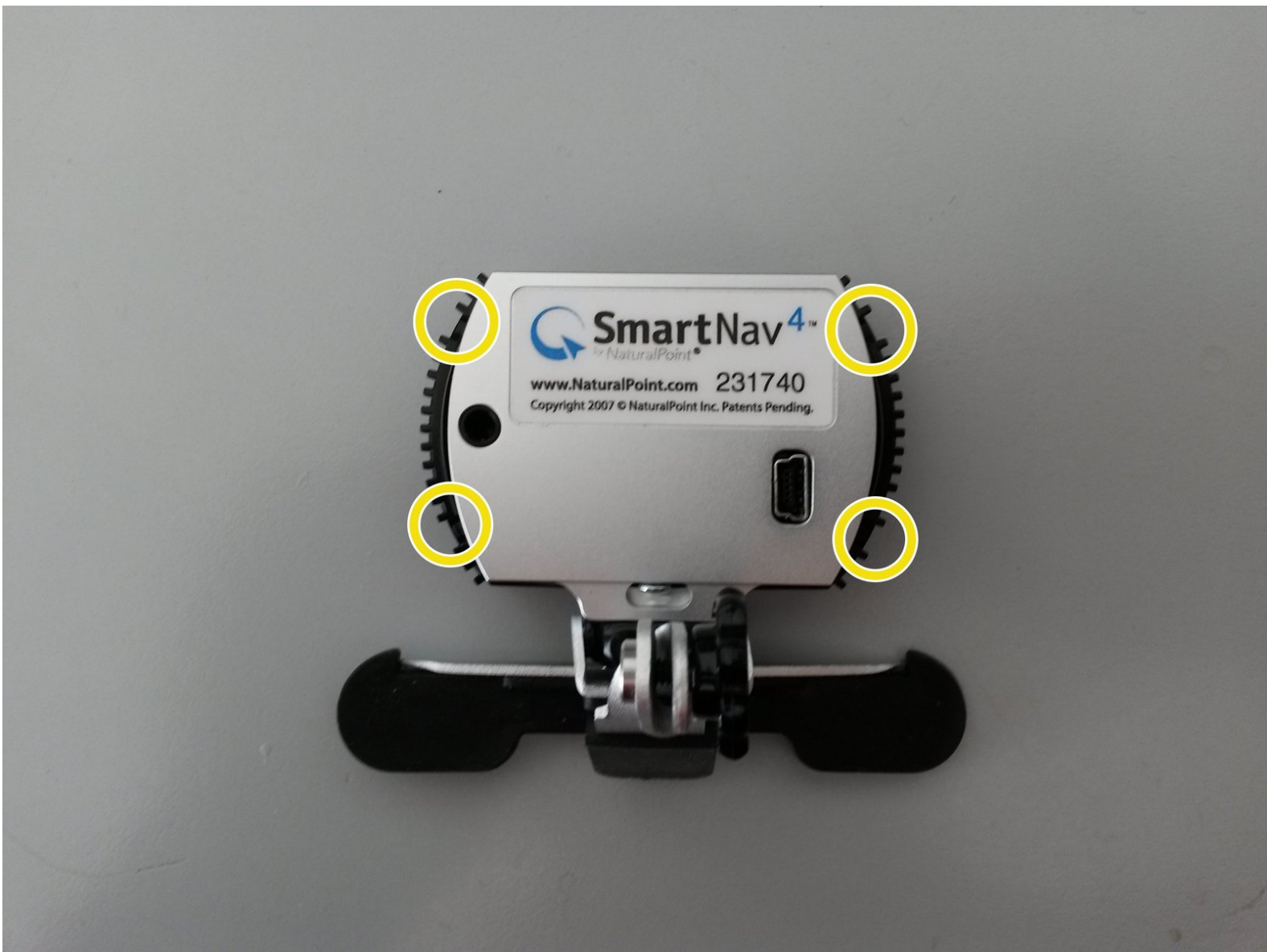




SmartNav 4 false contact repair

When the unit shows erratic behavior or the device isn't installing programs properly, you may look for a shortcut between it's internal components.

Written By: Stefano Ficacci



 **TOOLS:**

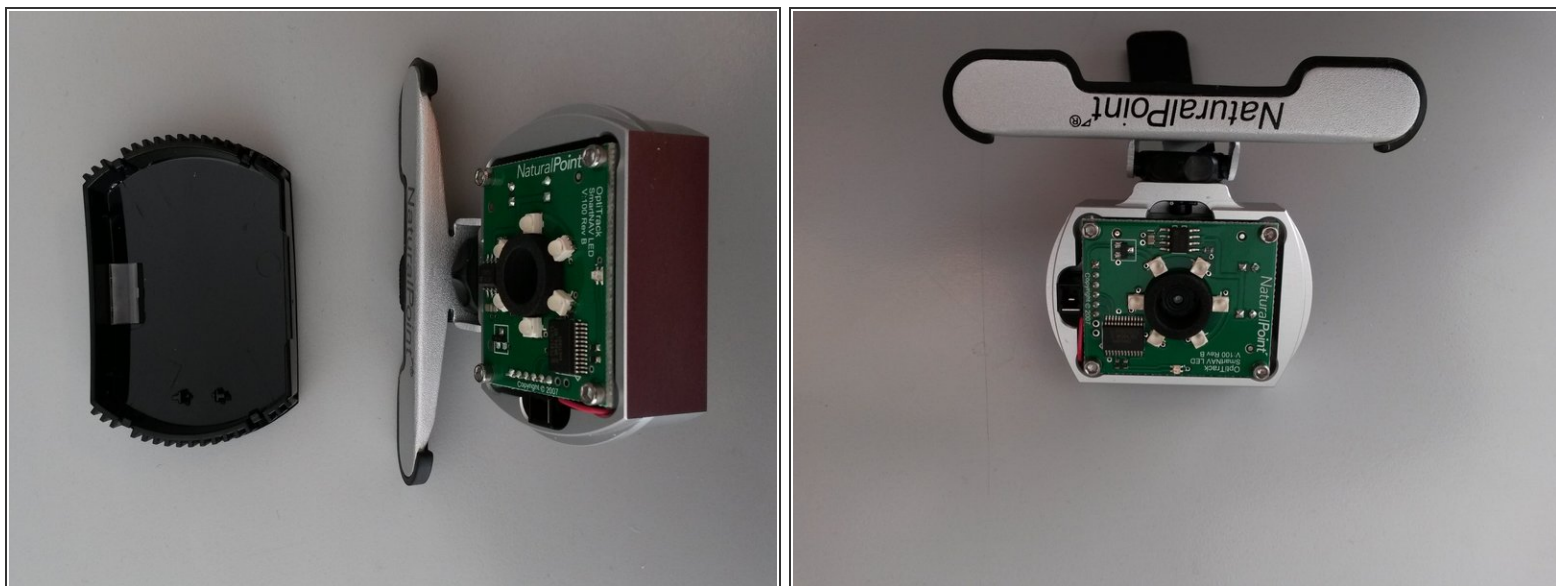
- Flathead 3/32" or 2.5 mm Screwdriver (1)
 - 5/64" Allen Wrench (1)
-

Step 1 — Device disassembly



- Gently open the four plastic tongues with a small slotted screwdriver, you need to keep the black and silver plastic gently pulled apart.

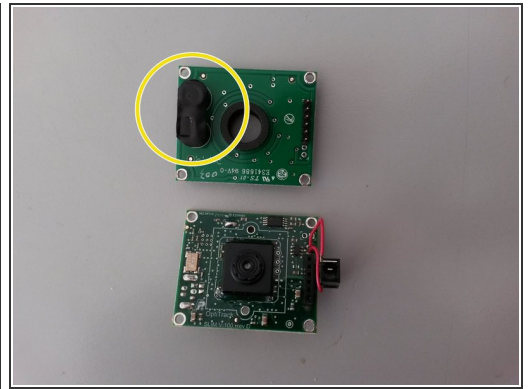
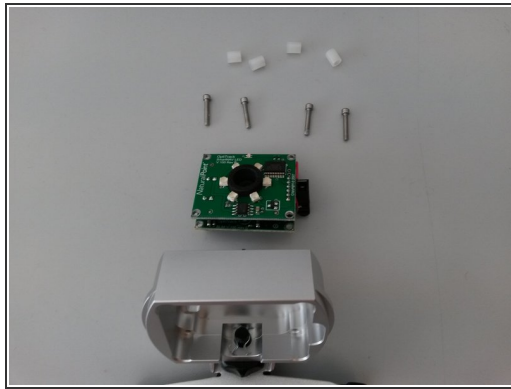
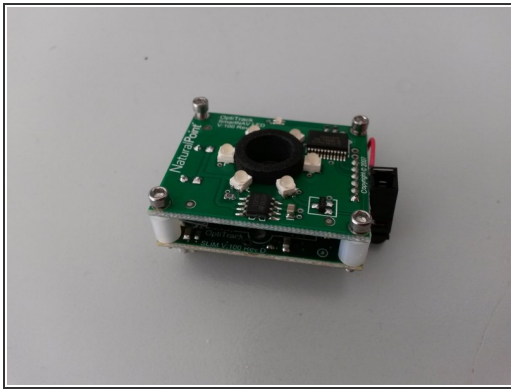
Step 2



- Once separated, there are four hex screws to be removed.

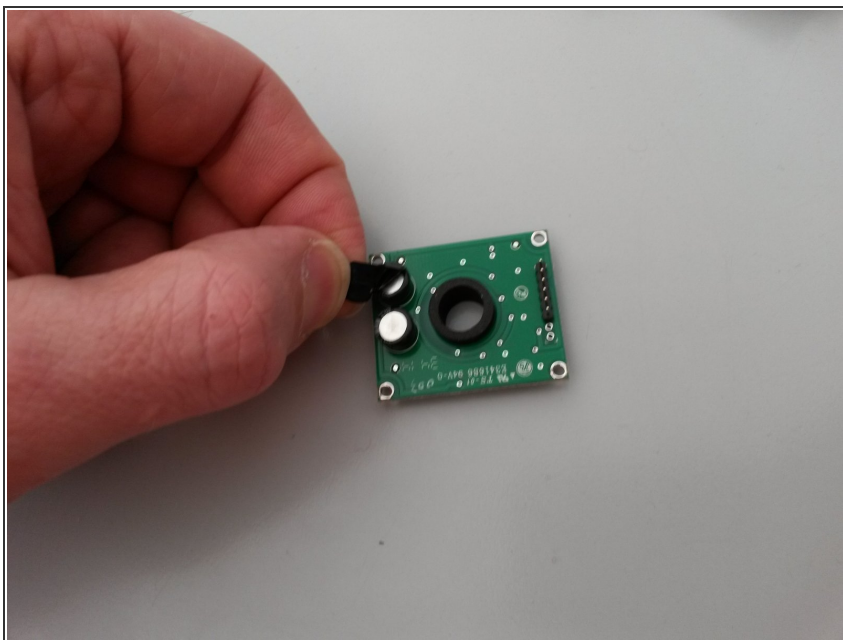
i I guess the size is 5/64" but I've used a 2 mm before...

Step 3



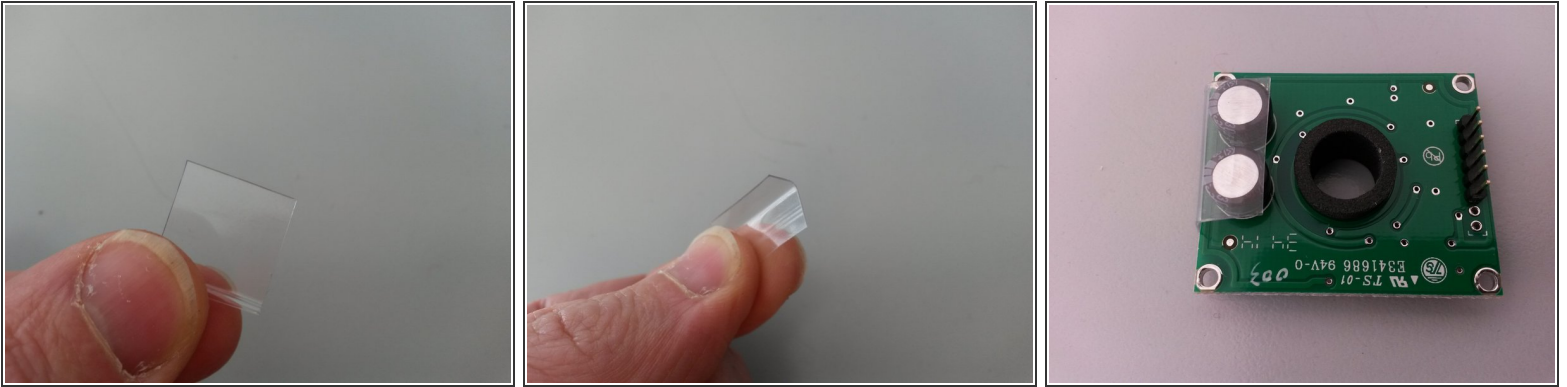
- Remove and separate the components
- ⓘ The problem is located in the black film between the boards which is clearly pinched through

Step 4



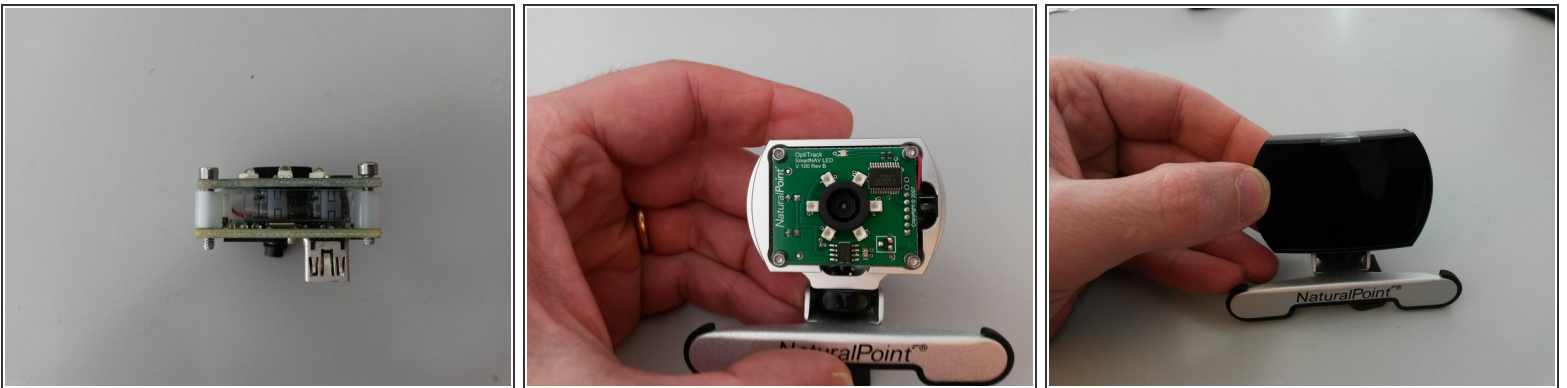
- Remove the adhesive, if present.

Step 5



- Prepare a new divider. I got this piece from a 0.4 mm rigid plastic.
 - ⓘ I folded the plastic to 90°
- I've placed and dimensioned the plastic in order to fit the position in the picture.

Step 6



- That's all folks! Next steps would be to re-assemble it as it was before disassembly.

To re-assemble your device, follow the steps in reverse order.

This document was last generated on 2019-07-23 09:07:58 AM.