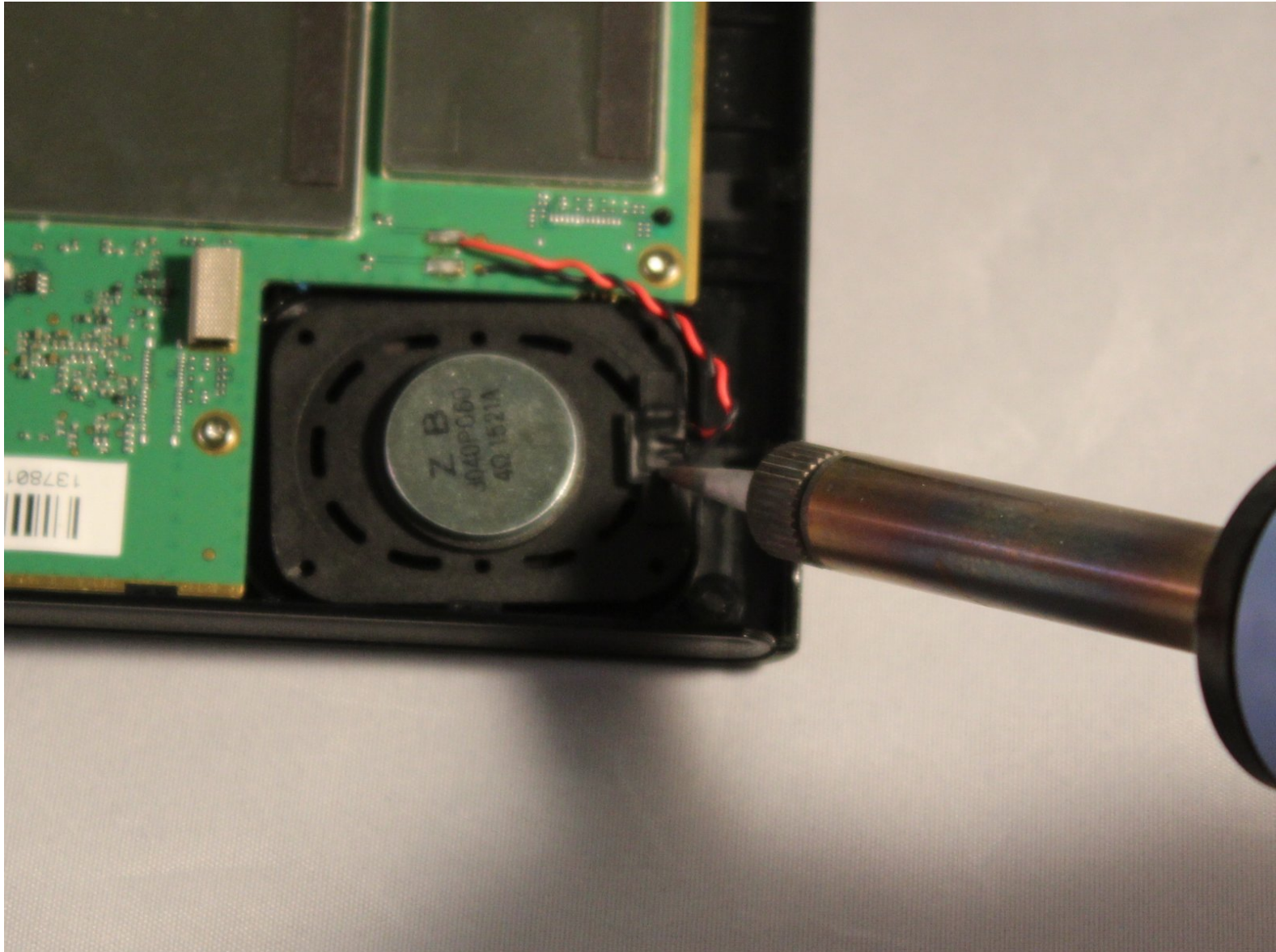




# Garmin nuviCam LMTHD Speaker Replacement

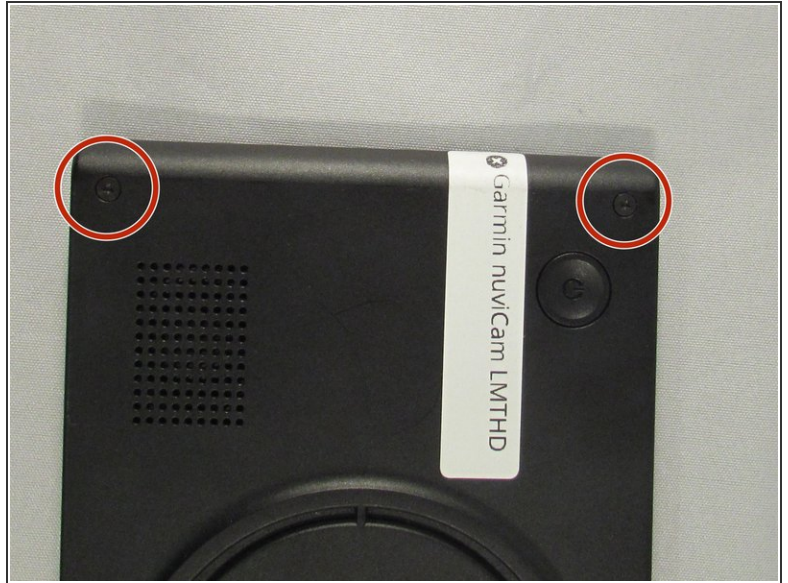
Written By: Riki Wippel



 **TOOLS:**

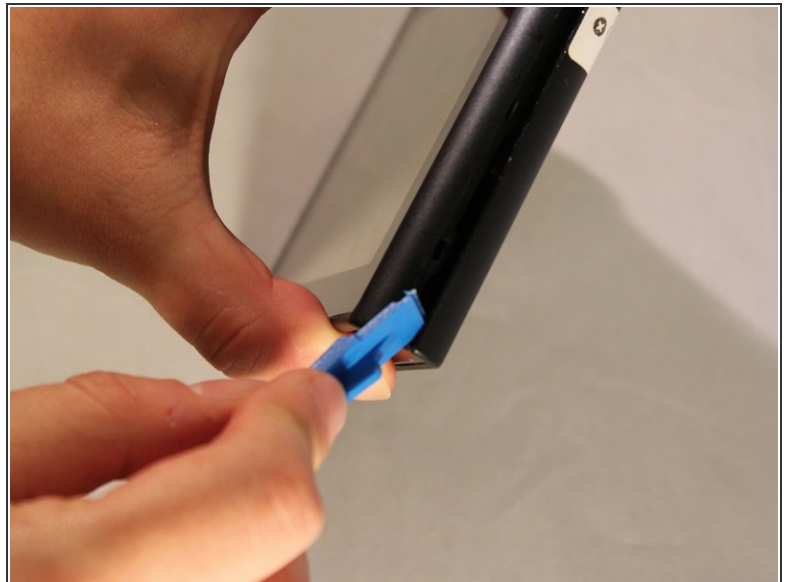
- [T6 Torx Screwdriver](#) (1)
  - [iFixit Opening Tools](#) (1)
-

## Step 1 — Screen



- Remove the four 6.9 mm black screws using the T6 screw bit.

## Step 2



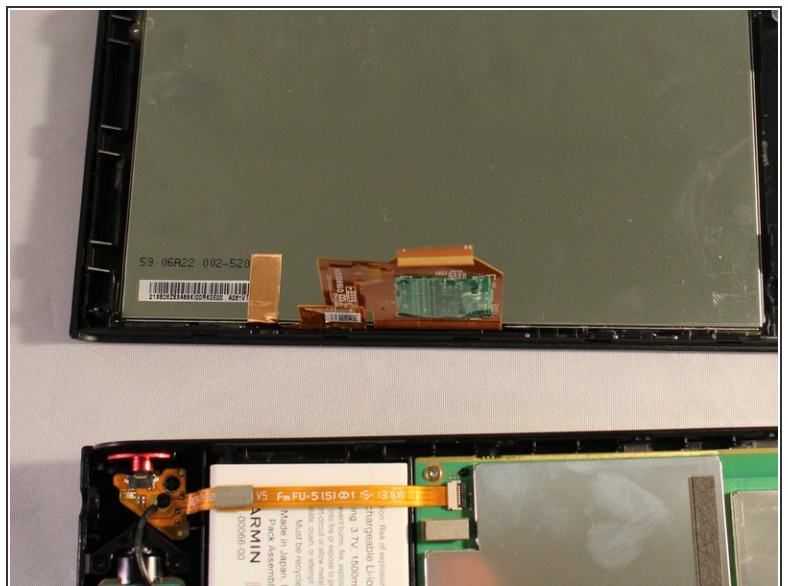
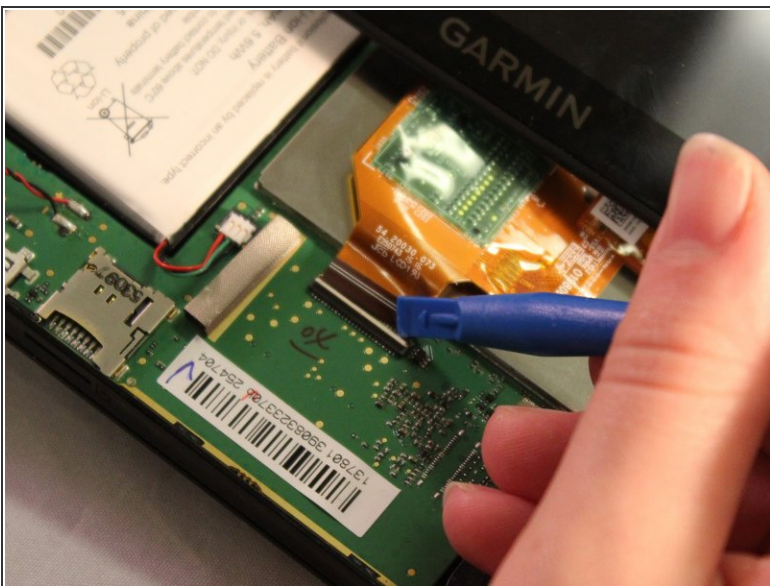
- Pry the device open using a plastic opening tool.
- We suggest starting from the dash camera side for easier opening
- ⓘ You may have to use a little force, the screen is hard to remove.

### Step 3



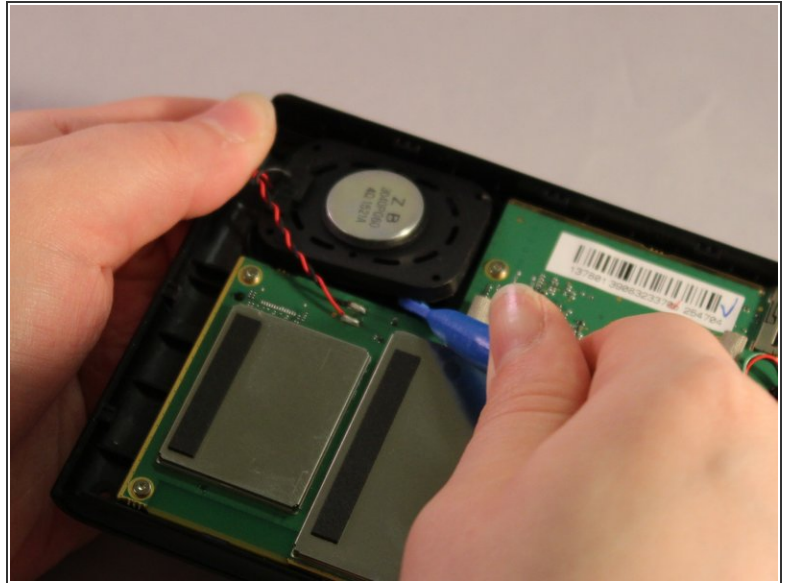
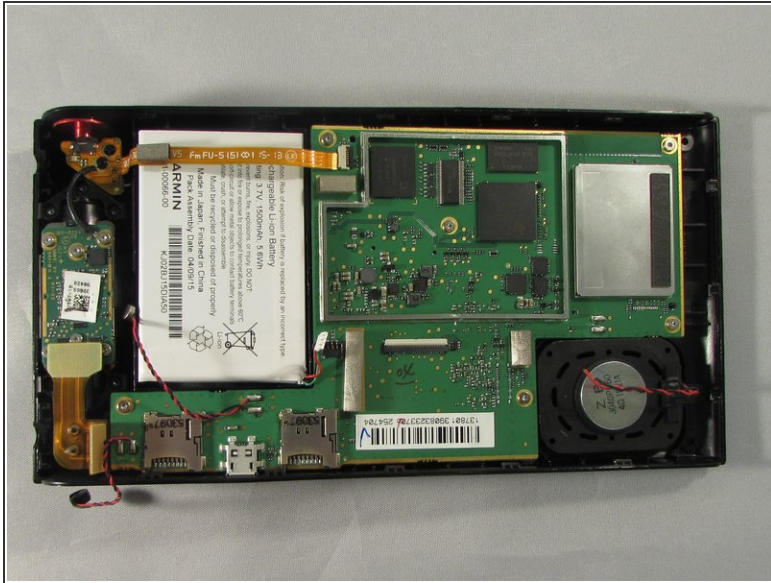
- Disconnect the black and red wire from the screen.

### Step 4



- Disconnect the orange strip by flipping up the connector with a plastic opening tool and sliding the cable out.

## Step 5 — Speaker



- Locate the speaker in the corner opposite of the dashcam.
- Pry speaker out of device using a plastic opening tool.

To reassemble your device, follow these instructions in reverse order.