



Tea Kettle Switch Replacement

It is not an unusual problem: the switch of your kettle pops out of its container and you're not able to put on your kettle anymore.

Written By: Anniek Moll



 **TOOLS:**

- [Phillips #2 Screwdriver](#) (1)
-

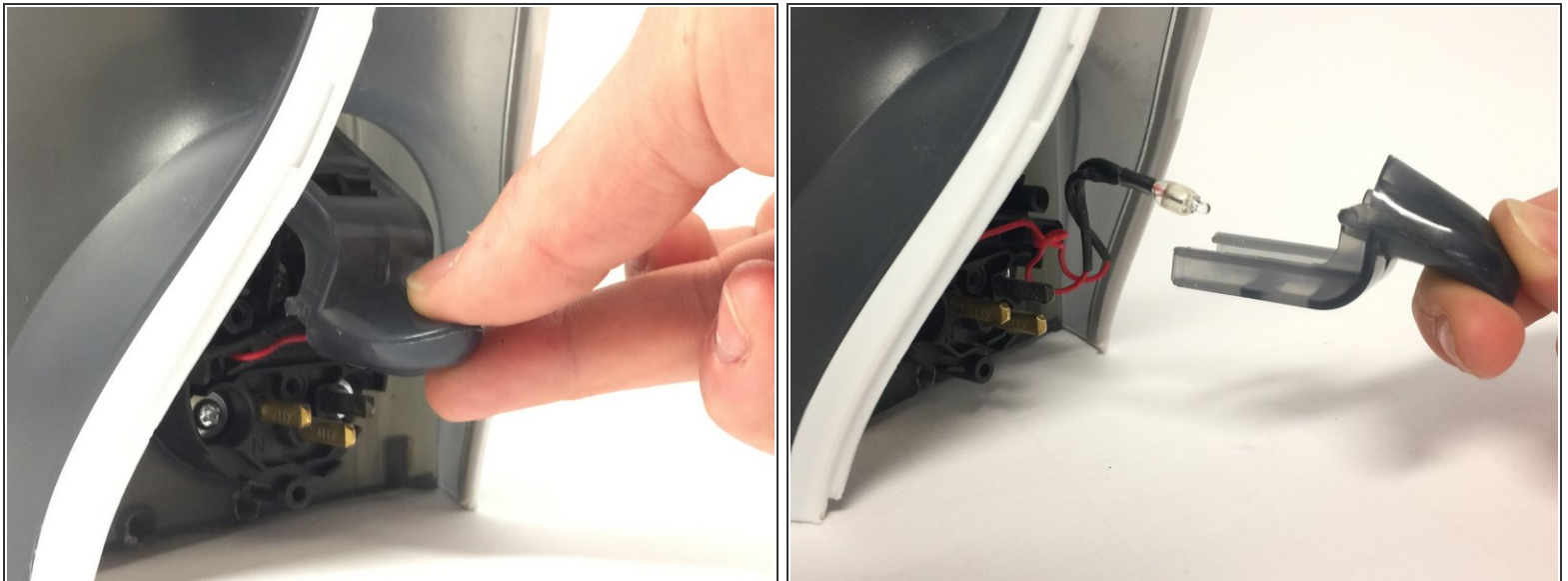
Step 1 — Switch



⚠ Before you start: disconnect the device from power

- Unscrew the bottom screws (2x)
- Unscrew the top screws (2x)
- Take off the handle part

Step 2



- Pull out the switch

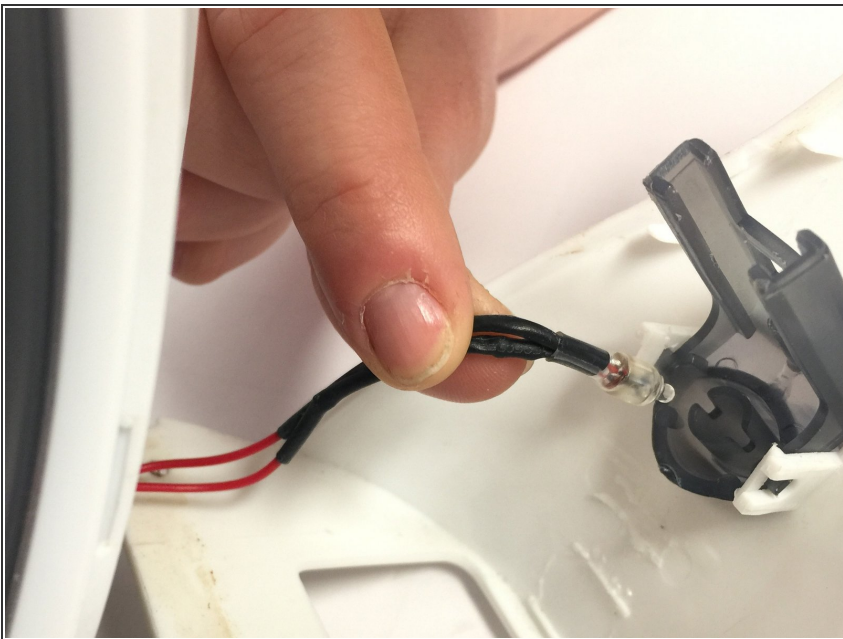
⚠ it is possible you pull too hard and take out another part and the spring that are positioned behind the switch.

Step 3



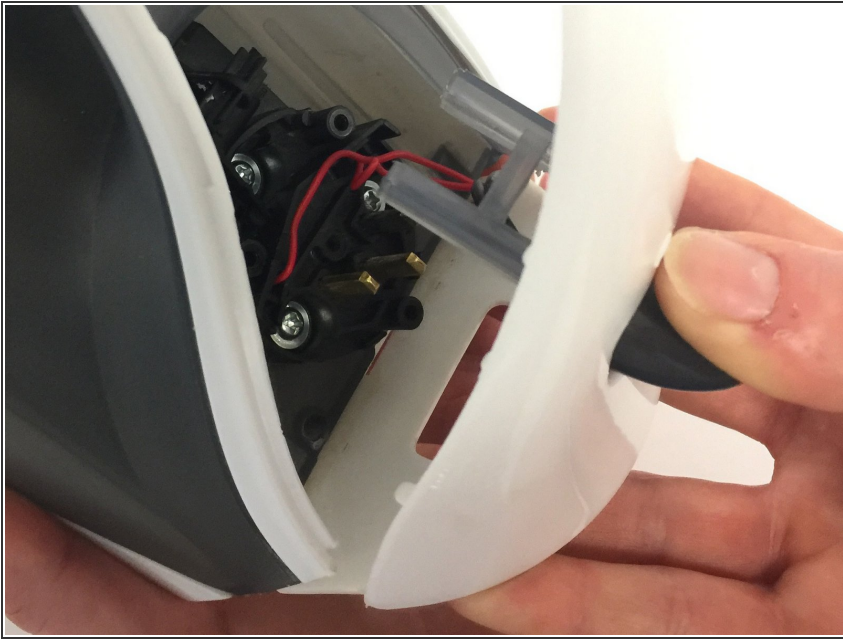
- Click the switch back into the handle part

Step 4



- Put the light back into the switch
- ⚠ This might take some extra attention, a precise work.

Step 5



- Put back the handle part on the frame

Step 6



- Plug in the kettle
- Put down the switch to check if it works again

To reassemble your device, follow these instructions in reverse order.