



Razer Naga Epic Chroma Disassembly

This guide will show how to safely open the plastic casing for the Razer Naga Epic Chroma gaming mouse. This is a prerequisite guide only.

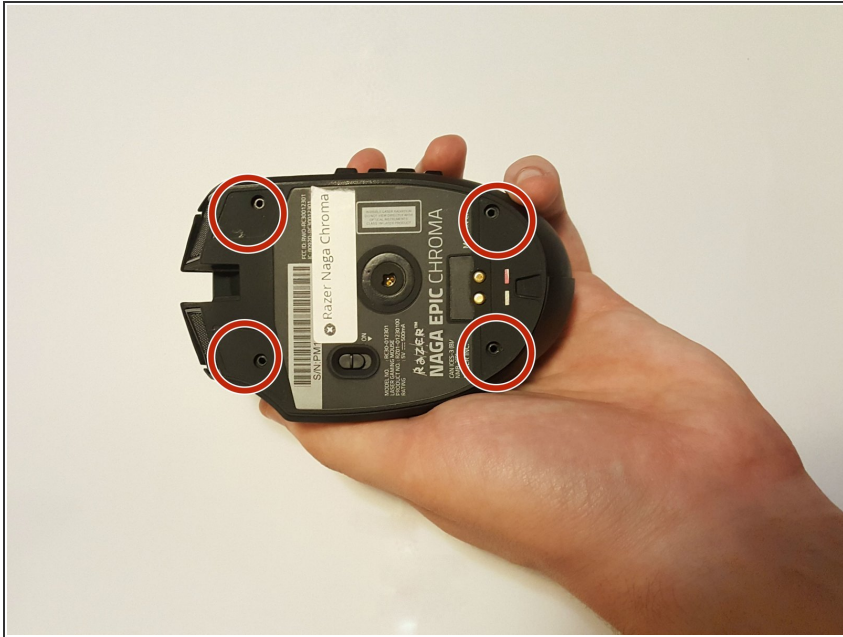
Written By: Jordan Morgan



 **TOOLS:**

- Spudger (1)
 - Phillips #00 Screwdriver (1)
-

Step 1 — Razer Naga Epic Chroma Disassembly



- Remove the teflon tape from the bottom of the mouse with a spudger.

Step 2



- Remove the four screws with the Phillips head #00 screwdriver.

Step 3



- Gently pull on the top plastic plate of the device and carefully unplug the white cord from the circuit board.

Step 4



- Gently pull up on the two side plastic plates.

To reassemble your device, follow these instructions in reverse order.