



HTC OPM9200 Battery Replacement

Replace the battery in your HTC OPM9200.

Written By: Steve Gilland



INTRODUCTION

Bring your device back from the dead after a failed battery sends it to an early grave.

TOOLS:

- [iFixit Opening Tools](#) (1)
 - [T4 Torx Screwdriver](#) (1)
 - [Phillips #00 Screwdriver](#) (1)
-

Step 1 — Backplate Removal Prereq



⚠ Before you proceed, discharge your device battery below 25%. A charged lithium-ion battery can catch fire and/or explode if accidentally punctured.

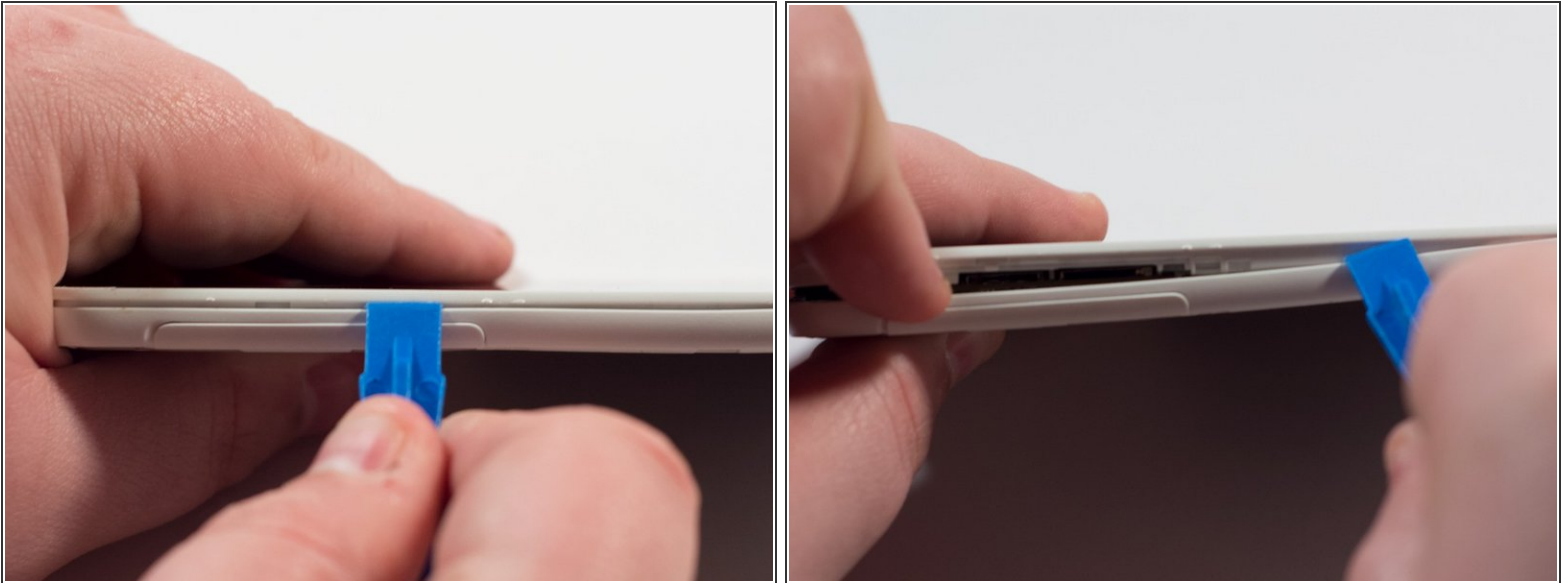
- Power off the device.
- Locate the SD Card/SIM Card cover flap on the left side of the device.
- Upon opening the cover flap you will find slots for SD Card and the SIM Card. Carefully remove these items if your device has them and set them aside.
- Lift on the back cover to begin the removal process. Continue removing the back cover by working along the edge. Once removed set aside the back cover.

Step 2



- Remove the five 3.5mm T4 Torx Screws.
- Remove the two 4.5mm #00 Phillips screws.
- ⓘ Please be aware of the sticker below the battery. Following this guide past this point may void your device's warranty.

Step 3



- Place a plastic opening tool along the seam of the front plate and back plate. Run the opening tool along the seam while prying slightly in order to pop the plastic clips away from the front plate.
- Once one or two clips have popped away you may begin to use your free hand to apply additional pressure while continuing to apply prying pressure as well with the opening tool.
- ⓘ Apply constant but controlled pressure while separating the front from the back. Damage may occur if using excessive pressure while separating the plates along the seam.

Step 4



- Continue working your way around the seam between the two parts and eventually you will be able to separate the entirety of the backplate revealing the internals of the device.

Step 5 — Battery Removal



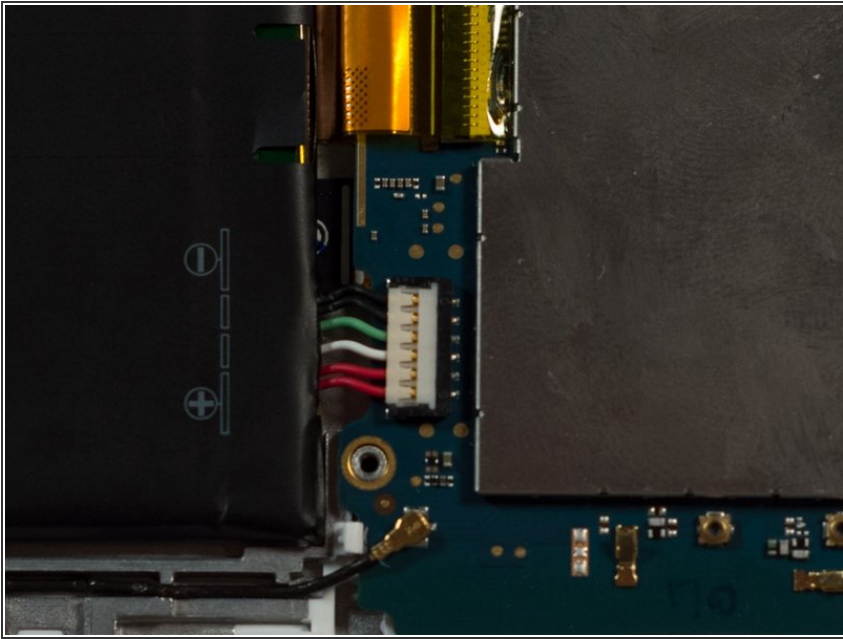
- Note the position of the battery connector.
- ⚠ We will be prying on the battery shortly which may cause accidental pressure to be place on this connector. Be careful not to damage this connector while removing the battery.

Step 6



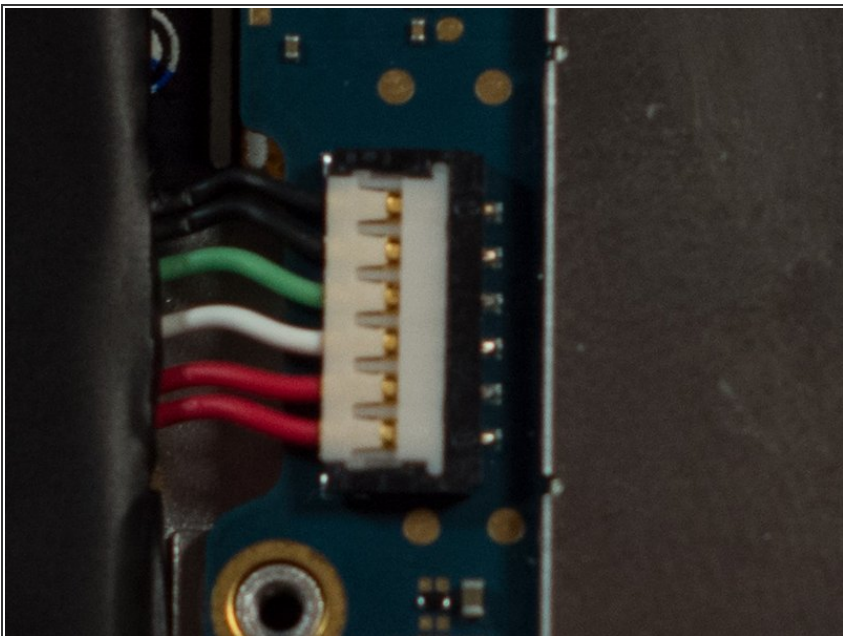
- Place the plastic opening tool to the side of the battery and work underneath the battery. Slowly and gently pry the battery away from the device removing the battery from the adhesive underneath.
- After breaking away one side of the battery from the adhesive strips you can take advantage of the additional leverage by using your hand to break free from the adhesive on the opposite side.
- ⓘ You will hear cracking and popping as the battery breaks loose from the adhesive strips underneath. This is normal and to be expected.

Step 7



- After prying the battery free from the device the connector can be removed by pulling directly up away from the device.

Step 8 — Battery



- ☑ Align the top of the connector, which is slightly larger than the rest of the connector, with the larger area in the

connector and push down securing
it in place.

To reassemble your device, follow these instructions in reverse order.