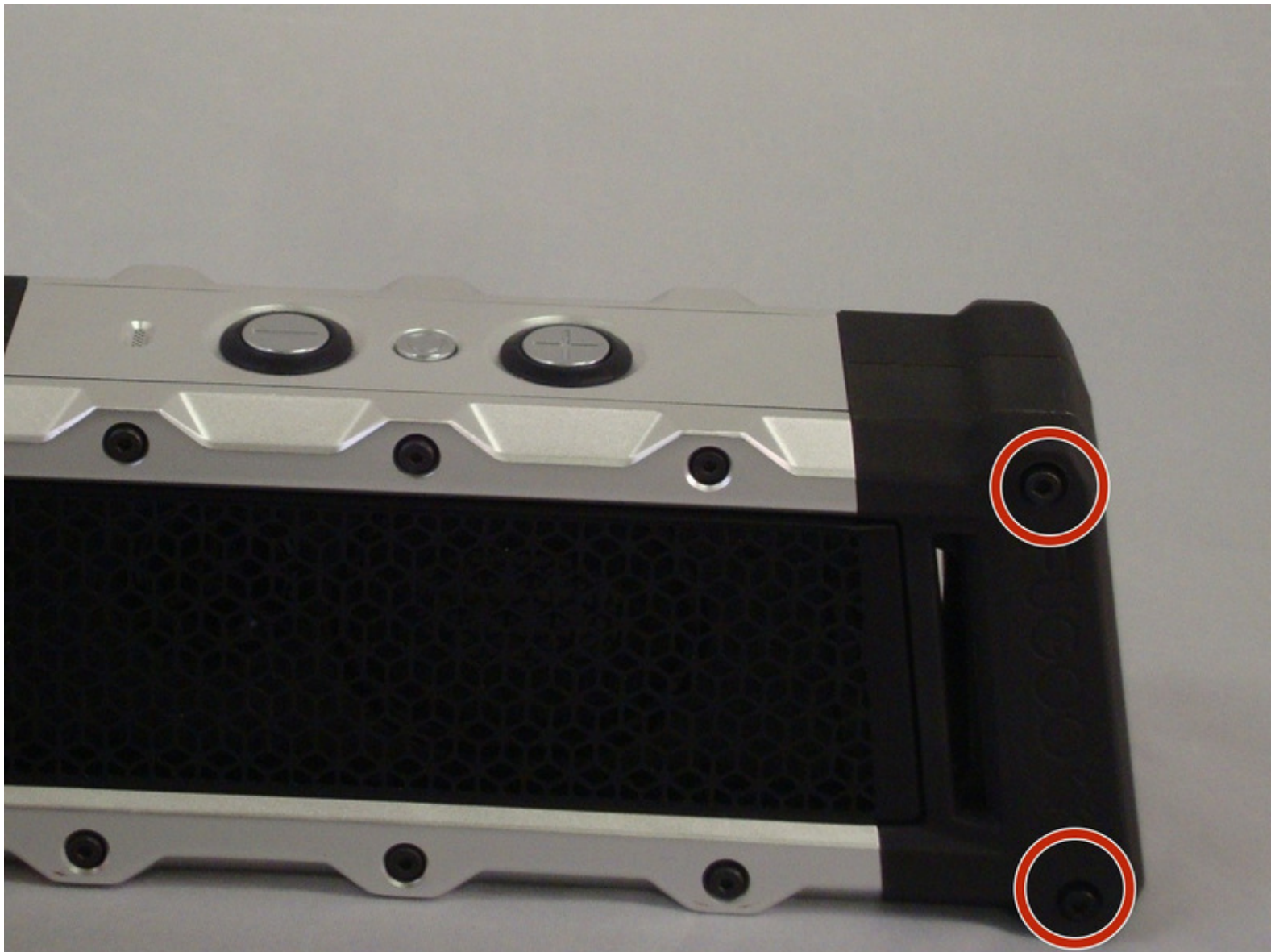




Fugoo Tough Device Speaker cover/Shell Replacement

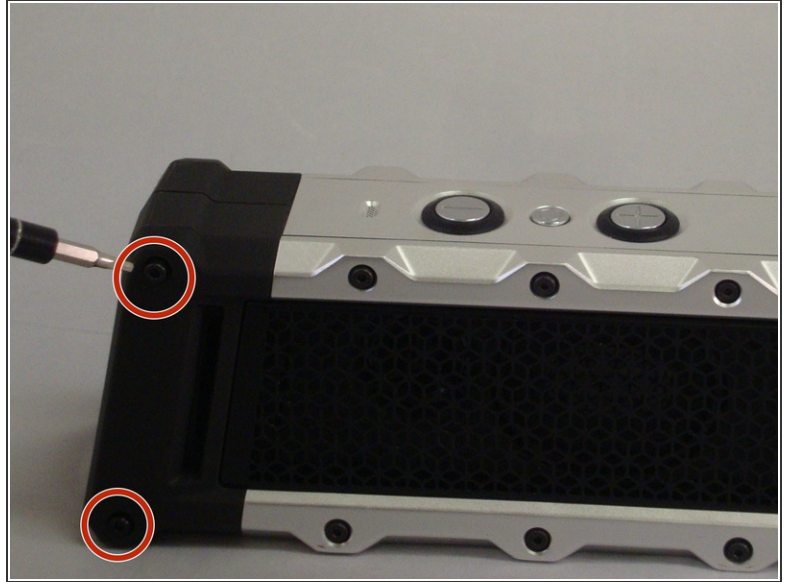
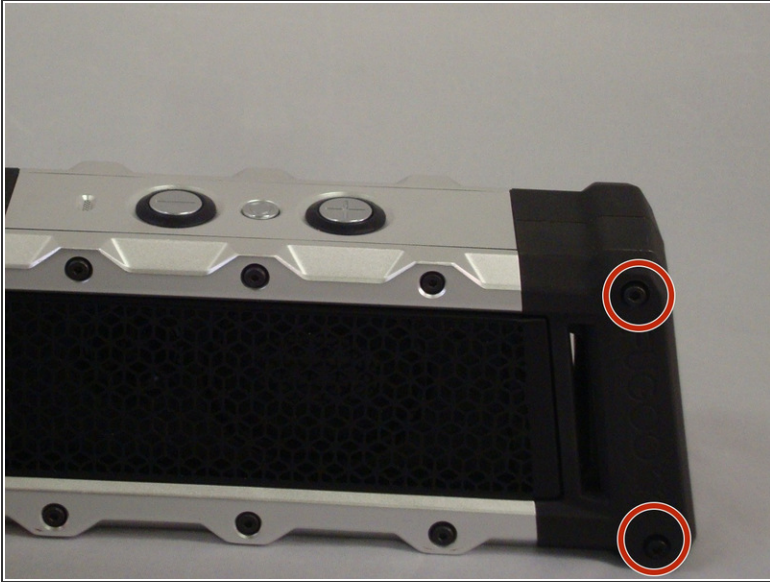
Written By: Daniel



INTRODUCTION

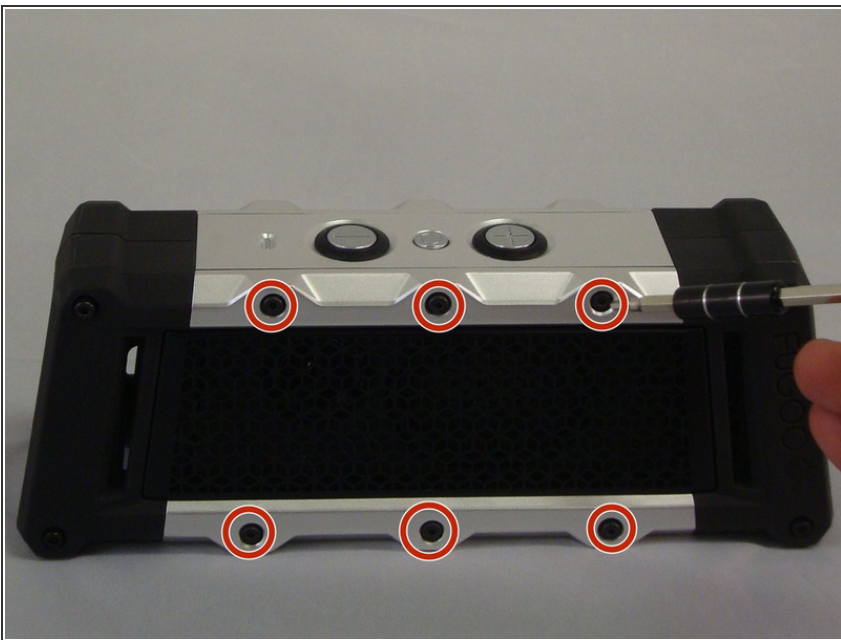
Outline what you are going to teach someone how to do.

Step 1 — Device Speaker/Shell



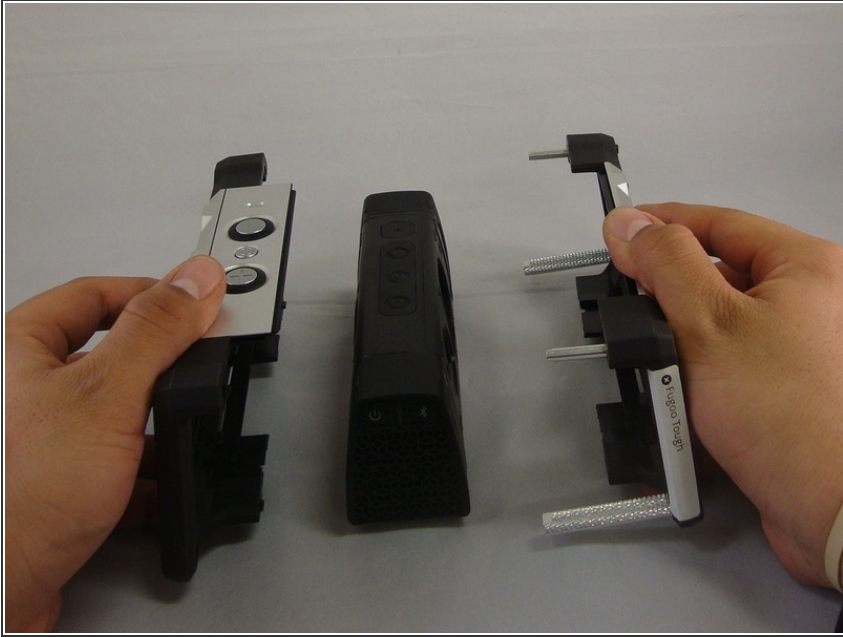
- Begin by unscrewing the four 10.72mm corner screws using the h2.0 screwdriver.

Step 2



- Using the h1.5 screwdriver remove remaining 6-5.79mm screws on the front of the speaker.

Step 3



- Pull front part of shell away from back part of shell.

To reassemble your device, follow these instructions in reverse order.

This document was last generated on 2017-07-08 04:26:11 PM.