



# Canon PowerShot G1 X Battery Replacement

This guide will show you where to find the battery casing on the Canon PowerShot G1 X and how to replace the battery correctly.

Written By: Cleston Sanders



## **INTRODUCTION**

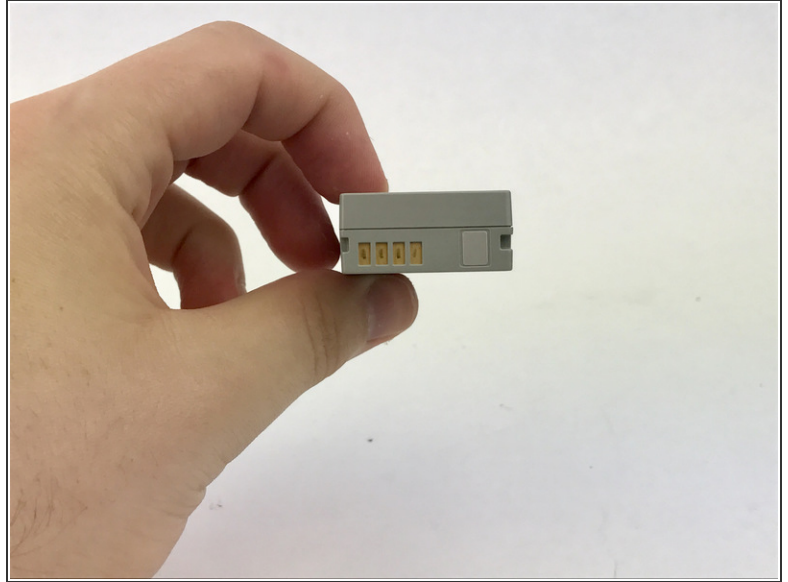
Does your camera not power on or hold a charge? You may have a faulty battery that needs replacing.

## Step 1 — Battery



- Pull the switch on the back of the battery case back towards the open arrow to release a latch.
- ⓘ The lid should pop open revealing the battery and a small red switch holding the battery in place.

## Step 2



- To release the battery, gently push the switch off the top of the battery and pull the battery out of the casing.
- ☒ Place the new battery in the casing with the four metal connections (small squares on the bottom of the battery) in the bottom right hand corner of the bottom of the camera. If you look inside the casing you will see where the connections will meet. This will give you more of an idea on the orientation of the battery.

To reassemble your device, follow these instructions in reverse order.

This document was last generated on 2017-06-20 02:07:42 AM.