



Luxury Fashion Quality Military Quartz Watch Link Replacement

Add or remove links in order to replace broken links or resize the watch band.

Written By: Jacob Posey



INTRODUCTION

Add or remove links in order to replace broken links or resize the watch band.

TOOLS:

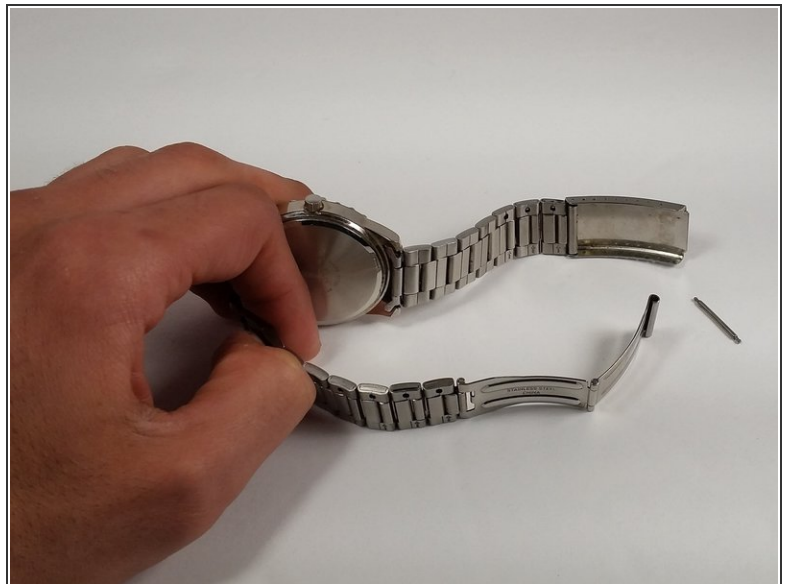
- [Tweezers](#) (1)
 - [Pin Punch](#) (1)
-

Step 1 — Watch Link



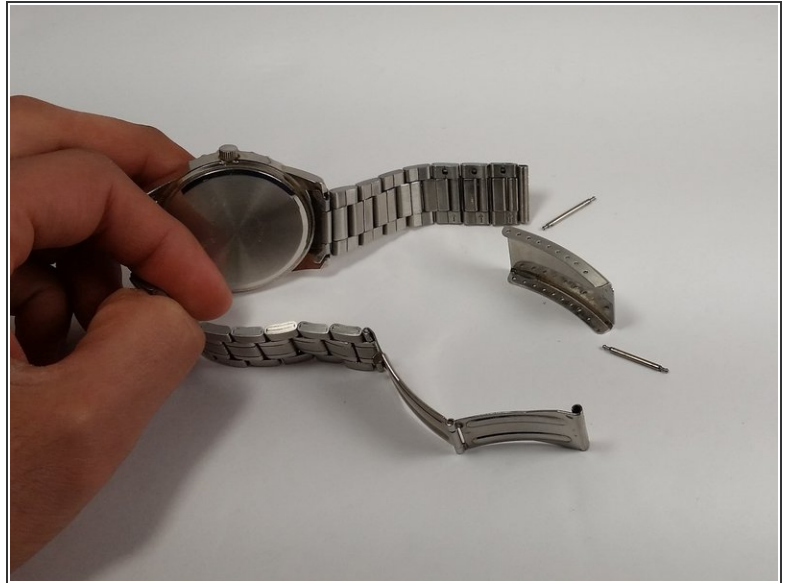
- Measure the watch band to decide how many links to remove.
- ⓘ It is better to remove an even number of links to keep the clasp centered and symmetrical.

Step 2



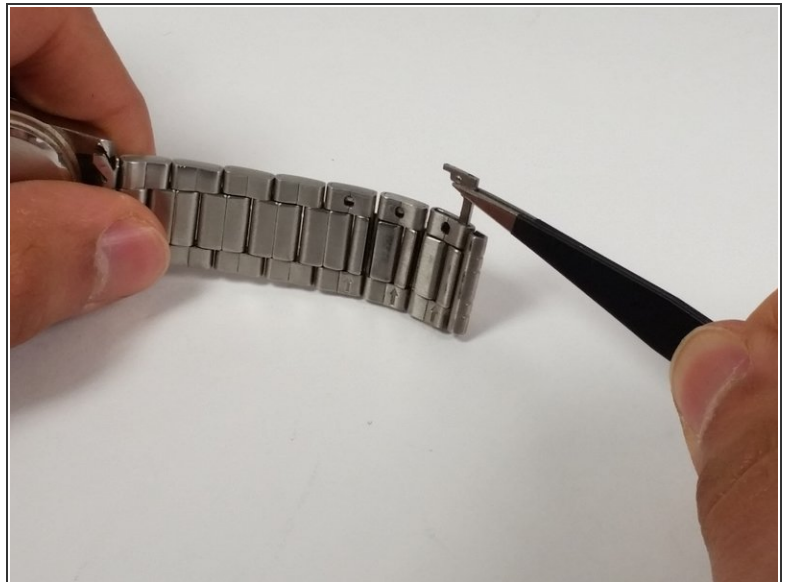
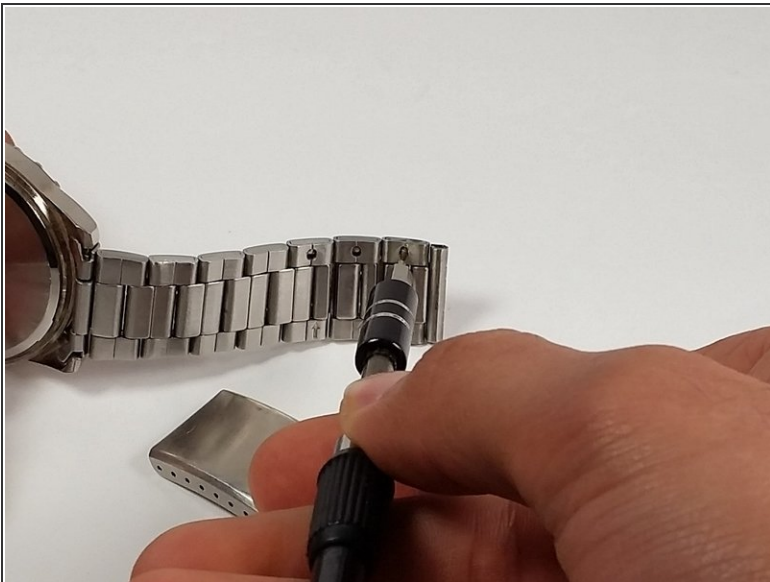
- Separate the clasp by pushing in the spring pin.

Step 3



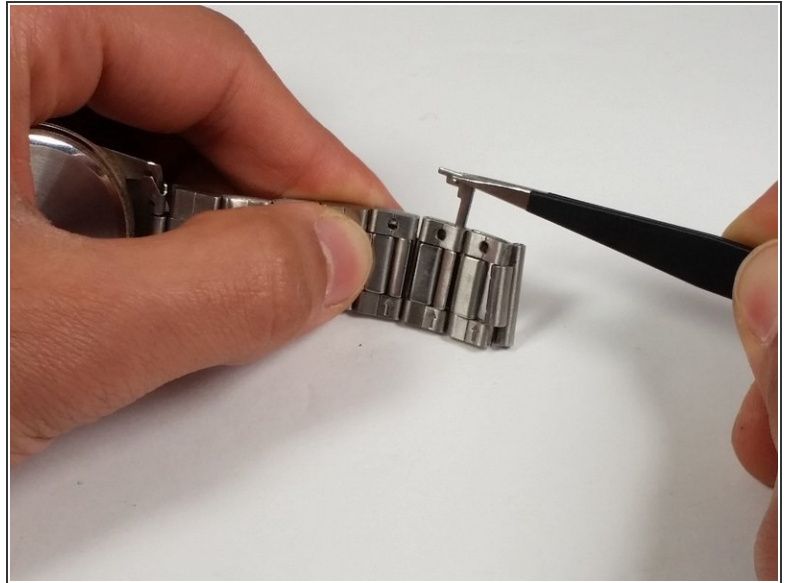
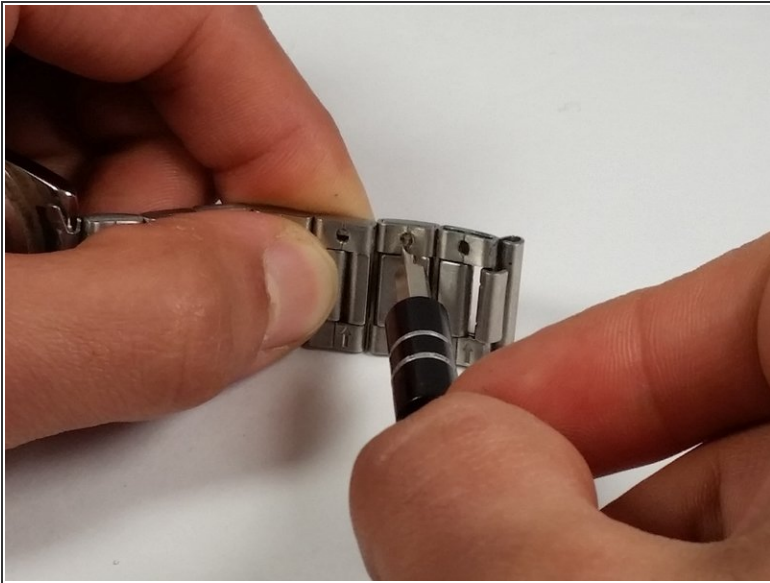
- Remove the clasp from the lug by pushing in on the spring pin.

Step 4



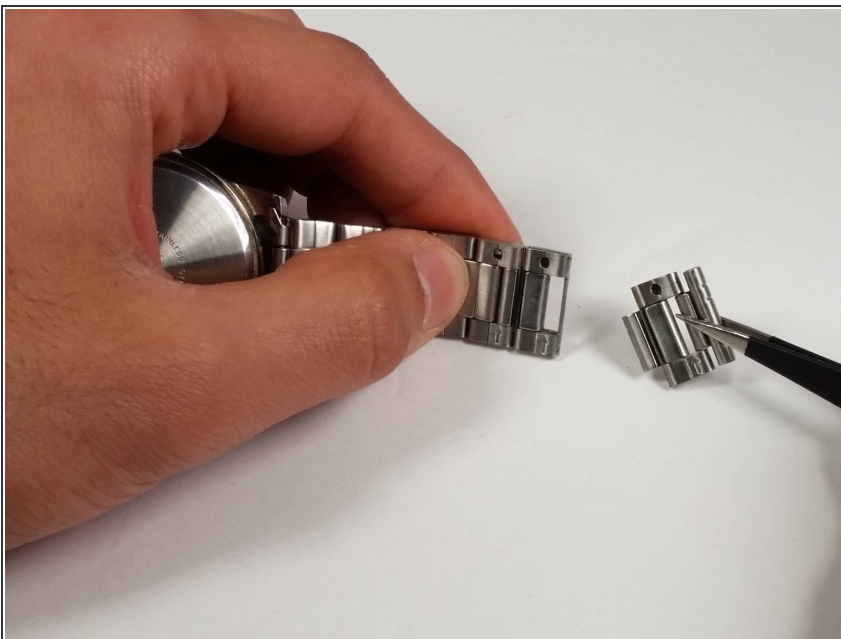
- To remove the first link and lug, push in on the link pin to raise it up.
- Grasp the link pin and pull it out from the link.

Step 5



- Push in on the second link pin.
- Grasp the link pin and pull it up and out.

Step 6



- Pull the link apart to remove it from the band.

To reassemble your device, follow these instructions in reverse order.