



# Fujifilm FinePix Z5 LCD Screen Replacement

This guide provides clear images and step-by-step instructions to disassemble the camera in order to replace the LCD screen.

Written By: Kyle Kaczmar



---

## INTRODUCTION

The LCD screen will often go black and remain non-responsive. This guide will take you through the steps of replacing the broken screen and installing a new one.

---

### TOOLS:

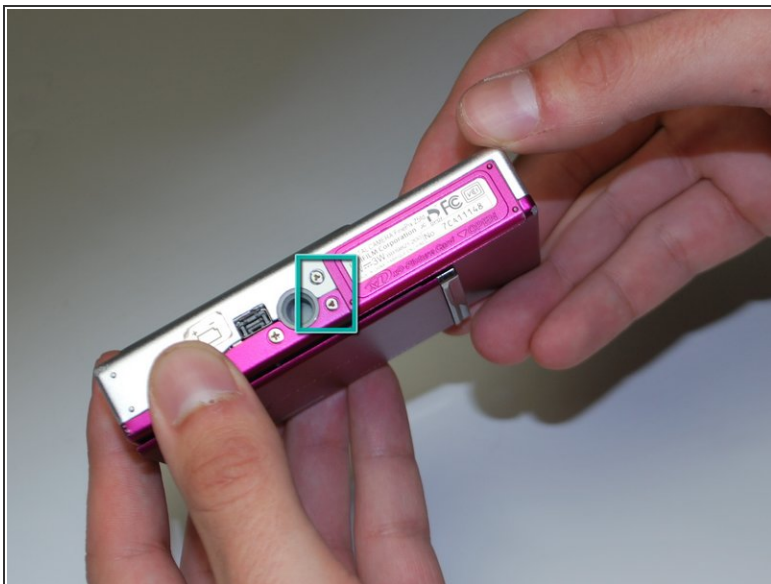
- [Phillips #00 Screwdriver](#) (1)
  - [iFixit Opening Tools](#) (1)
  - [Tri-wing Screwdriver](#) (1)
-

## Step 1 — LCD Screen



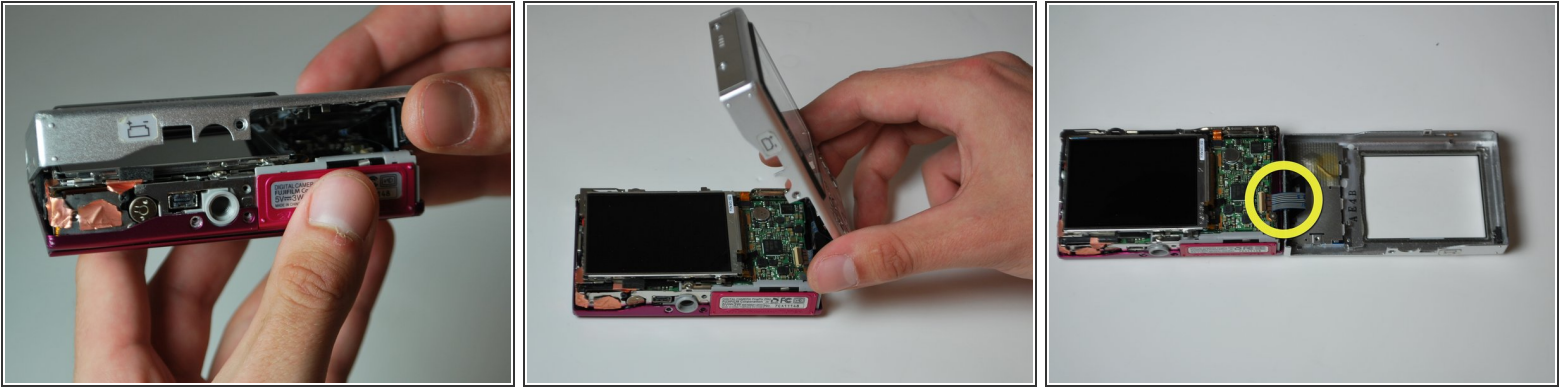
- Remove the two screws on the right side of the camera and the two screws on the left side.
- Use a small #00 Phillips flat head screwdriver.
- ☑ Keep all the screws in a container and the two different types separate.

## Step 2



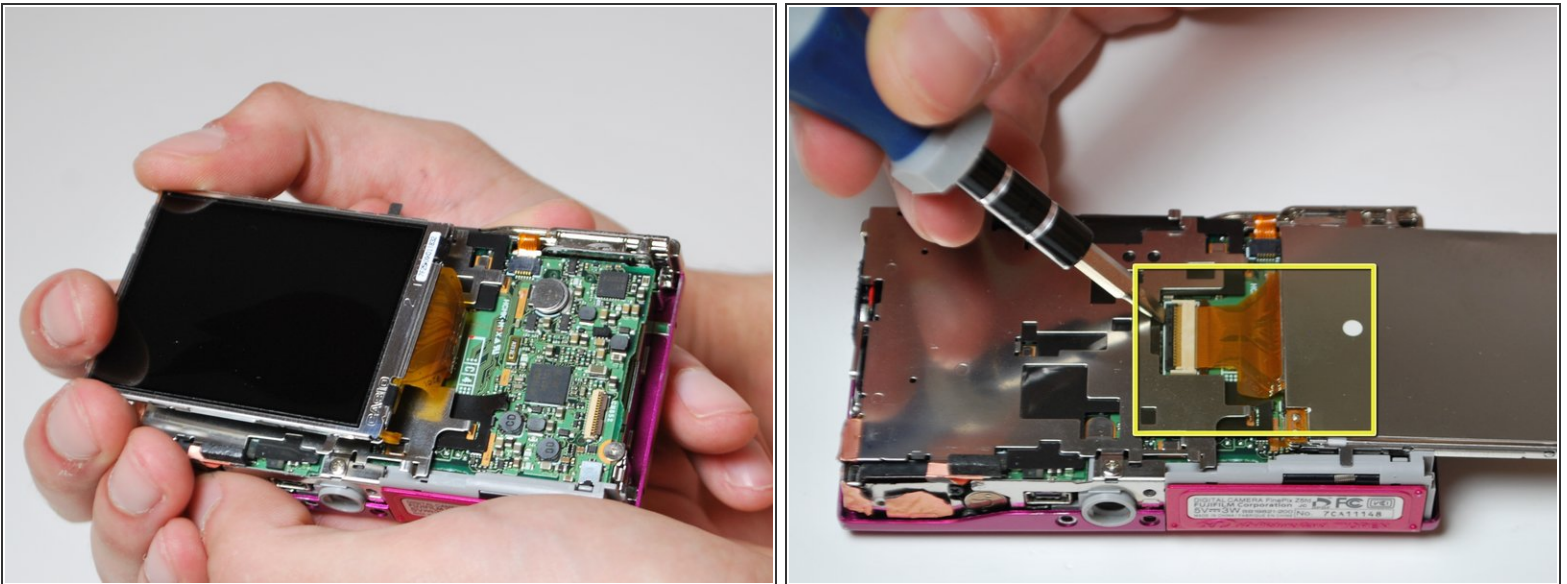
- Remove the three screws from the bottom of the camera.
- You need a three-prong screw driver for two of the three screws; keep these screws separate.

### Step 3



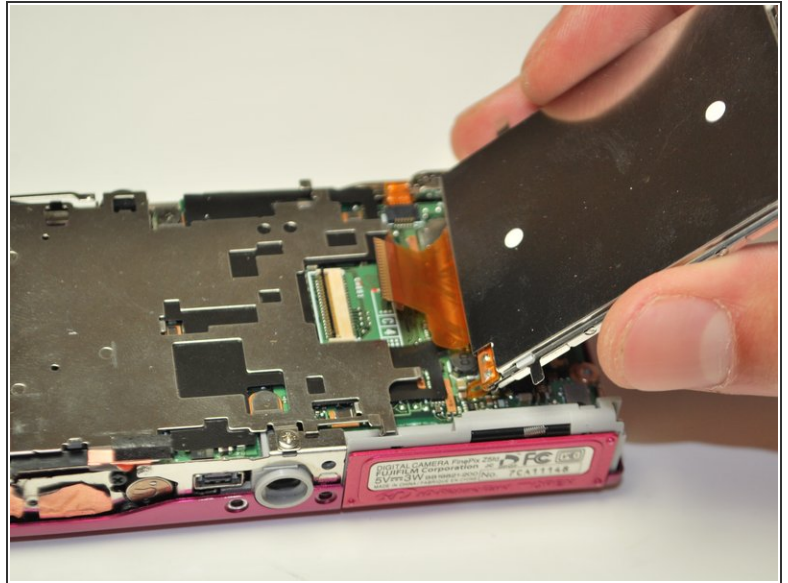
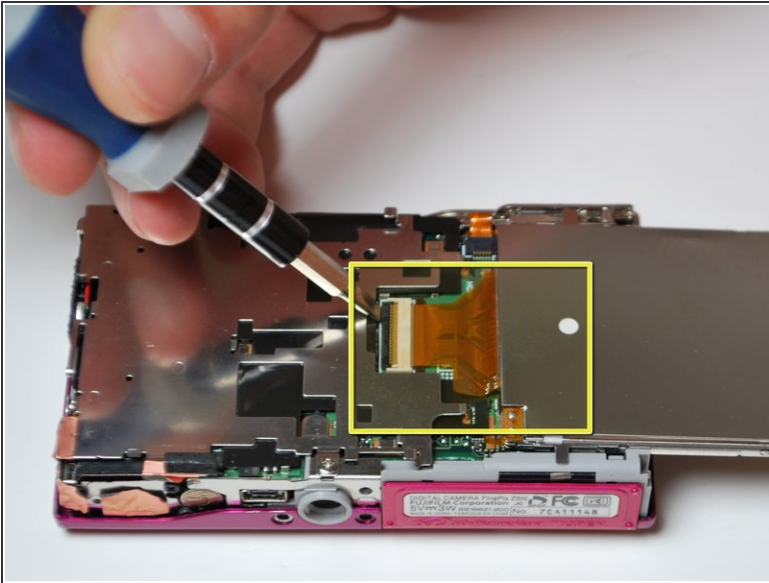
- Remove the back by carefully flipping it open to the right side.
- There will be a ribbon cable attaching the front panel to the motherboard, be sure not to tear this.

### Step 4



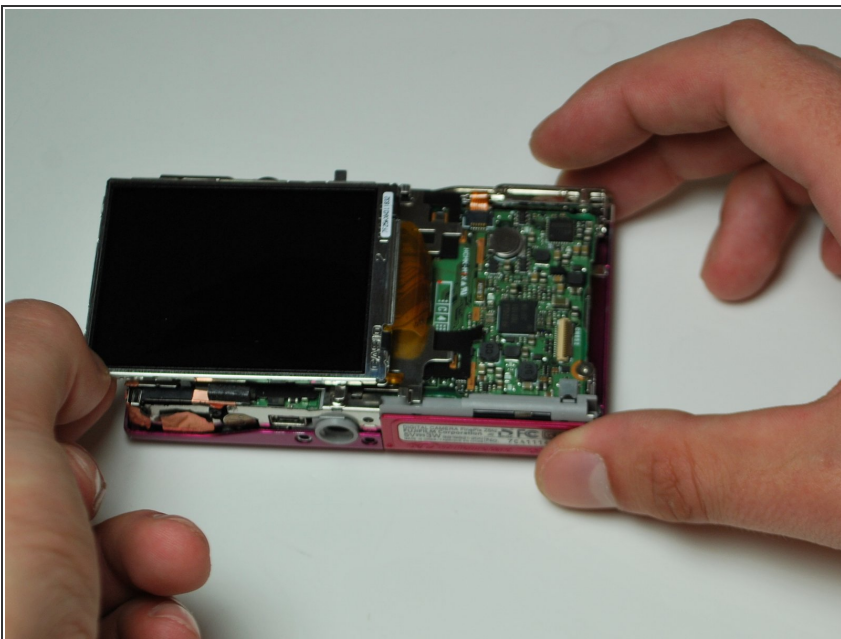
- Pull the LCD screen to the left slightly, lift it and flip it open to the right.
- ⚠ There is also a ribbon cable attaching the LCD screen to the motherboard, be careful not to tear it.

## Step 5



- Using a small flat head screw driver, flip open the black lever to release the ribbon cable.
- Gently slide the cable out of the lock; the LCD screen is now free to be removed.

## Step 6



- Using your index finger, guide the cable of the new screen into place. Lock it in by pushing the black lever back down.

To reassemble your device, follow these instructions in reverse order.