



Sky TV Remote Teardown

Written By: QEIIRepair



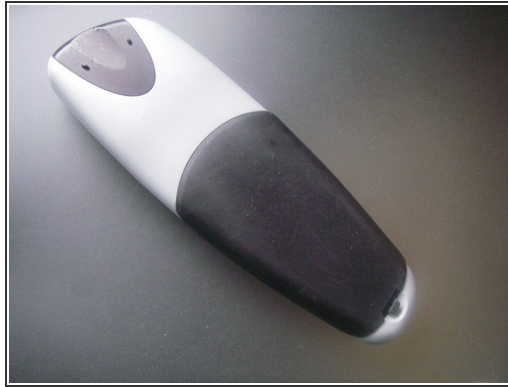
INTRODUCTION

Teardown of the Sky TV Remote, note: not Sky+ or Sky HD.

TOOLS:

- [Phillips #1 Screwdriver](#) (1)
 - [Spudger](#) (1)
-

Step 1 — Sky TV Remote Teardown




- This is it. Well, this is it in a functional state.

 Remove the batteries before starting!

Step 2



- Use a Philips head screwdriver to remove this screw
 - Use a spudger to unlock all the tabs around the sides, start at the bottom
 - Work your way all the way around the remote, this is flippin' tricky.
-  Brute force is compulsory.

Step 3



- After all the tabs are off, the body should just fall away leaving the buttons, the circuit board, the case and the black infra-red bit at the end.
- Ta-daa!