



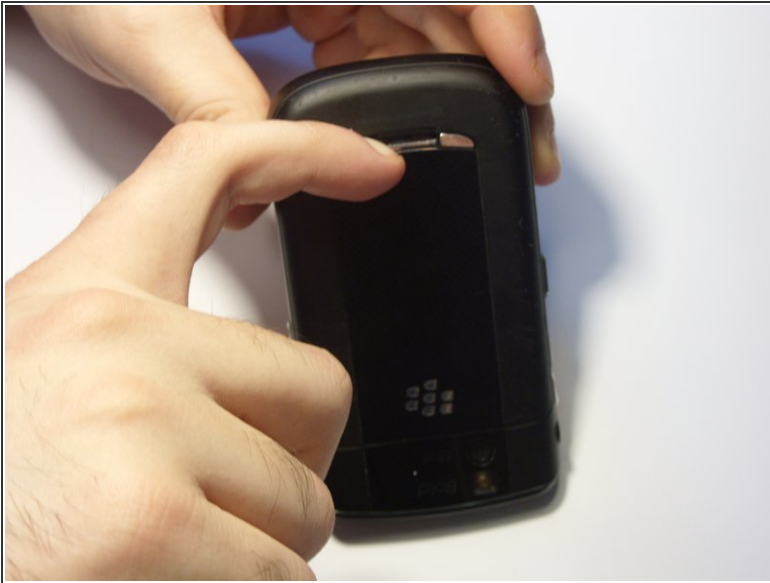
Blackberry Bold 9650 SIM Card Replacement

Step-by-step instruction on how to replace your Blackberry SIM card

Written By: Ryan



Step 1 — Battery



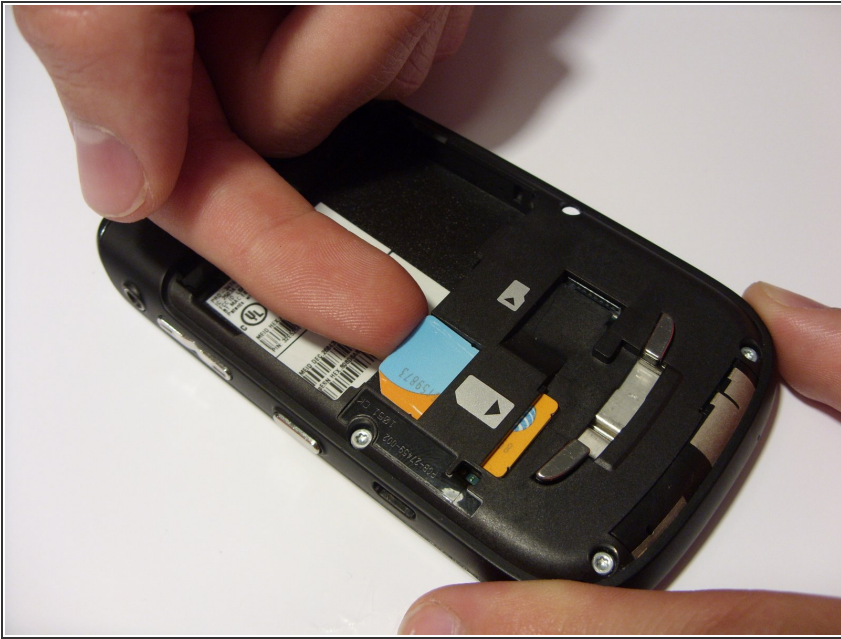
- Turn the device upside down.
- Using your finger, slide the silver cover release button towards the top of the device.
- Lift and remove the back cover.

Step 2



- Using your fingernails, lift the sides of the battery.
- Remove the battery.

Step 3 — SIM Card



- Orient the device so the screen is facing the ground.
- Using your finger, gently lift the top of the SIM card.

Step 4



- Gently pull out the SIM card.
- ⚠ The card will break in half if you apply too much force when pulling out the card.

To reassemble your device, follow these instructions in reverse order.