



# BLU Studio 5.0 S II Power Button Replacement

This guide details the steps required to replace the power button in BLU Studio 5.0 S II.

Written By: Curt Collingwood



## INTRODUCTION

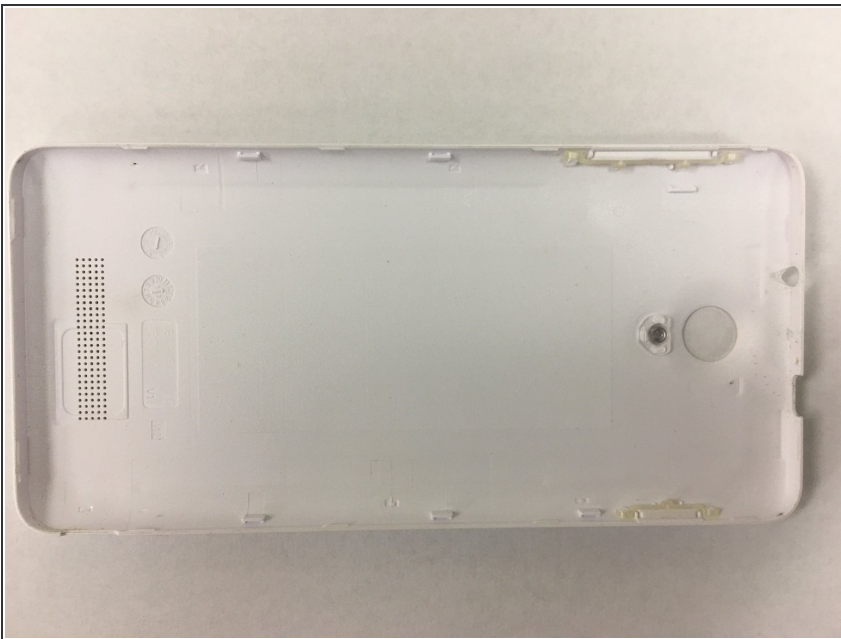
These steps will describe in detail how to replace the power button for the BLU Studio 5.0 S II cell phone.

## Step 1 — Power Button



- Remove the backplate. It's possible to use your fingernail, but the edge of your finger should work as well.

## Step 2



- Replace the back cover of the BLU Studio 5.0 S II.

To reassemble your device, follow these instructions in reverse order with a replacement of the backplate. If this does not succeed refer to motherboard replacement.

