



Samsung Galaxy Tab A 7.0 Battery Replacement

Replace faulty battery to your Samsung Galaxy Tab A 7.0"

Written By: Bradley Watson



INTRODUCTION

During all steps, handle every component with care as they are very delicate electronic parts.



TOOLS:

- [iFixit Opening Tools](#) (1)
- [Tweezers](#) (1)



PARTS:

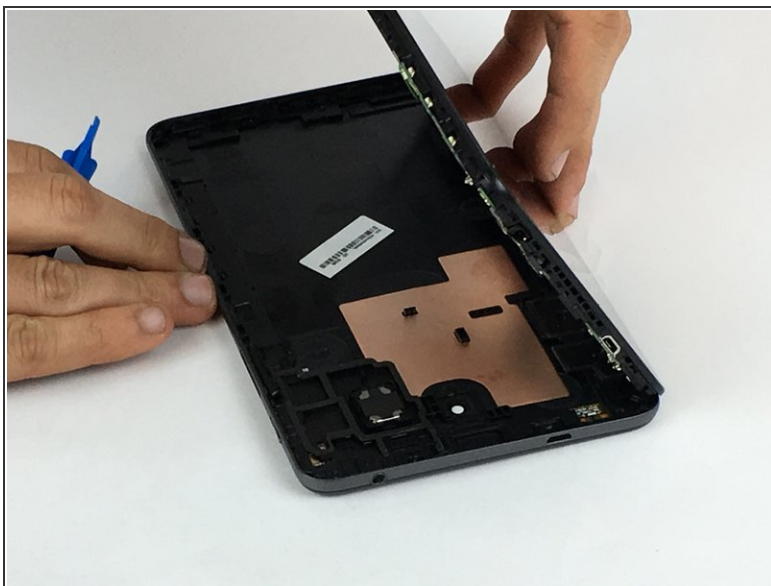
- [Galaxy Tab A 7.0 Battery](#) (1)

Step 1 — Battery



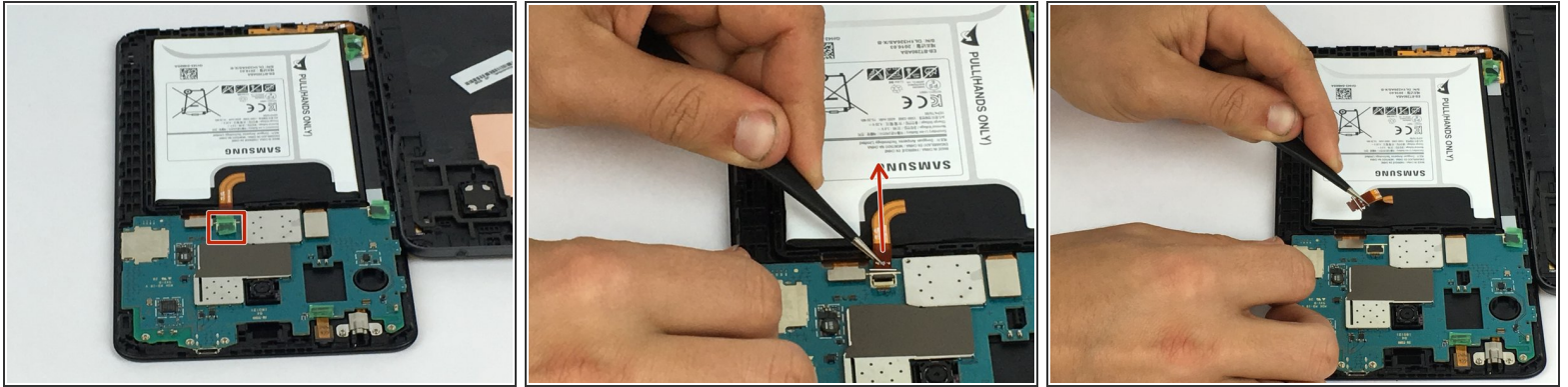
- Using the plastic opening tool, starting at any corner on the tablet, insert the tool between the back panel and the front panel.
- Slide tool around the tablet to unlock the panels from one another.

Step 2



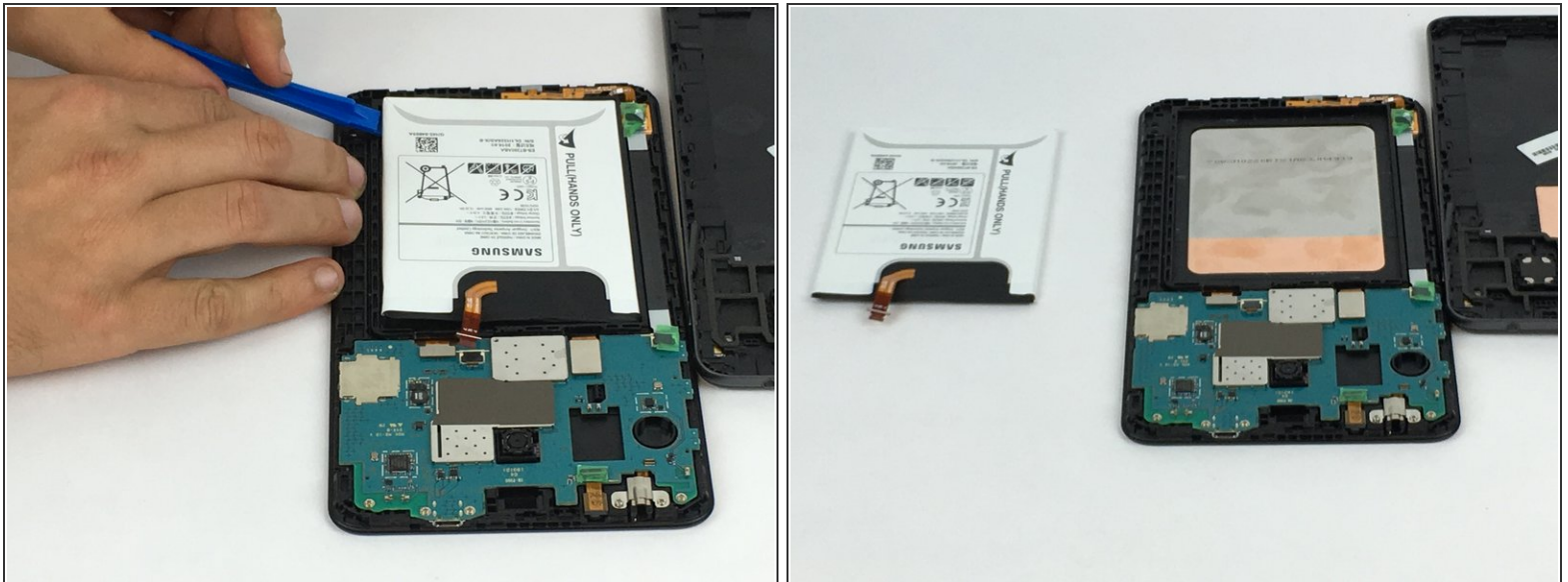
- Carefully remove the back panel from the front panel.
- The inner components of the tablet will now be exposed.

Step 3



- Using tweezers, gently lift the black tab locking the wire connecting the battery to the motherboard.
 - Pull wire from connector.
- i** This is the only connection for the battery to the motherboard.

Step 4



- Remove the battery from the device.
- i** Separating tool may be needed in order to lift battery from device.

To reassemble your device, follow these instructions in reverse order.

This document was generated on 2019-09-28 12:21:25 PM (MST).

