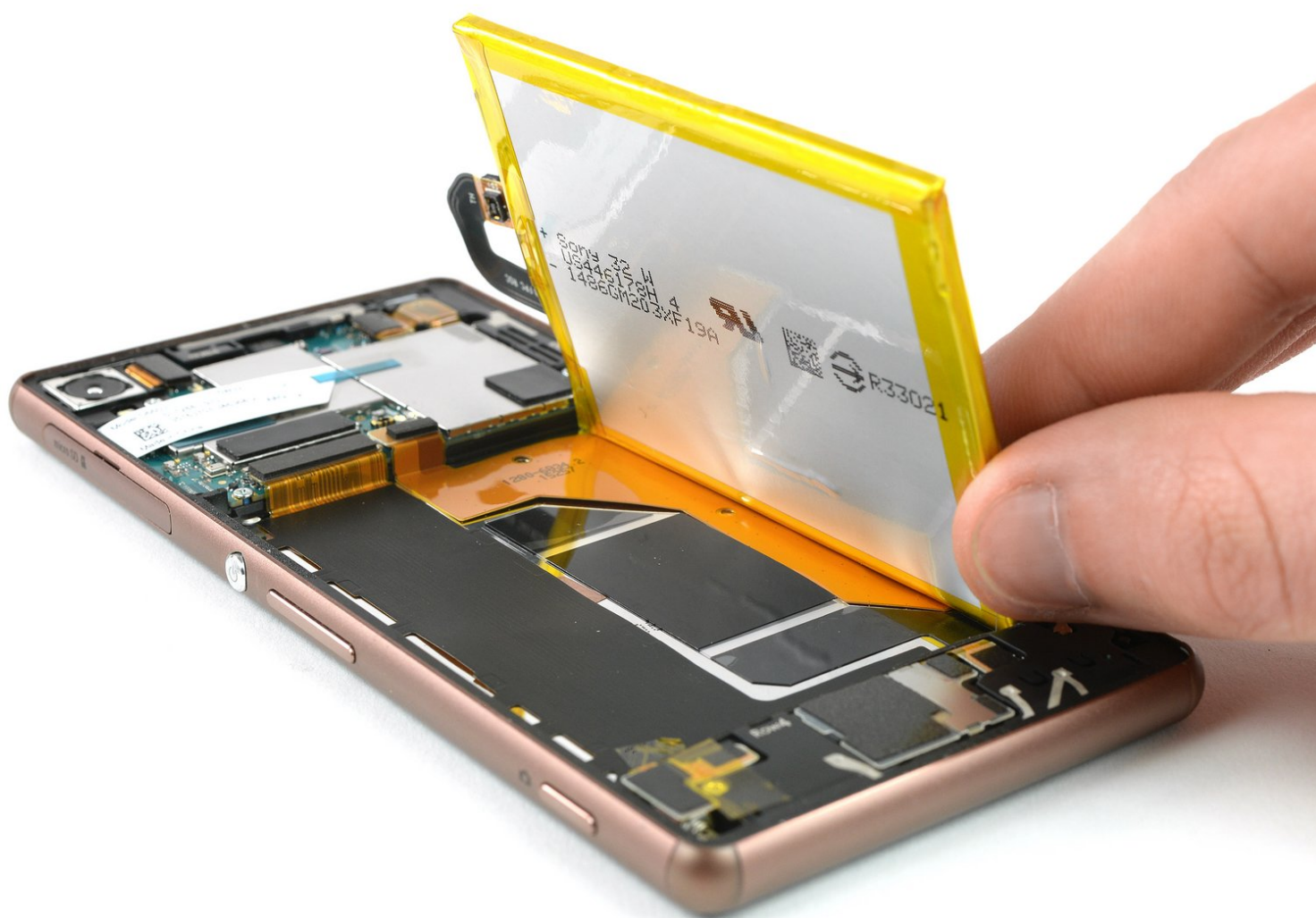




Sony Xperia Z3 Battery Replacement

Replace the battery in your Sony Xperia Z3.

Written By: Dominik Schnabelrauch



INTRODUCTION

Use this guide to replace the old battery in your Sony Xperia Z3.

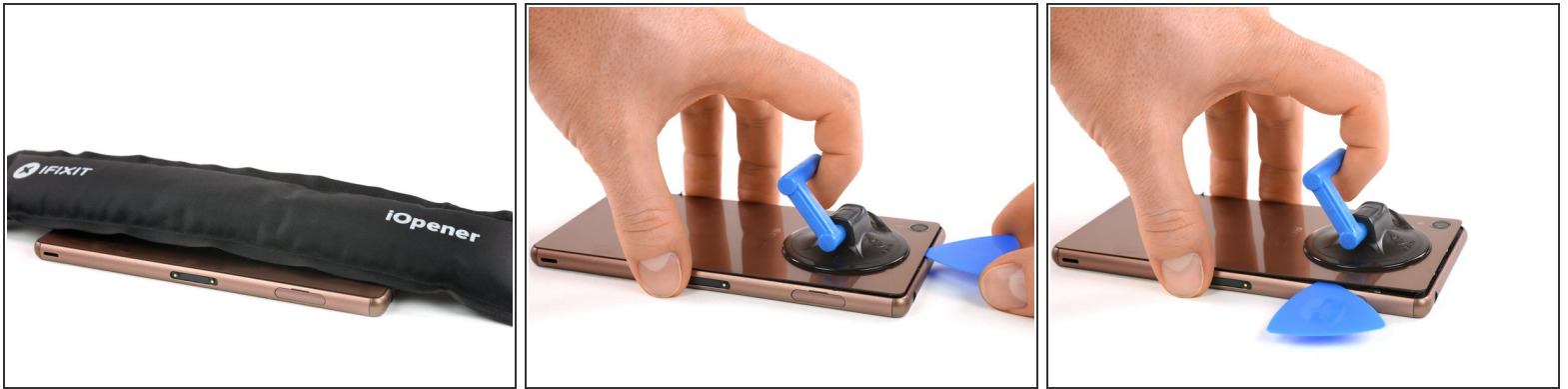
TOOLS:


- [iOpener](#) (1)
- [Suction Handle](#) (1)
- [iFixit Opening Picks set of 6](#) (1)
- [Tweezers](#) (1)
- [Spudger](#) (1)

PARTS:

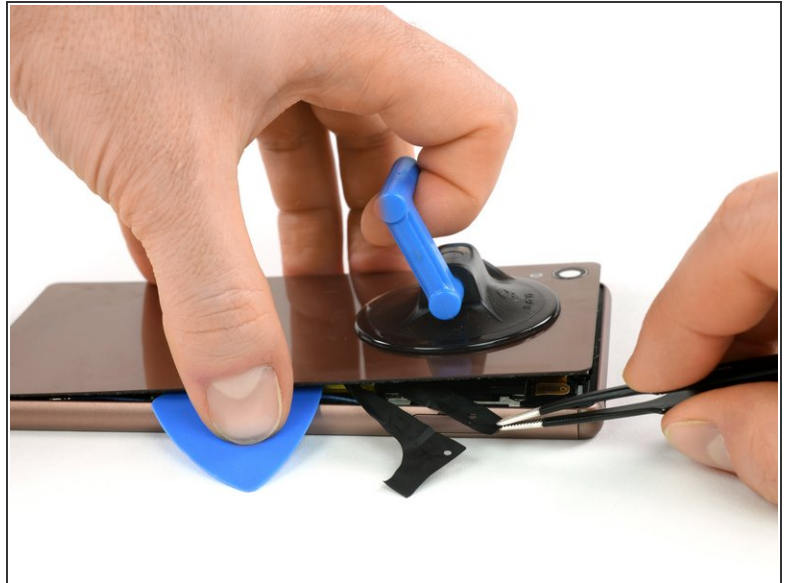
- [Sony Xperia Z3 Replacement Battery](#) (1)
- [Sony Xperia Z3 and Z3 Dual Back Cover Adhesive](#) (1)
- [Sony Xperia Z3 NFC Antenna](#) (1)

Step 1 — Back Cover



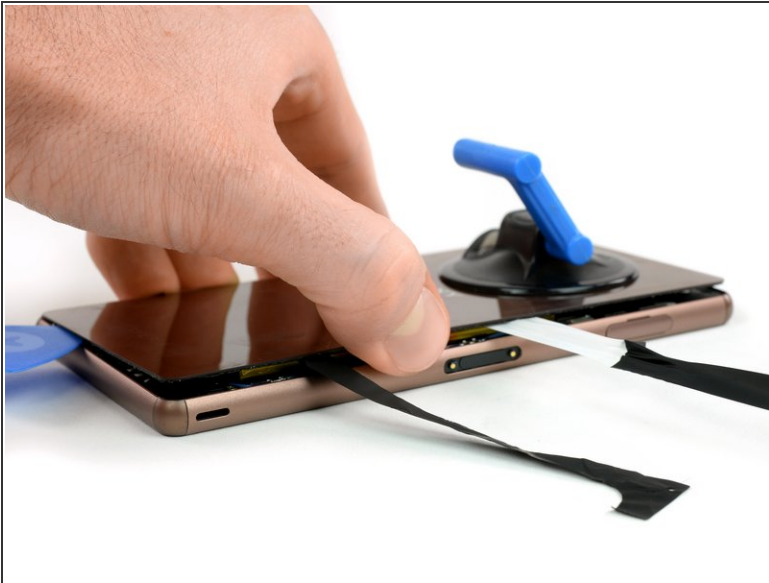
- Heat the back cover of your Xperia Z3 to loosen the adhesive underneath.
 - Lift up the back cover with a suction handle and put an opening pick in the gap.
 - Move the pick carefully around the edges to loosen the adhesive on every side of the phone.
-  Don't put the pick in too deep under the back cover to not damage any parts inside the phone.

Step 2



- i** There are two adhesive strips in the center of the phone connecting the rear case to the battery, you'll need to remove them to open the phone.
- When the edges of the cover are free from adhesive, tilt it to allow access to the battery tabs.
 - Use tweezers to pull the two black adhesive strips out of the phone but don't pull just yet.

Step 3



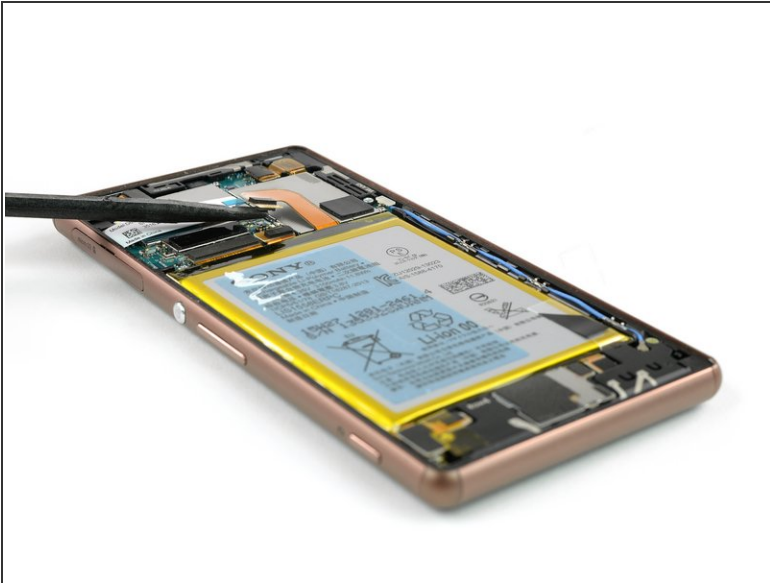
- Gently pull out both of the adhesive tabs out of the phone, parallel to the rear cover.
- ⓘ If the adhesive tabs break, try to use a thin flat plastic tool such as a plastic card to remove the last of the adhesive. If the adhesive is stubborn, heat it with an iOpener or hair dryer and pry again.

Step 4



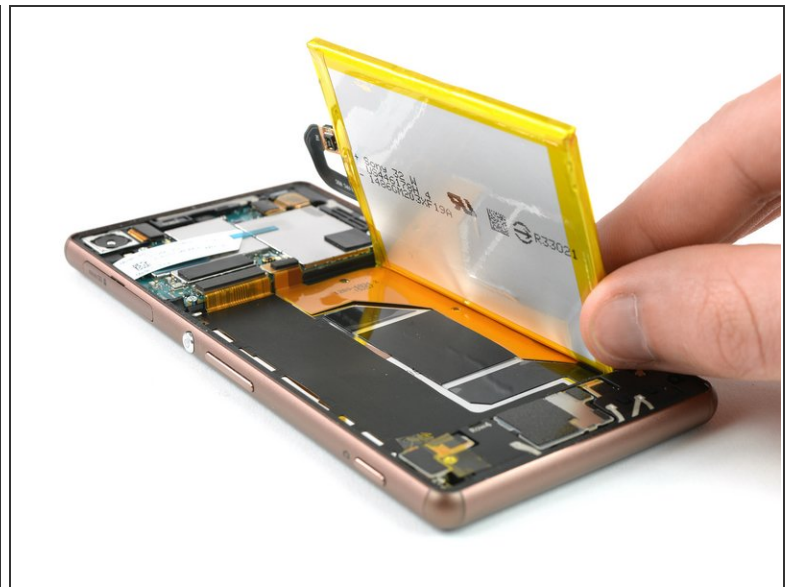
- After pulling out the adhesive tabs, you can lift the back cover and remove it.

Step 5 — Battery



- Unplug the battery flex connector.
- Use a tweezer to gently pull off the adhesive strip on the bottom part of the battery.

Step 6



- Use a spudger on the left side of the frame to lever out the battery.
⚠ Be careful with the spudger - there are cables beneath the battery!
- Remove the battery.

To reassemble your device, follow these instructions in reverse order.

This document was last generated on 2019-08-17 07:53:35 AM.