



# Griffin iFM 4027 Rear Clip Replacement

Replace the rear clip of your Griffin iFM 4027.

Written By: Alexander



## INTRODUCTION

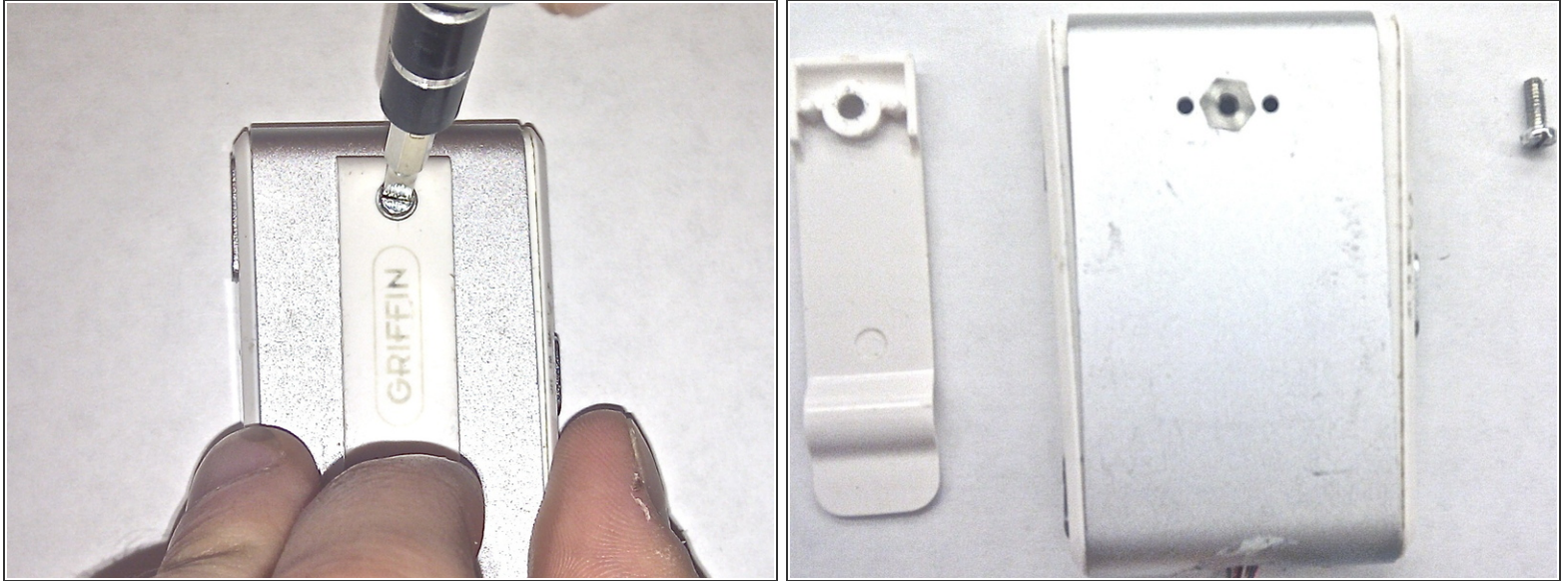
The rear clip is located on the side of the Griffin iFM opposite to the screen and is useful for attaching the device to various locations. If your clip has broken, use this guide to replace it.

---

### TOOLS:

- [Flathead 3/32" or 2.5 mm Screwdriver](#) (1)
-

## Step 1 — Rear Clip



- Use a 3/32" flat head screwdriver and insert the head into the screw.
- Turn the screwdriver counter-clockwise to loosen the screw until it is completely detached.

After disassembly, the device components should look similar to that which is depicted in the cover image (top right of page).

This document was last generated on 2017-06-18 12:36:39 PM.