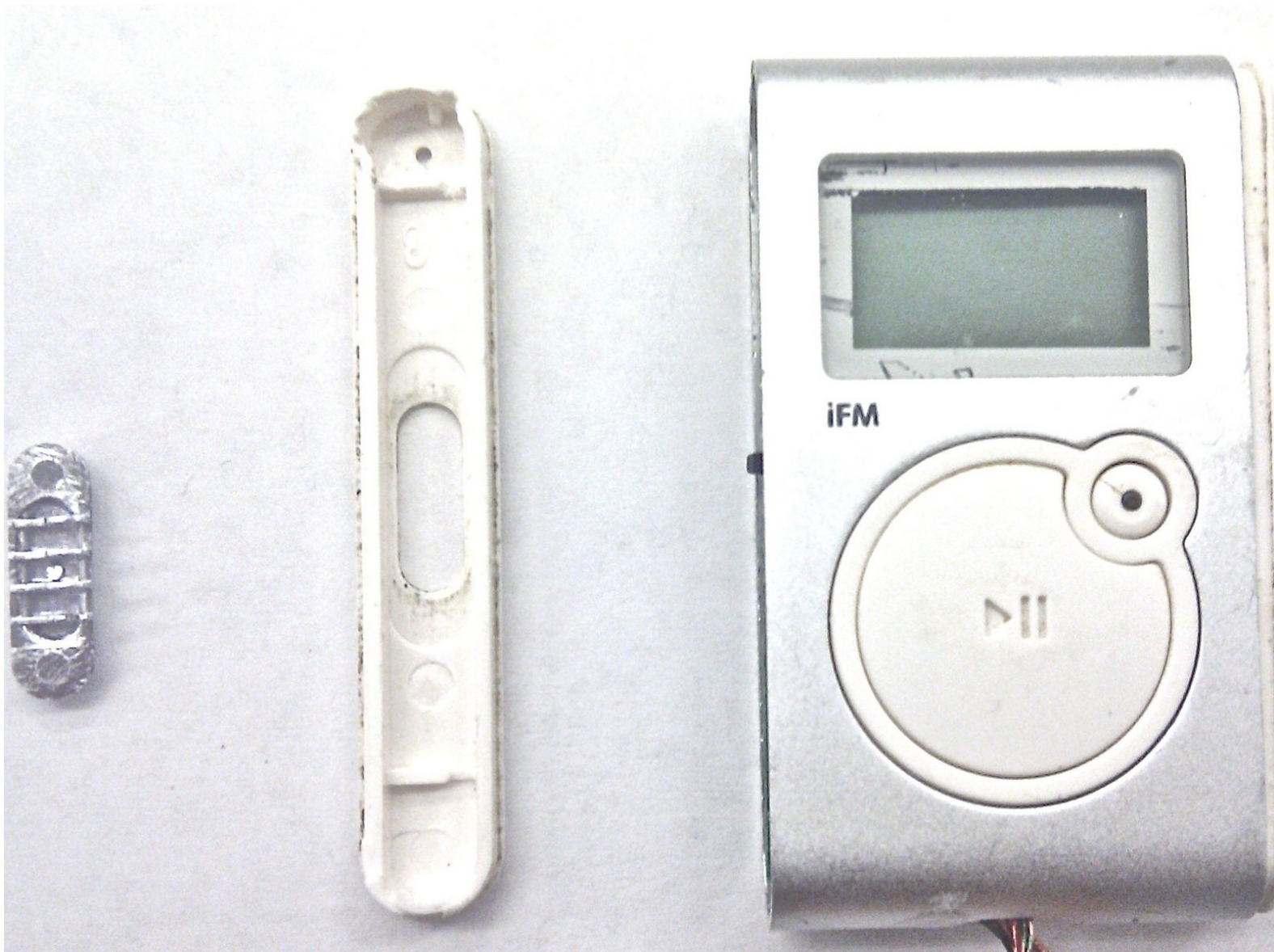




Disassembling Griffin iFM 4027 Left Side Panel (Screen Side Up)

This guide will teach the user how to detach the left side panel and the button.

Written By: Alexander



INTRODUCTION

There are no prerequisites required for this disassembly, but a spudger or similar opening tool is required to remove the panel.

TOOLS:

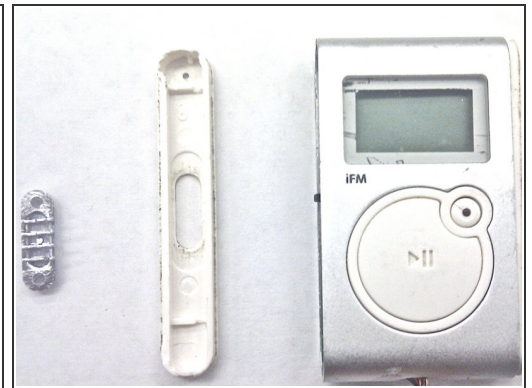
- [iFixit Opening Tools](#) (1)
-

Step 1 — Left Side Panel (Screen Side Up)



- Lodge the tip of the plastic opening tool into the top arc of the front panel. Apply a little force to cause the panel to detach.

Step 2



- Slide the blue opening tool along the seam applying force to continue detaching the side panel.
- Remove the button from the side panel.

After disassembly, the device components should look similar to that which is depicted in the cover image (top right of page).