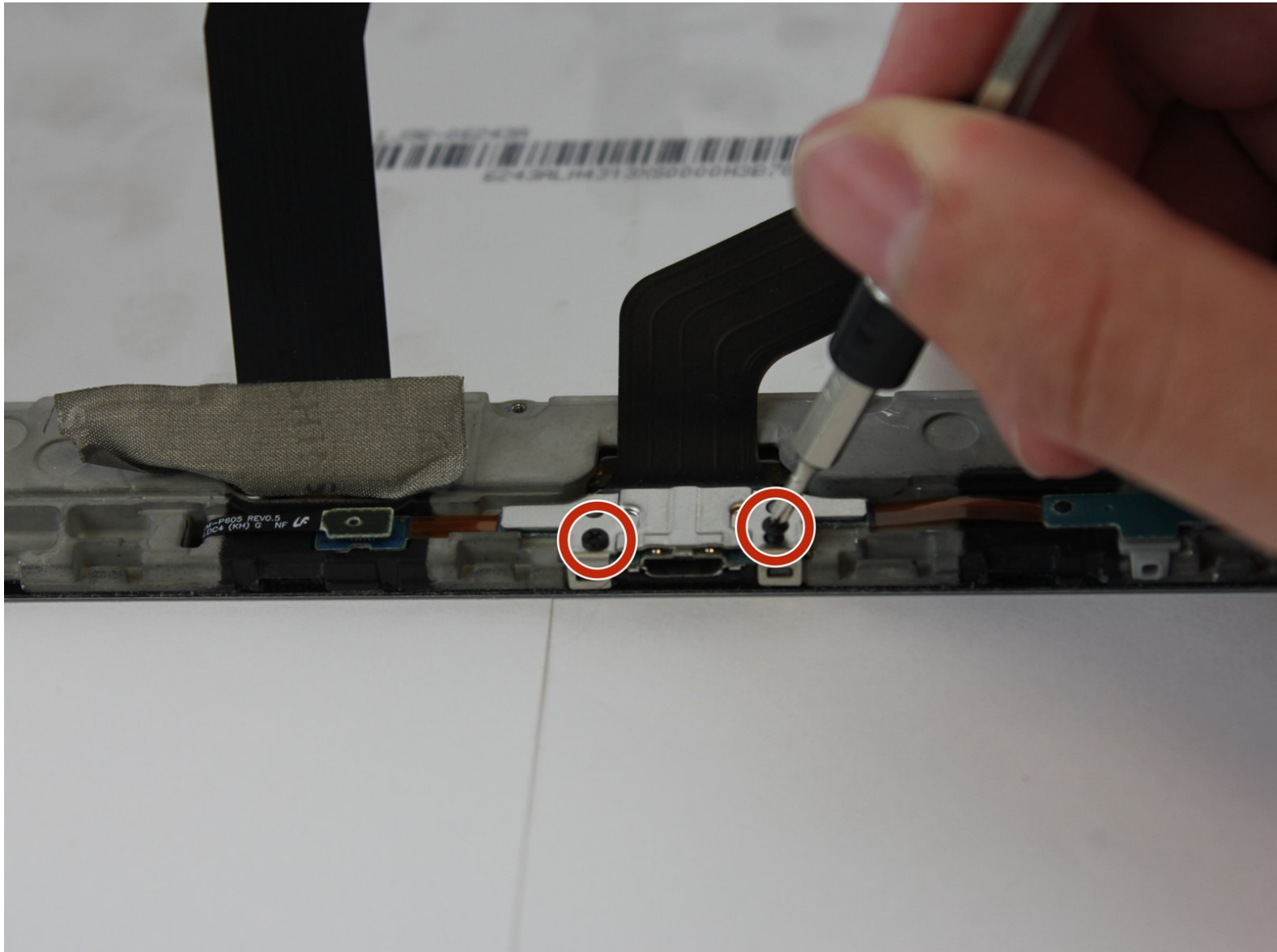




Samsung Galaxy Note 10.1 2014 Charging Port Replacement

Use this guide to replace the charging port in your Samsung Galaxy Note 10.1 2014 edition.

Written By: Joseph Rasico



INTRODUCTION

This guide will teach you how to replace the charging port in your Samsung Galaxy 10.1 2014 edition.

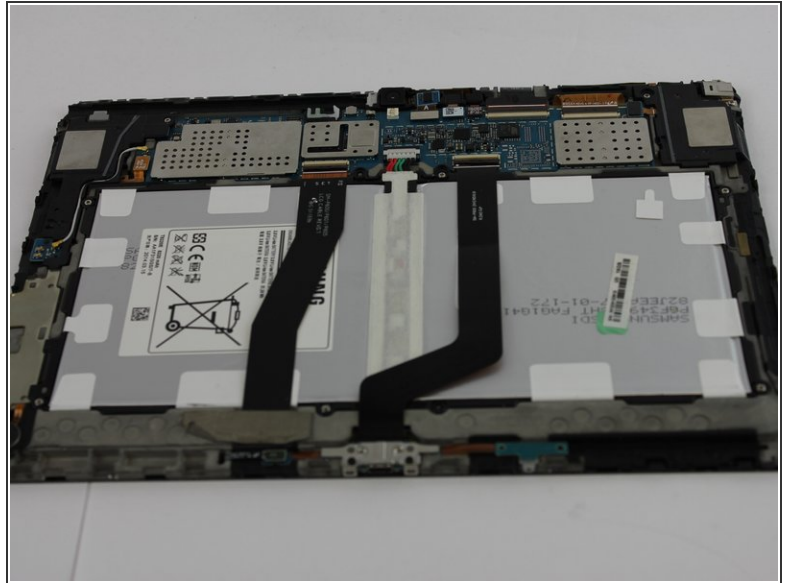
TOOLS:

- [Black Nylon Spudger](#) (1)
- [Metal Spudger](#) (1)
- [Phillips #000 Screwdriver](#) (1)

PARTS:

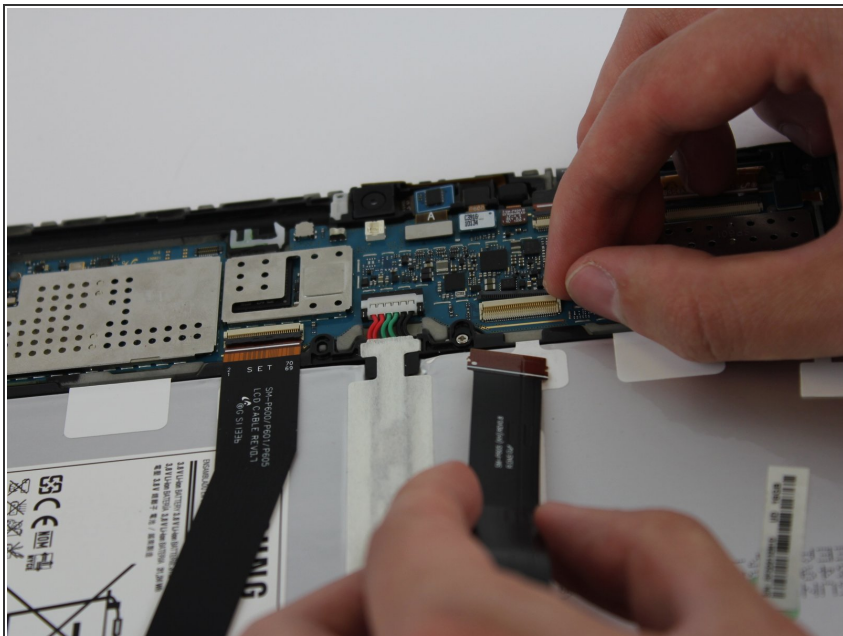
- [Galaxy Note 10.1 \(2014, Wi-Fi\) Charging Assembly](#) (1)

Step 1 — Case



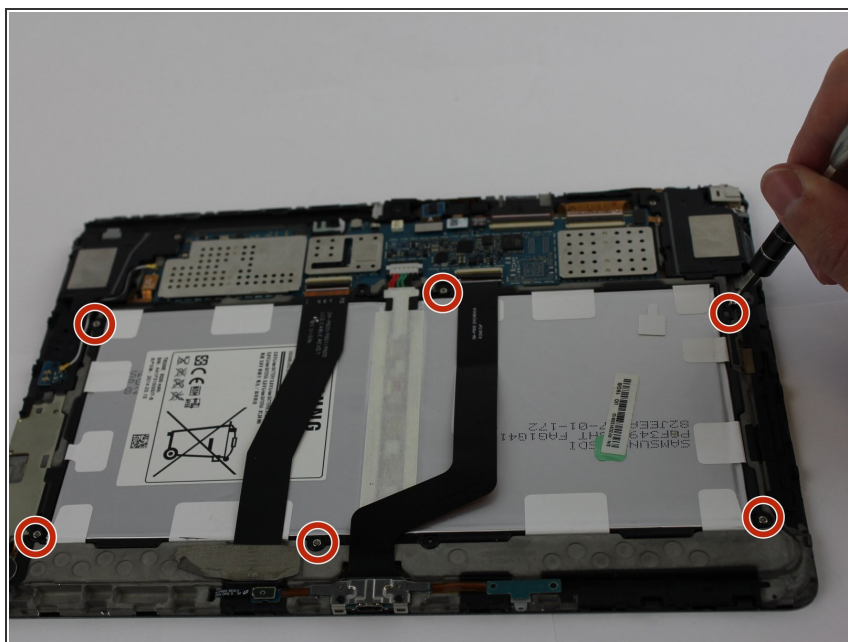
- Using the [nylon spudger](#) or [plastic opening tool](#) along the edges of the screen, separate the back case off of the device.
- ⓘ If possible, consider using the black nylon spudger for a gentler separation.

Step 2 — Battery



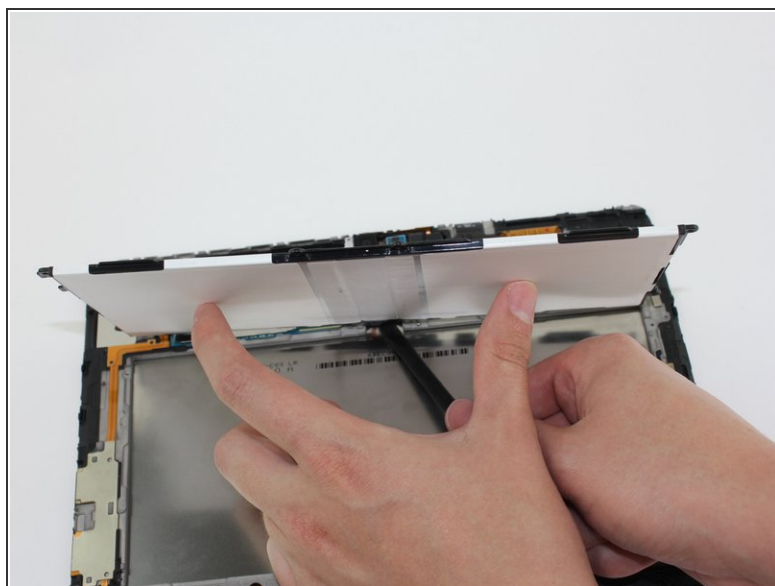
- Place your finger on the thin black bar at the end of the ribbon tape and flip each one up.
- Gently pull the ribbon tape on the battery away from the bar. Repeat this process for the second ribbon tape.

Step 3



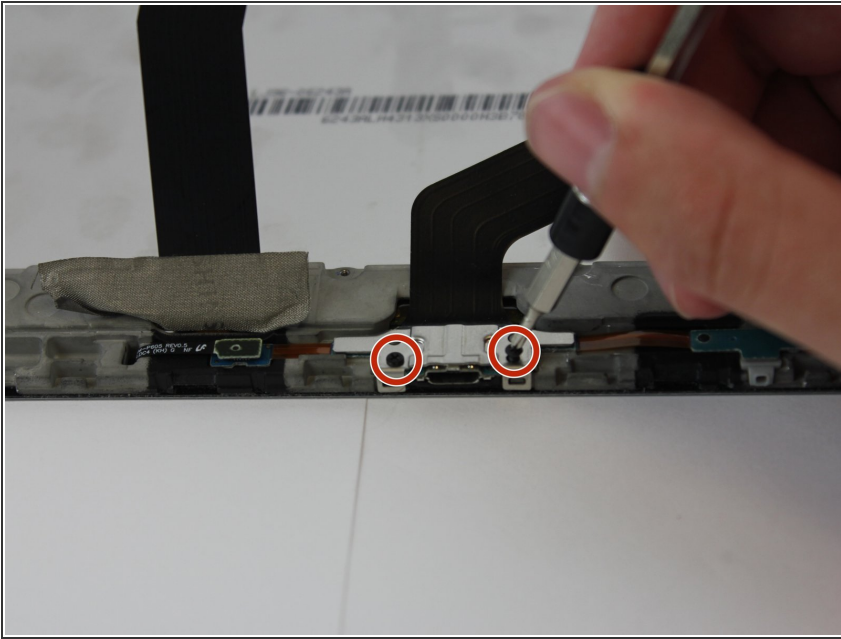
- Remove the six 3mm screws around the battery with the [Phillips PH000 screwdriver](#).

Step 4



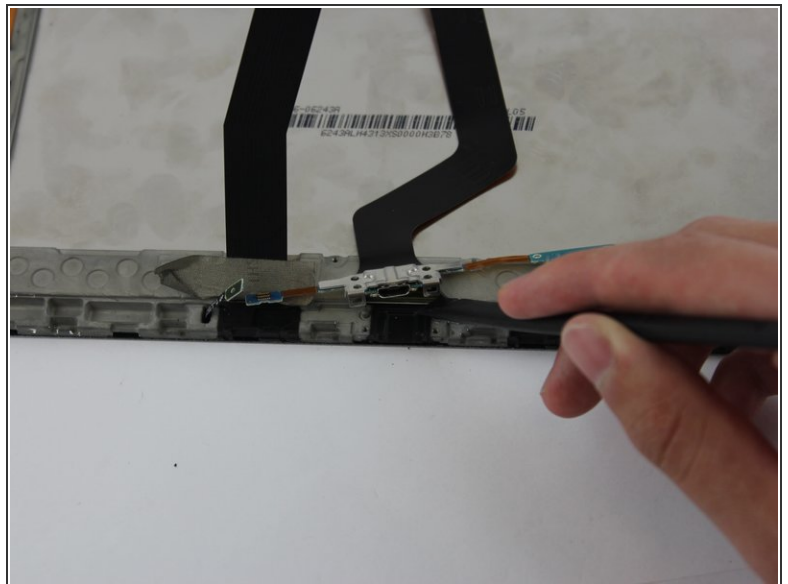
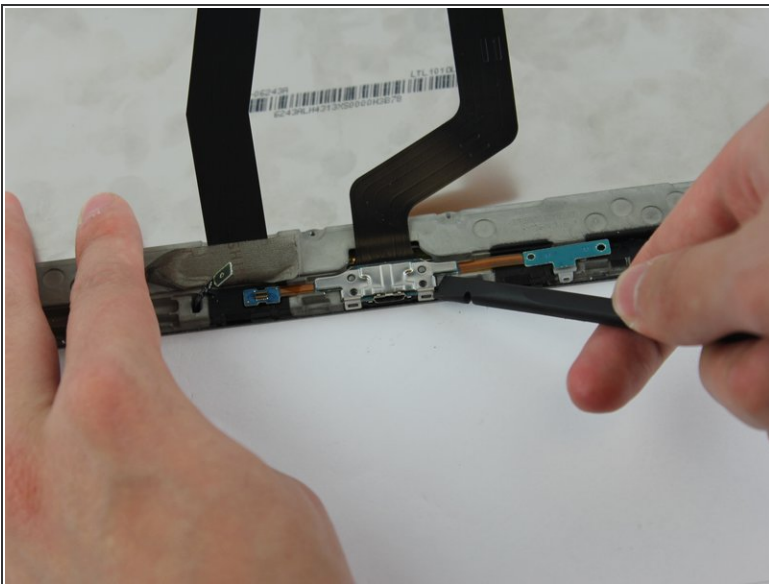
- Lift up the battery from the bottom and situate the [black nylon spudger](#) underneath the battery.
- Use the black nylon spudger to disconnect the multi-colored wires from the rest of the device.

Step 5 — Charging Port



- Using the PH000 screwdriver, remove the two black 3mm screws at the bottom of the device.

Step 6



- After disconnecting the two blue electronic connectors, unhinge the metal part of the charging port with the black nylon spudger.
- ⓘ Make sure to also disconnect the other end of the ribbon as well by pushing back the thin black metal bar.

To reassemble your device, follow these instructions in reverse order.