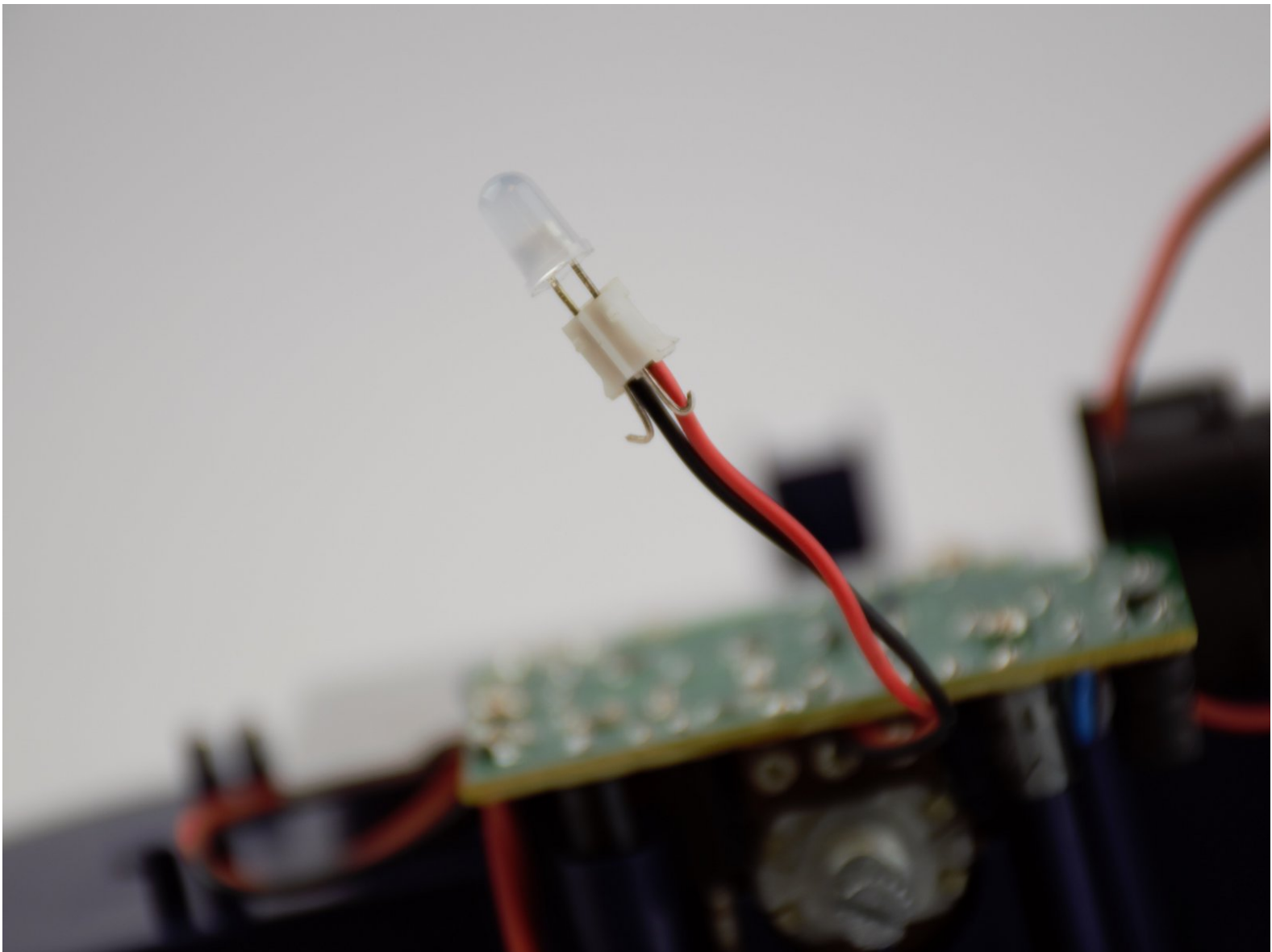




# Emson Star Wars R2-D2 Humidifier LED Replacement

A replacement guide for replacing the LED on the back of the Emson Star Wars R2-D2 Humidifier. The LED indicates whether the humidifier is on or off.

Written By: Mani Jaishanker



## INTRODUCTION

The blue LED indicates whether the device is on or off. If the device is working and the blue LED is not on, the LED may either be faulty or it has poor contact to the wire and/or to the printed circuit board. We will demonstrate the steps on getting to the blue LED from inside the device for replacement. Then, we will replace the blue LED.



### TOOLS:

- [Phillips Head Screwdriver: Size PH1](#) (1)
- [64 Bit Driver Kit](#) (1)



### PARTS:

- [Blue LED](#) (1)

## Step 1 — Blue LED



- Remove the top cover by pulling upwards on R2's head.

## Step 2



- Remove the dial in the front of the device by pulling the dial outwards.

### Step 3



- Remove the water tank by lifting the tank upwards.

## Step 4



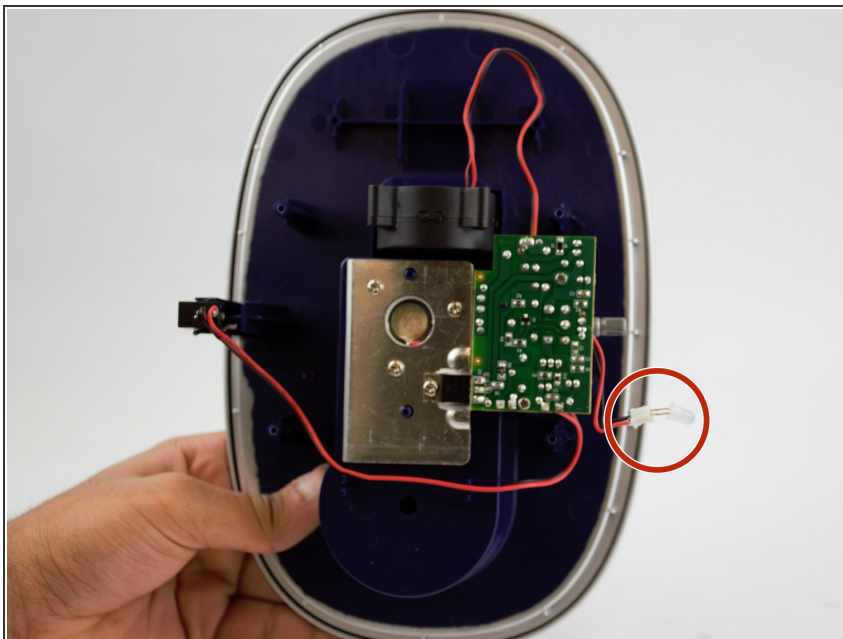
- Lay the bottom part of the device upside down on a table.
  - Locate the four PH1 screw heads on the underside.
  - We used the driver and 150mm driver extension with a PH1 screwdriver bit (from [64 Bit Driver Kit](#)) to elongate the driver. (See note below and second image)
- NOTE:** The PH1 screw heads are located 5cm into the device. Make sure to use a PH1 Driver that is at most 1cm in diameter and at least 5cm in depth.

## Step 5



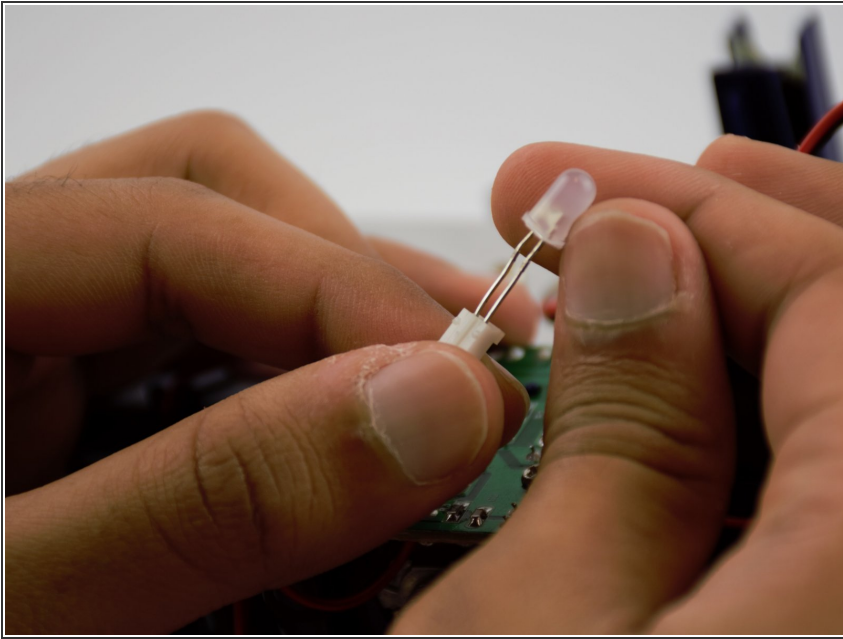
- Remove the blue reservoir cover by pulling up the extended plastic.

## Step 6



- On the underside of the blue top, you should be able to see the LED exposed under the dial.

## Step 7



- To remove the blue LED, carefully pull the LED through the holes on the connector.
- ★ To add the new LED, make sure to connect the longer metal side (positive end) to the red side on the connector (positive end). The shorter end (negative side) should be connected to the black wire (negative side).
- ★ Once the LED is in and to make sure the LED stays connected, bend the metal ends at least 90 degrees to prevent it from sliding out of the connector.

To reassemble your device, follow these instructions in reverse order.