



Mr. Coffee DRX5 Warming Plate Replacement

This guide will show you how to replace the part of the coffee machine that keeps the coffee pot warm.

Written By: Michael Chhim



TOOLS:

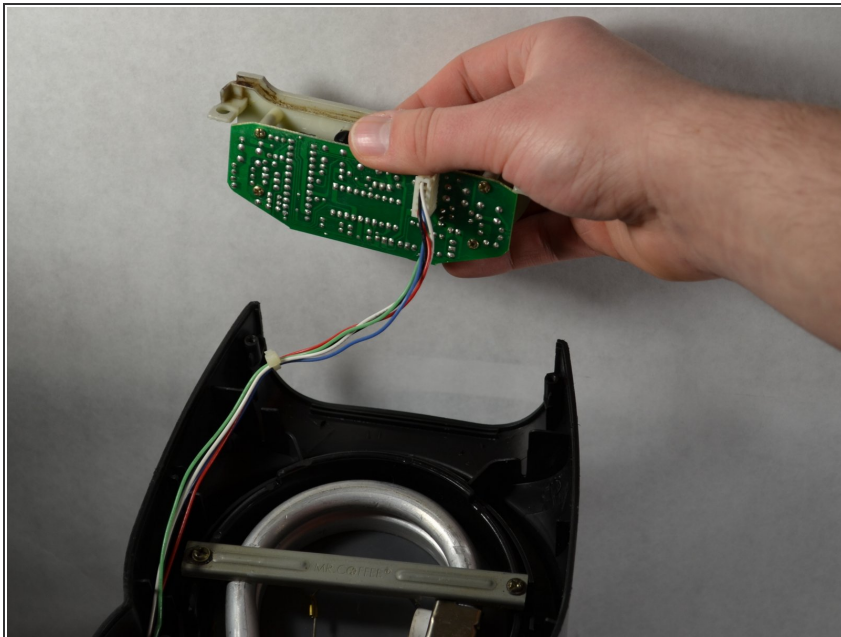
- [Phillips #1 Screwdriver](#) (1)
 - [iFixit Opening Tools](#) (1)
-

Step 1 — Warming Plate



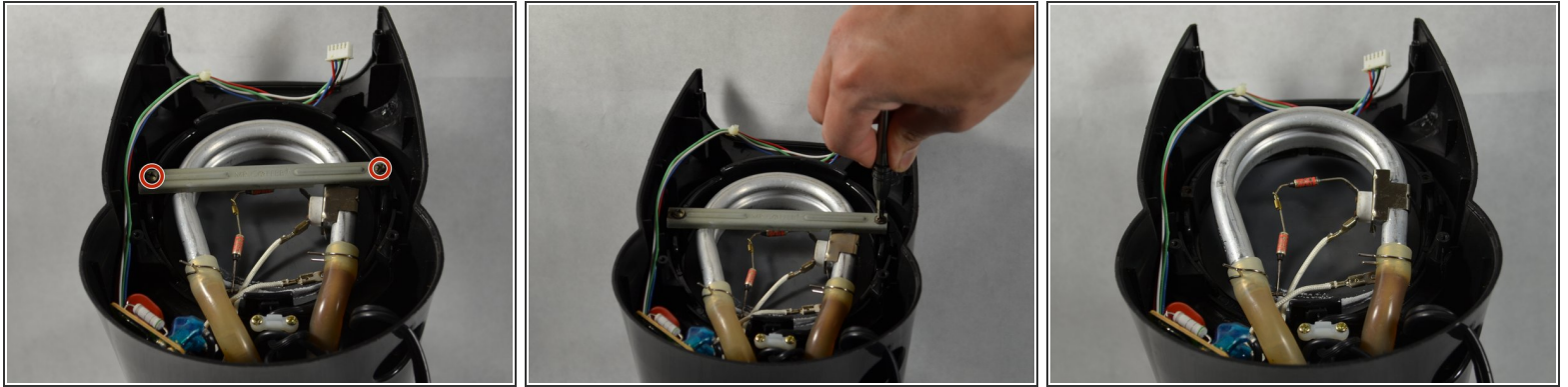
- Use a Phillips #1 screwdriver to remove the two 9mm screws and the three 11mm screws on the bottom of the coffee maker and remove the bottom plastic cover.

Step 2



- Slide display out of the way.

Step 3



- Using a Phillips #1 screwdriver, remove 12mm screws from heating element bracket and remove bracket.

Step 4



- Pull heating element out of the way.

Step 5



- Twist warming plate clockwise so that the tab is out of place. Remove warming plate.

To reassemble your device, follow these instructions in reverse order.