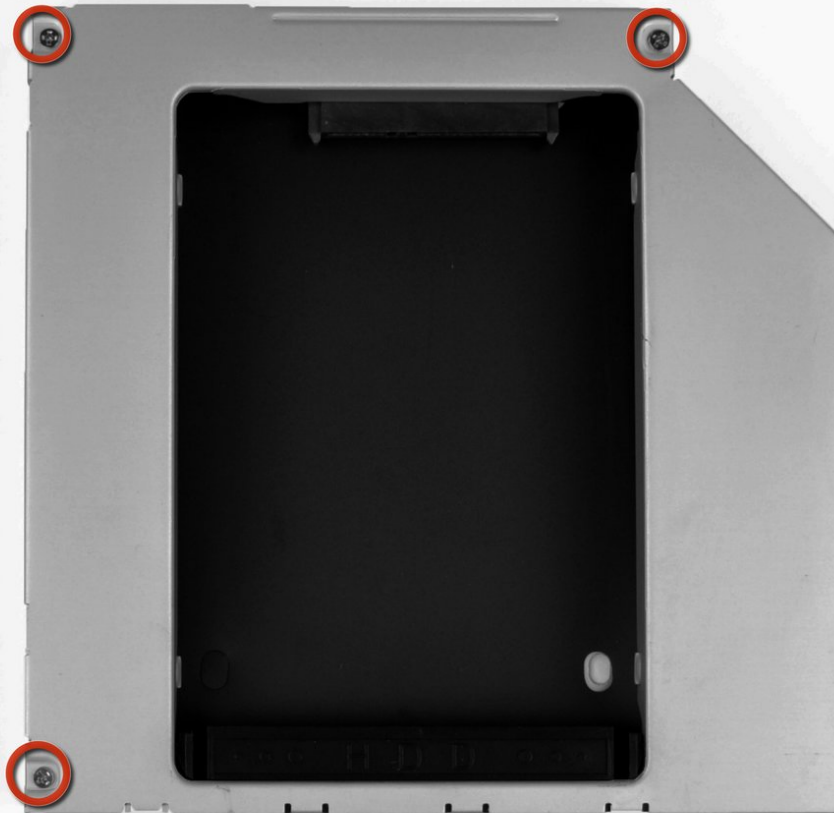




# Optical Drive Enclosure Faceplate

Written By: Brittany McCrigler



---

## INTRODUCTION

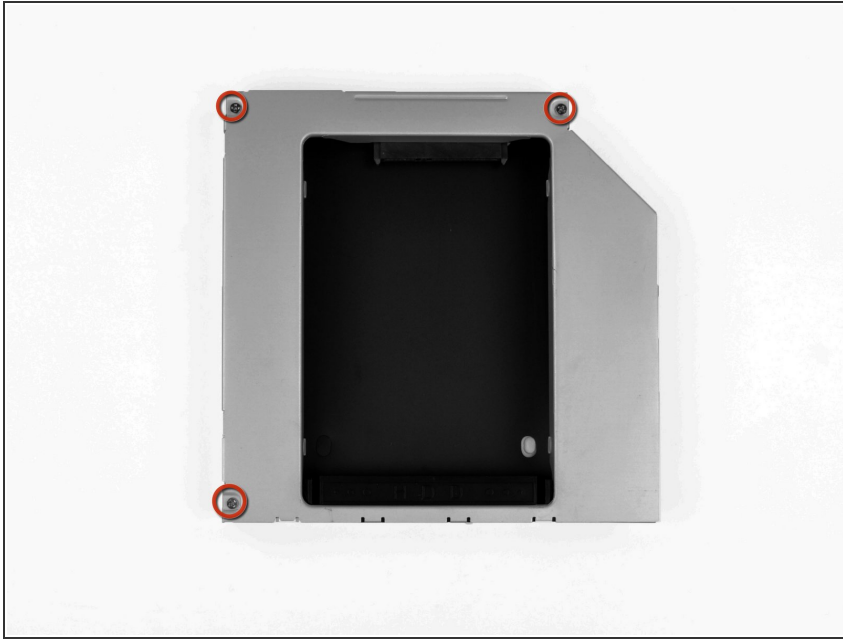
Pre-req for removing the faceplate from Optical Bay Enclosures #78, 79, 80

---

### TOOLS:

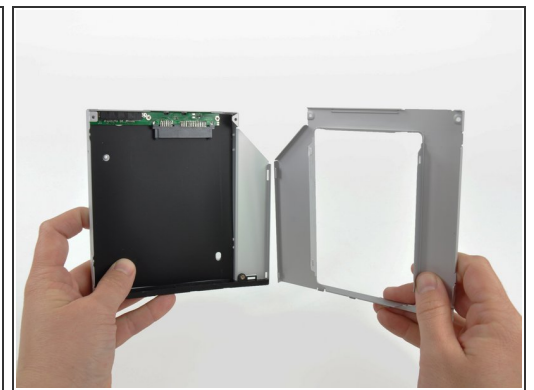
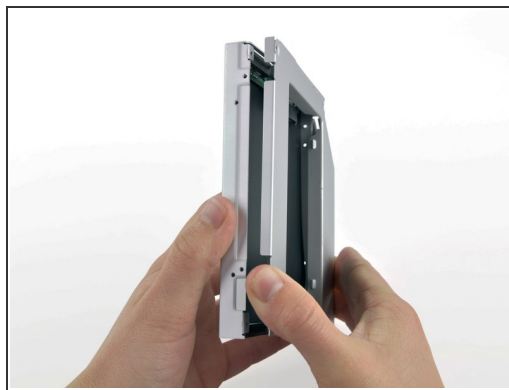
- [Phillips #0 Screwdriver](#) (1)
-

## Step 1 — Optical Drive Enclosure Faceplate



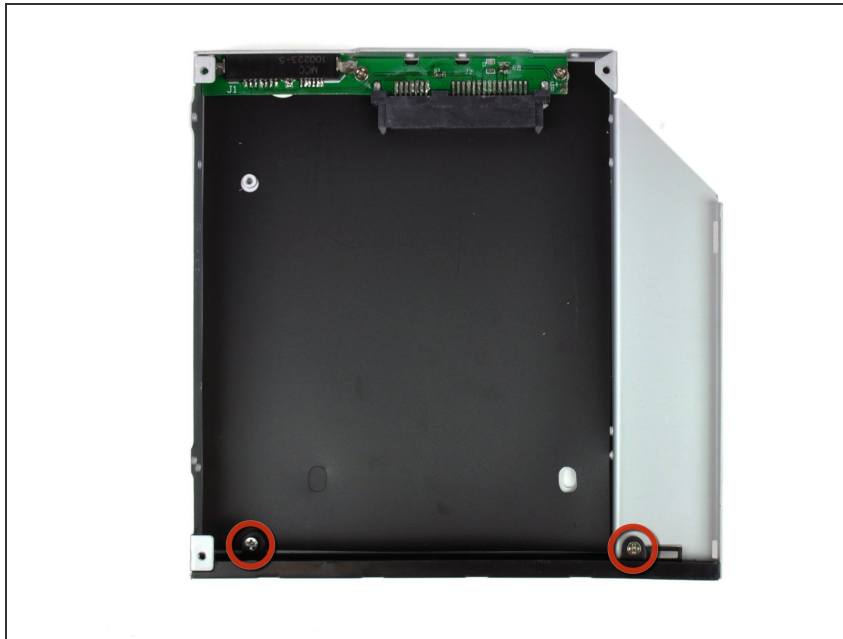
- Remove the three 3.0 mm Phillips #0 screws from the optical bay enclosure.

## Step 2



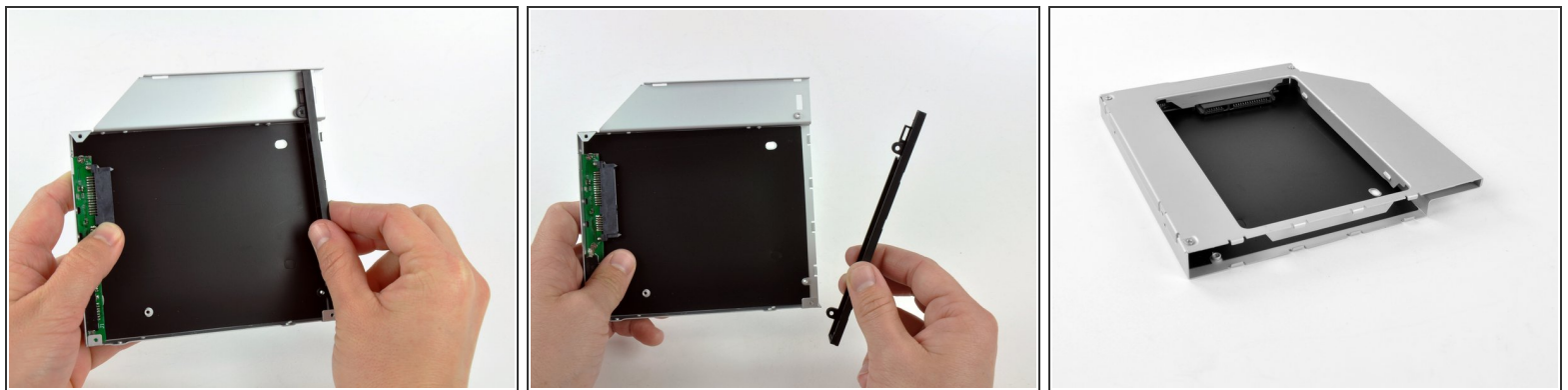
- Starting from the left edge, gently pull open the optical bay enclosure.
- Continue to pull open the two halves of the enclosure until they separate.

### Step 3



- Remove the two 3.0 mm Phillips #0 screws securing the faceplate to the optical bay enclosure.

### Step 4



- Lift the black plastic faceplate out of the optical bay enclosure.
  - ⓘ You will no longer need the faceplate or the two Phillips screws that held it in place. Set those parts aside if you ever wish to put the faceplate back into the enclosure.
- Reassemble the optical bay enclosure without the faceplate, reusing the original three 3.0 mm Phillips screws to keep it intact.

To reassemble your device, follow these instructions in reverse order.

