



Dell XPS 13 L321X Wireless Card Replacement

How to replace the wireless card. It is recommended to check troubleshooting before replacing the wireless card.

Written By: Molly Skinner



INTRODUCTION

WIFI not working or slow? Replace it (only screwdrivers required).

TOOLS:

- [T4 Torx Screwdriver](#) (1)
 - [Phillips #00 Screwdriver](#) (1)
 - [iFixit Opening Tools](#) (1)
-

Step 1 — Wireless Card



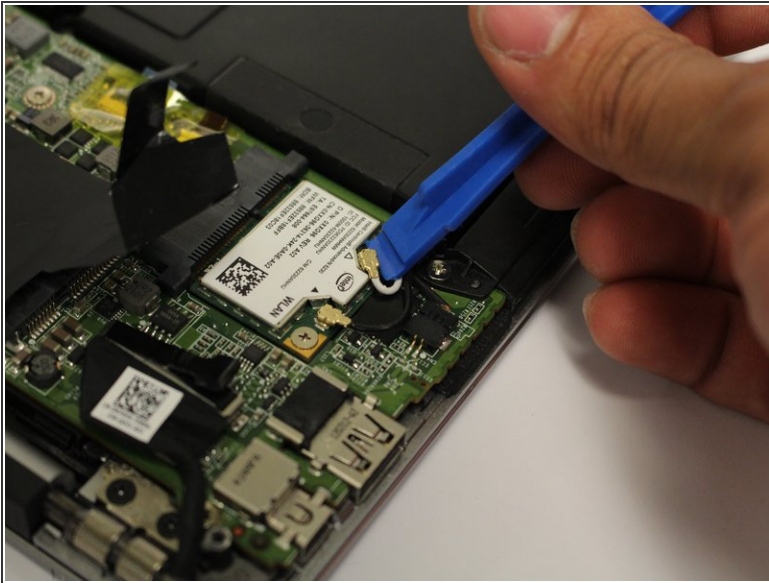
- Remove ten 3mm screws from the back cover with a T4 screwdriver.

Step 2



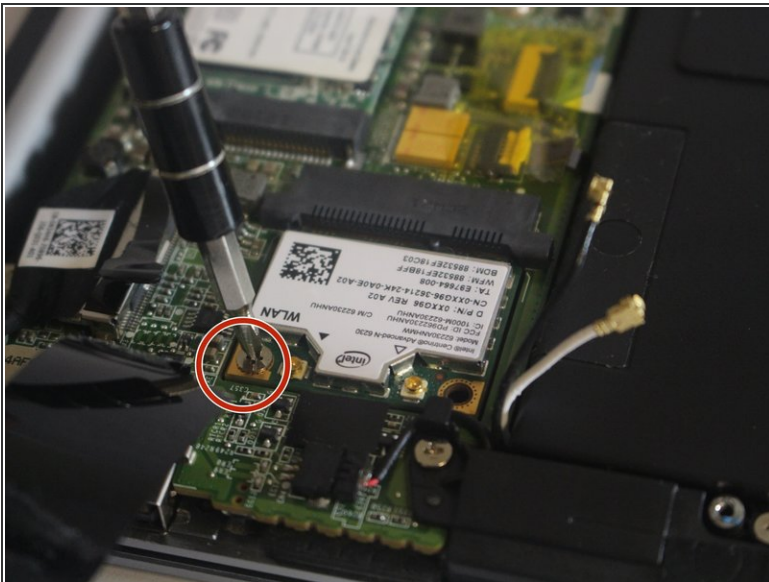
- Remove the black tape covering the RAM and wireless card with your hands.

Step 3



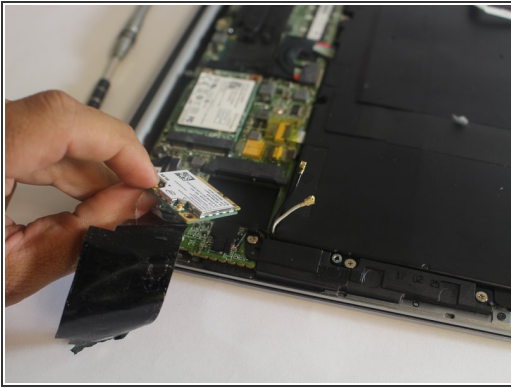
- Use a plastic iFixit opening tool to remove the two wires connected to the wireless card.

Step 4



- Use a **PH00** screwdriver to remove the one 3mm screw that holds the wireless card in place.

Step 5



- Use your hand to remove the wireless card.