



# iMac G5 20" Model A1076 Rear Panel Replacement

Written By: Walter Galan



## INTRODUCTION

Remove the rear panel to gain access to the innards of your iMac.

---

### TOOLS:

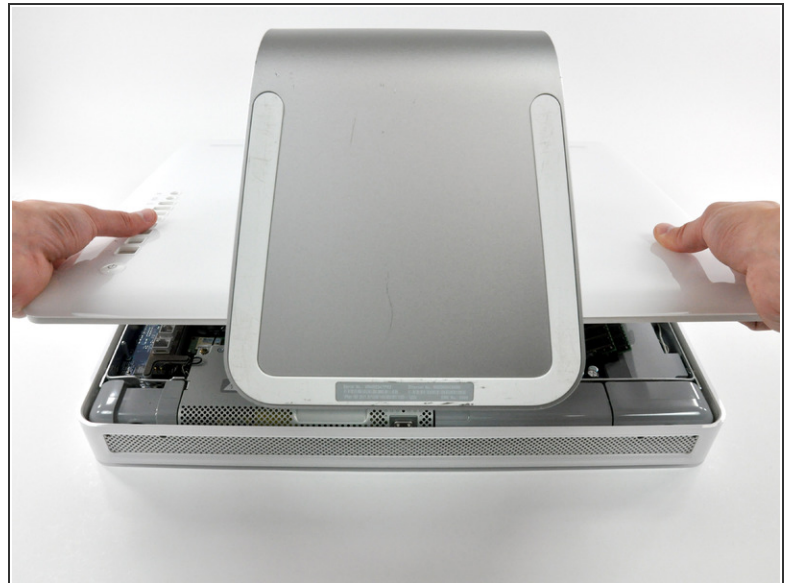
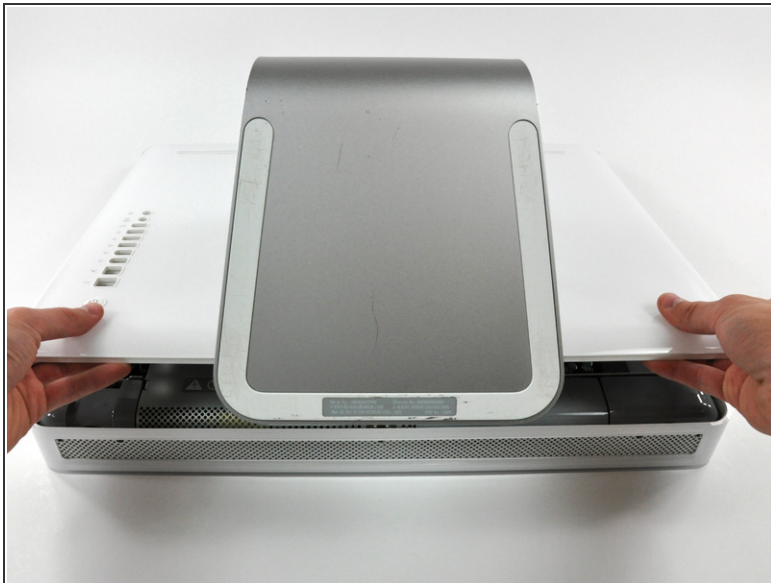
- [Phillips #1 Screwdriver](#) (1)
-

## Step 1 — Rear Panel



- Lay the iMac display-side down on a flat surface.
  - Loosen the three Phillips screws securing the rear panel to the iMac.
- ⚠ These screws are captive in the iMac. The center screw will stop turning after about 3.5 turns and the outer screws will stop turning after about 5.5 turns. Do not try to remove these screws from your iMac.

## Step 2



- Lift the rear panel slightly near the bottom of the iMac.
- Pull the rear panel toward yourself and remove it from the iMac.

To reassemble your device, follow these instructions in reverse order.

